

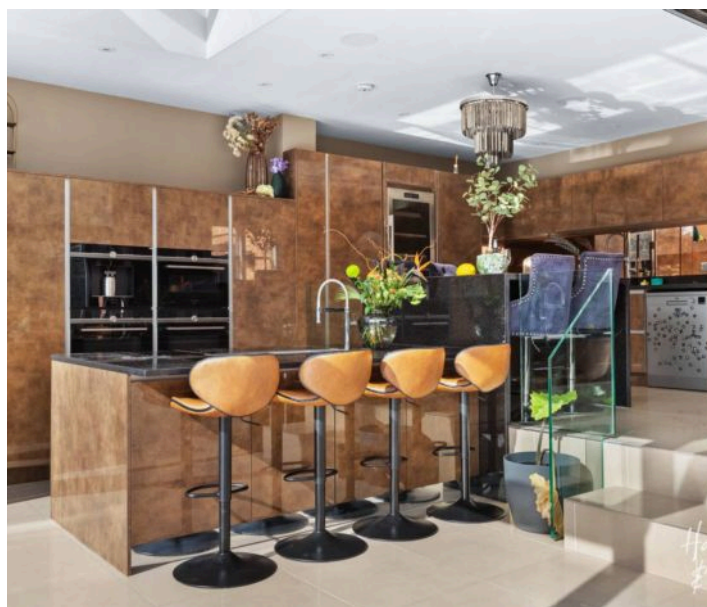
The Spinney

Epping Upland, Epping

Council Tax band: G

Tenure: Freehold

- Beautiful four bedroom family home
- Surrounded by Essex countryside views
- Two ensuite shower rooms
- Walk-in dressing room to primary bedroom
- External detached summer house and office
- Gated driveway and garage
- Short drive to Epping underground station



Kitchen

22' 7" x 15' 9" (6.89m x 4.80m)

Living Room

19' 11" x 13' 0" (6.08m x 3.97m)

Family Room

22' 5" x 15' 0" (6.84m x 4.57m)

Cloakroom

Dining Area and Bar

Office

17' 4" x 9' 9" (5.28m x 2.98m)

Additional WC

Bedroom 1

10' 5" x 15' 2" (3.17m x 4.63m)

Dressing area

Ensuite Shower Room

Bedroom 2

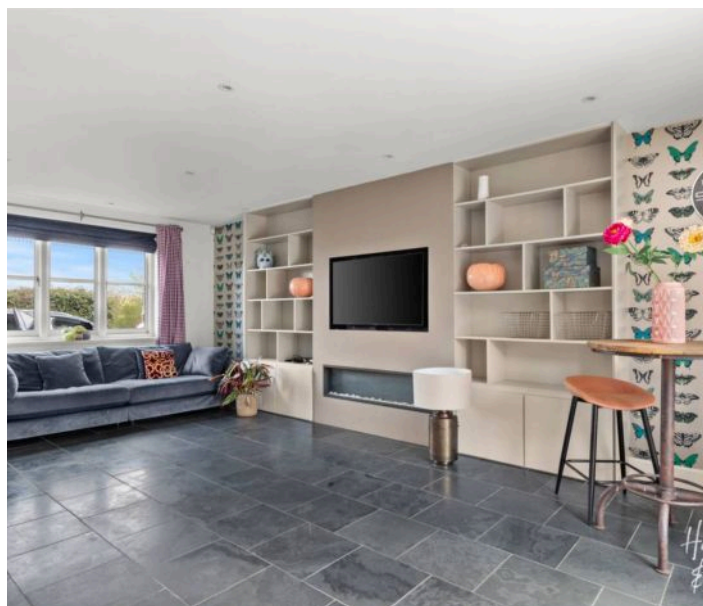
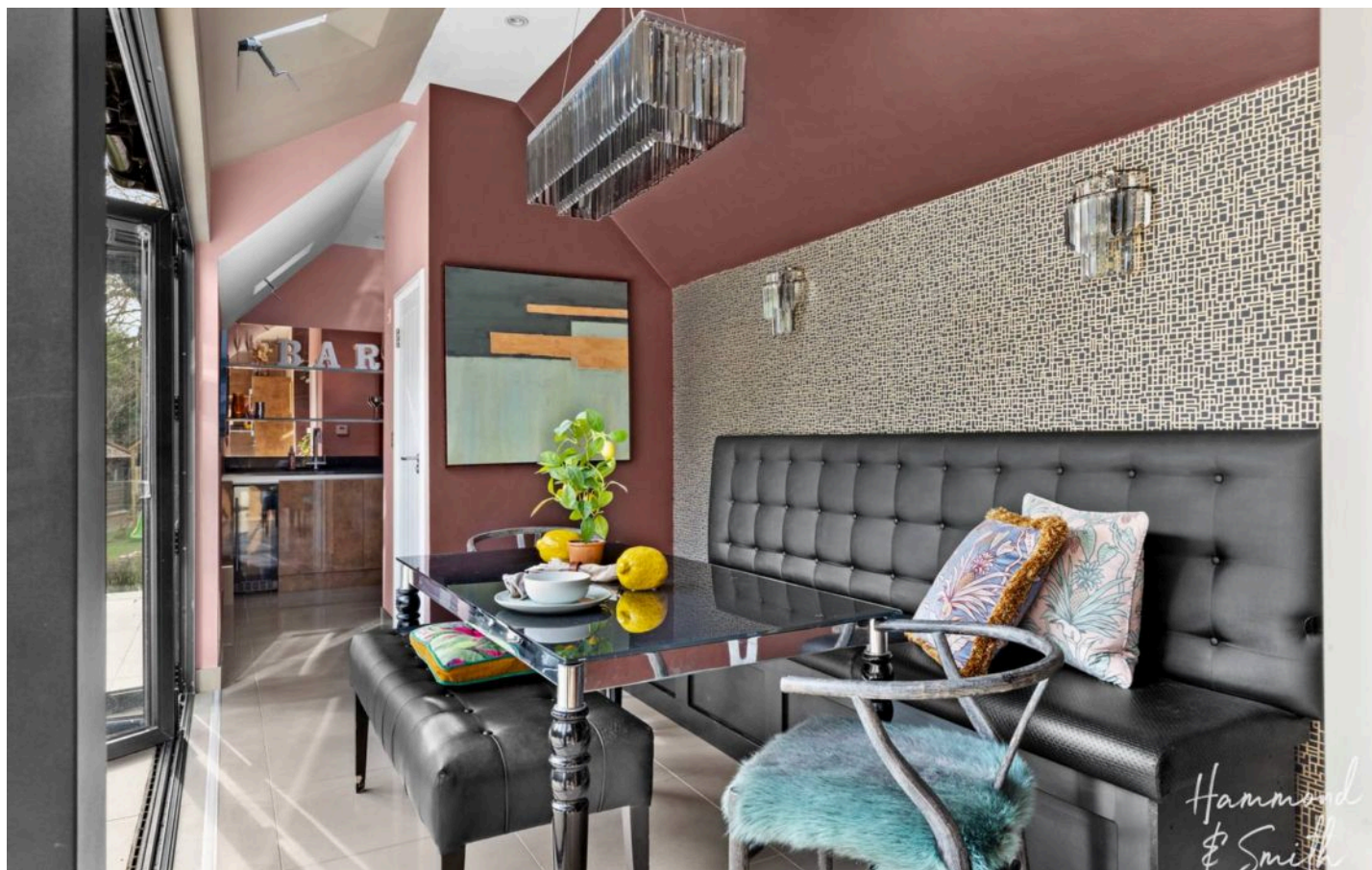
18' 8" x 12' 4" (5.68m x 3.77m)

Ensuite Shower Room

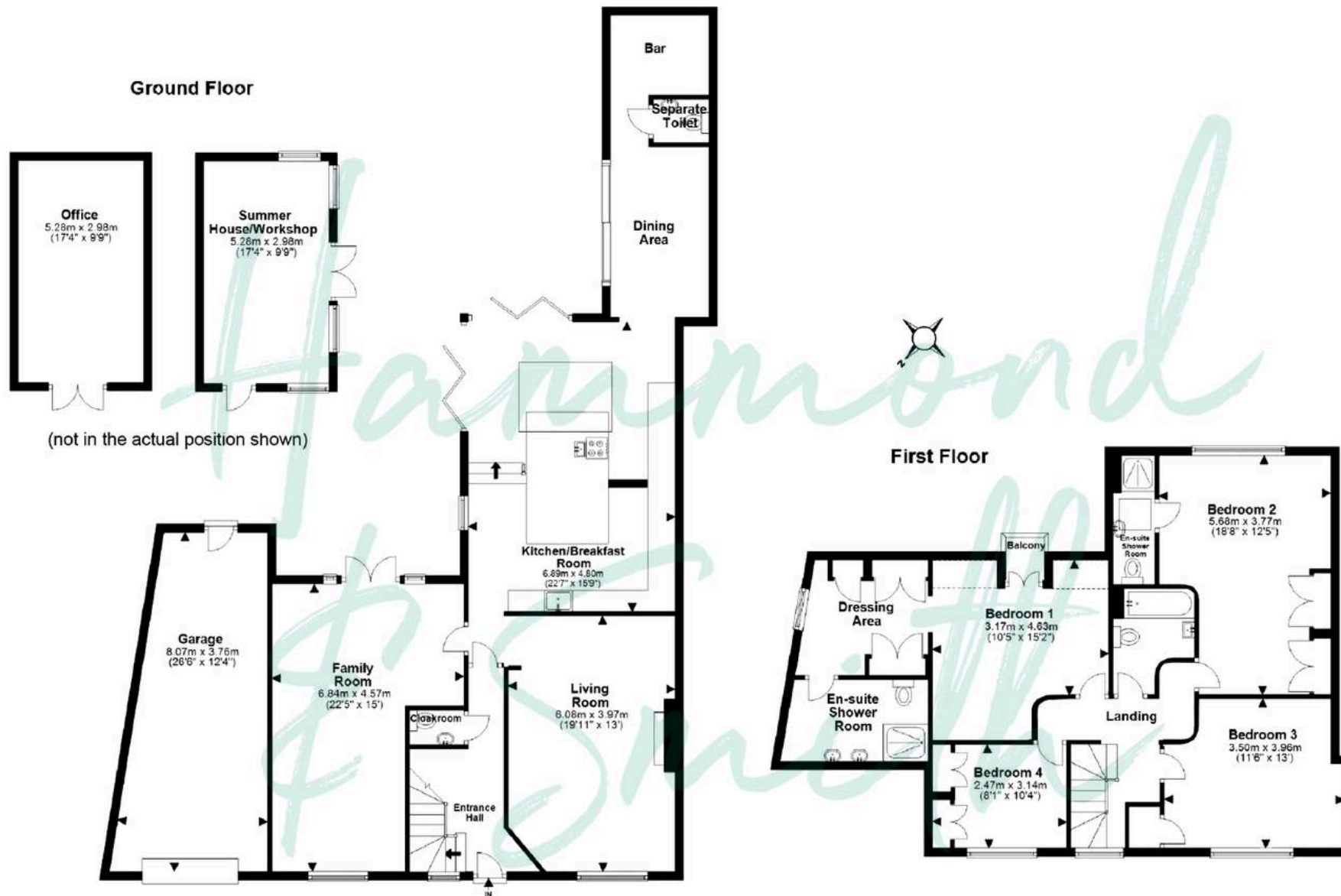
Bedroom 3

11' 6" x 13' 0" (3.50m x 3.96m)

Bathroom







Total area: approx. 259.6 sq. metres (2794.2 sq. feet)

THE FLOORPLAN IS FOR ILLUSTRATIVE PURPOSES ONLY AND IS NOT TO SCALE. Measurements and features are approximate and may differ from the actual property. Verify all details independently; no liability is accepted for errors or omissions.