



Blenheim Square, North Weald

In Excess of £310,000





68 Blenheim Square

North Weald, Epping

Council Tax band: C

Tenure: Leasehold

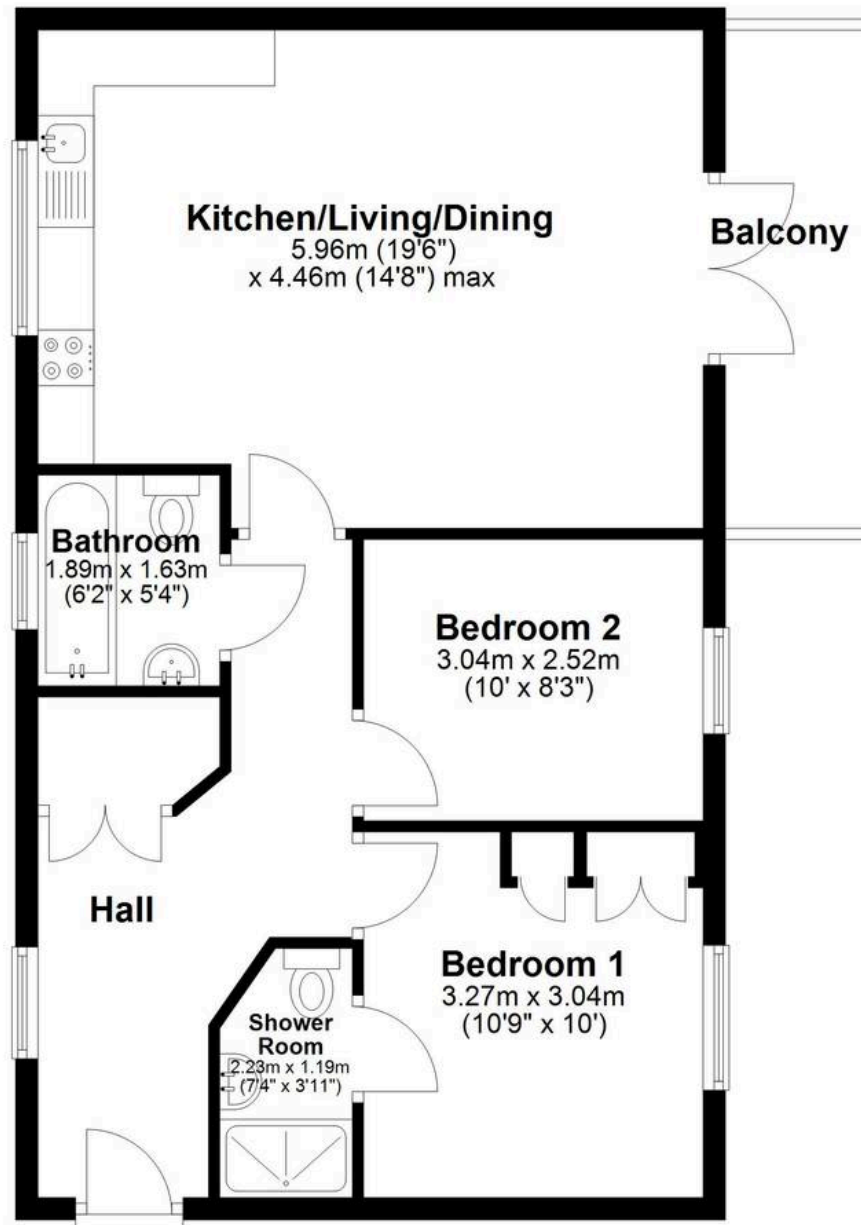
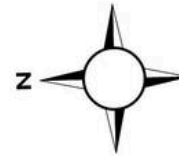
- Ground floor apartment with allocated parking
- Two double bedrooms
- En-suite shower room
- Balcony terrace
- Short drive to the M11 and Epping's underground station
- Village location





Ground Floor

Approx. 62.0 sq. metres (667.7 sq. feet)



Total area: approx. 62.0 sq. metres (667.7 sq. feet)