

# 40 Lindsey Street

Epping, Epping

Council Tax band: D

Tenure: Freehold

- OFF ROAD PARKING
- PERIOD PROPERTY
- CHAIN FREE
- LOFT ROOM
- IDEAL FIRST TIME BUY
- LARGE RECEPTION ROOM





**Porch**

**Reception**

26' 11" x 10' 11" (8.21m x 3.32m)

**Kitchen**

11' 2" x 10' 11" (3.40m x 3.32m)

**Landing**

**Bedroom**

11' 8" x 10' 7" (3.55m x 3.22m)

**Bedroom**

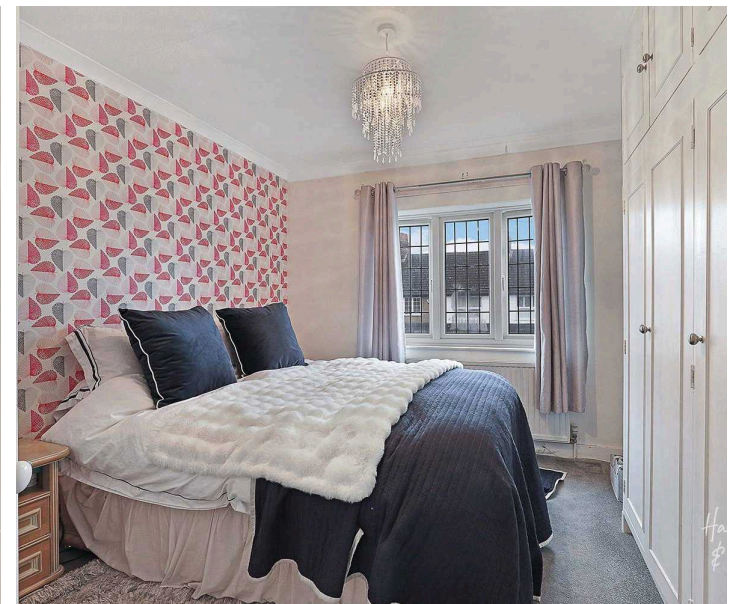
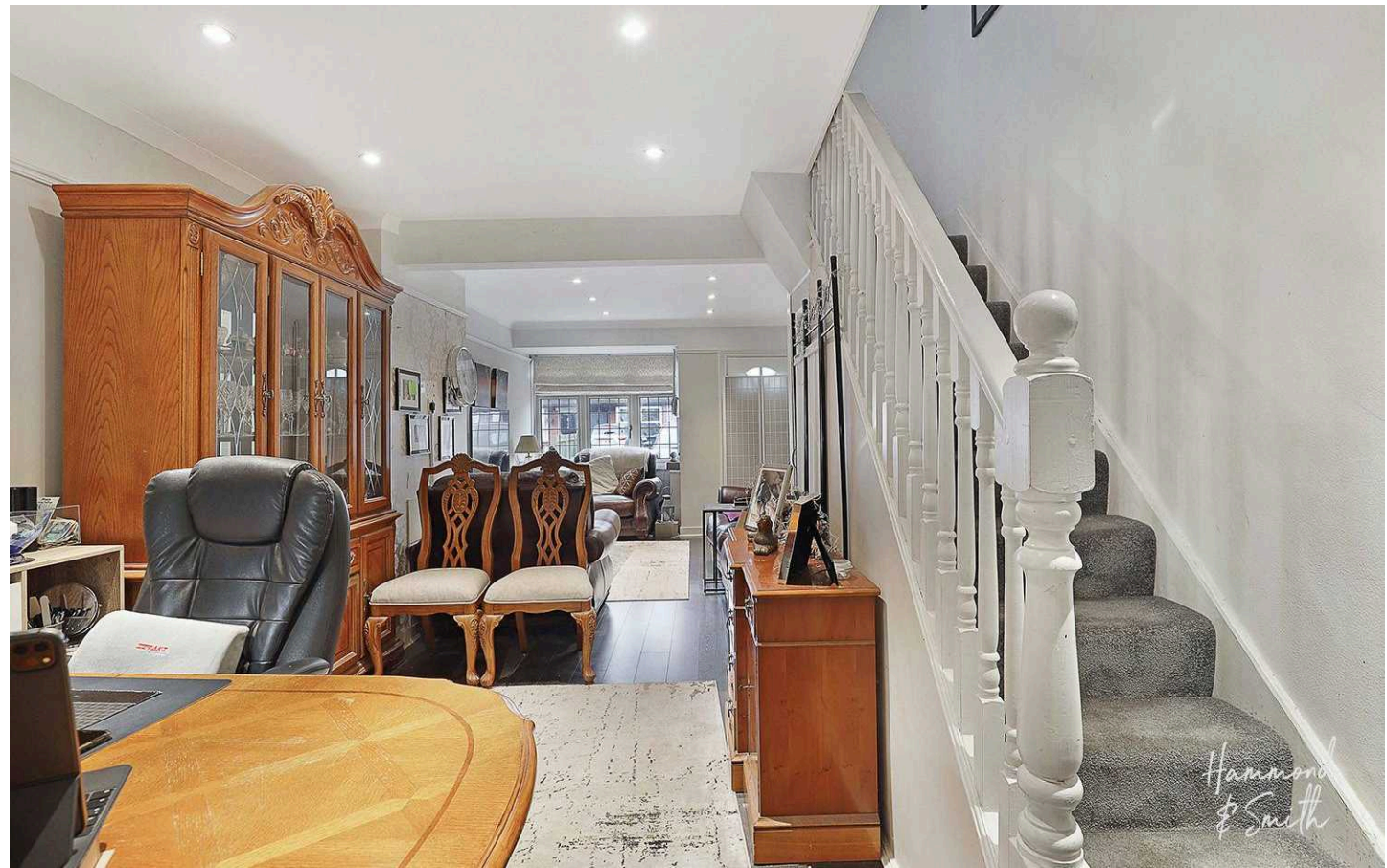
12' 6" x 5' 7" (3.80m x 1.71m)

**Bathroom**

10' 1" x 6' 8" (3.08m x 2.02m)

**Loft Room**

14' 7" x 10' 11" (4.44m x 3.32m)









### Ground Floor

Approx. 37.8 sq. metres (406.8 sq. feet)



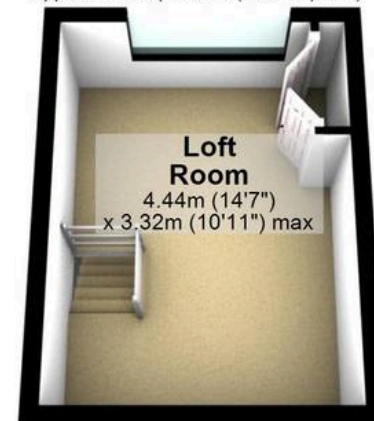
### First Floor

Approx. 31.2 sq. metres (335.7 sq. feet)



### Second Floor

Approx. 14.8 sq. metres (159.0 sq. feet)



Total area: approx. 83.8 sq. metres (901.5 sq. feet)