

11 Brook Road

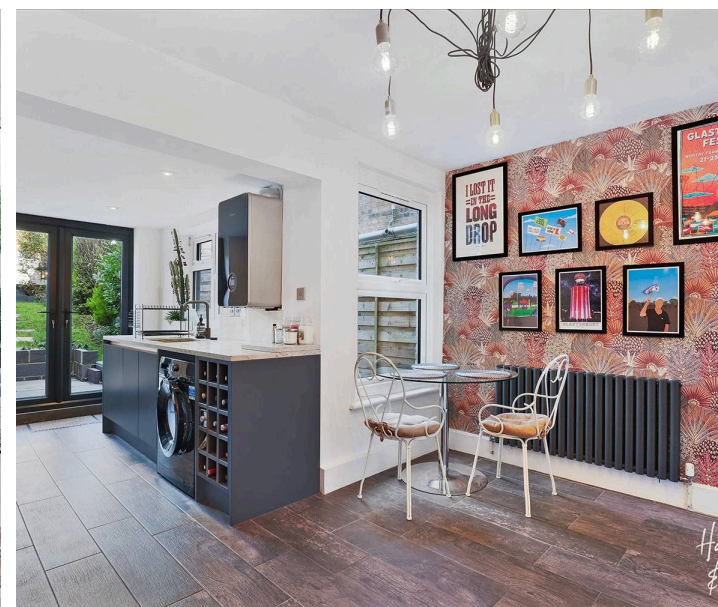
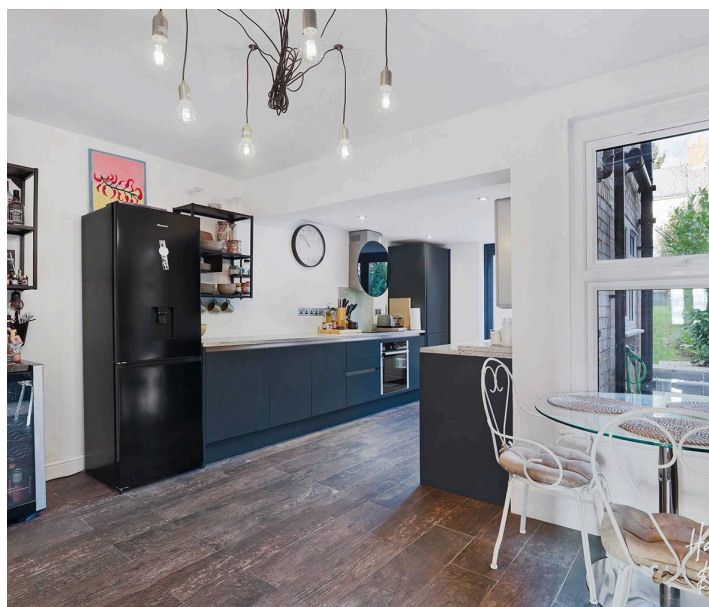
Epping, Epping

Welcome to Brook Road. A chain free two bedroom period home filled with colour, light and space.

Council Tax band: C

Tenure: Freehold

- CHAIN FREE
- CHARACTER PROPERTY
- TWO DOUBLE BEDROOMS
- WALKING DISTANCE TO STATION/HIGH STREET
- MODERN KITCHEN
- GAS CENTRAL HEATING



Hammond
& Smith

Front Door

Lounge

13' 3" x 13' 2" (4.04m x 4.01m)

Kitchen/Diner

19' 0" x 13' 2" (5.79m x 4.01m)

Stairs Leading To

Bedroom One

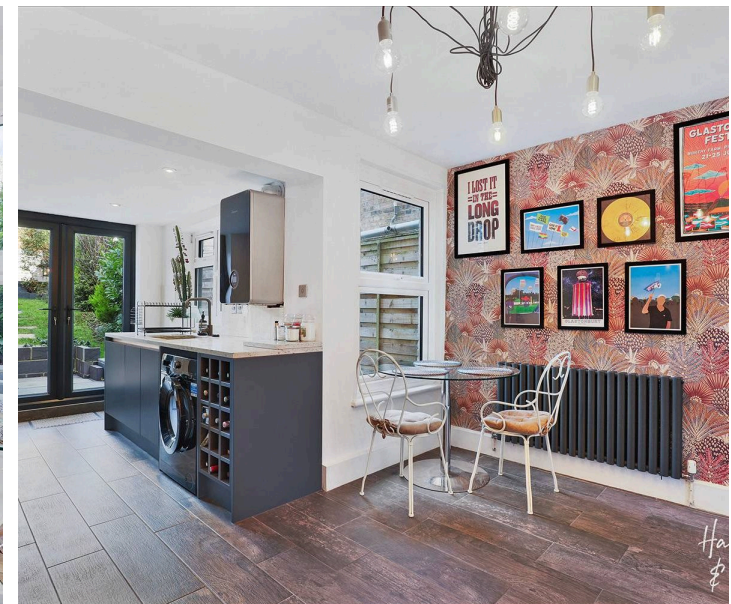
13' 2" x 12' 8" (4.01m x 3.86m)

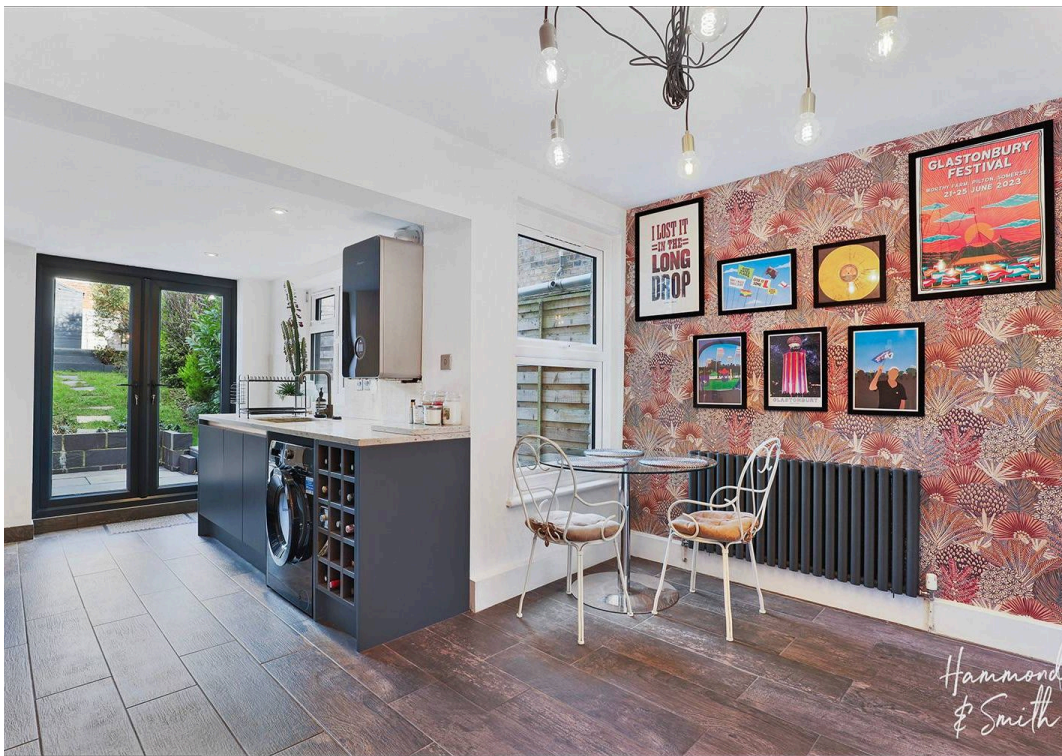
Bedroom Two

11' 6" x 10' 1" (3.51m x 3.07m)

Family Bathroom

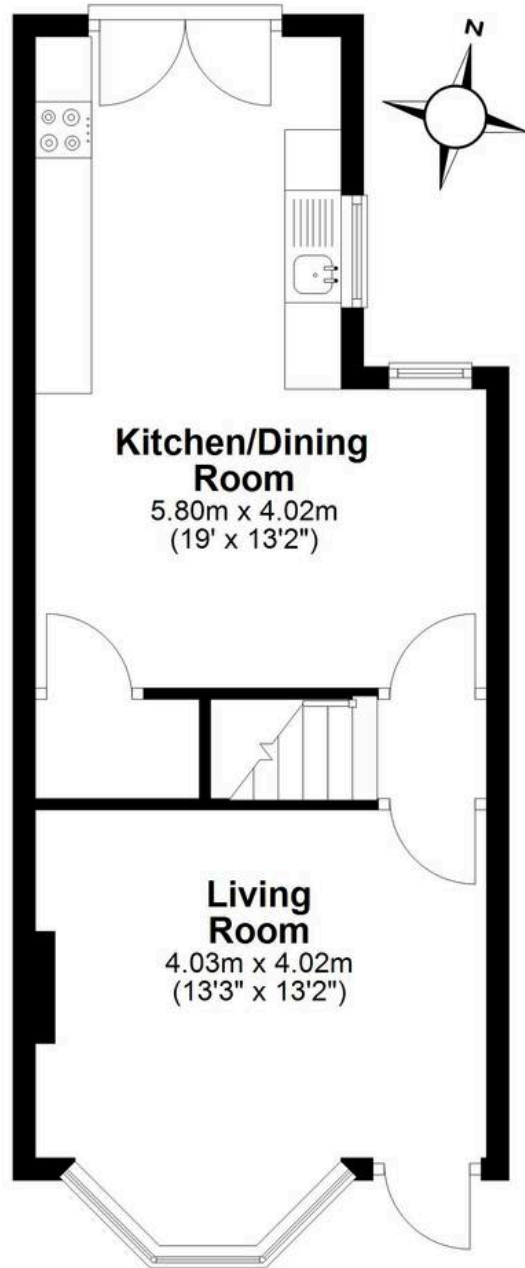
9' 5" x 8' 11" (2.87m x 2.72m)





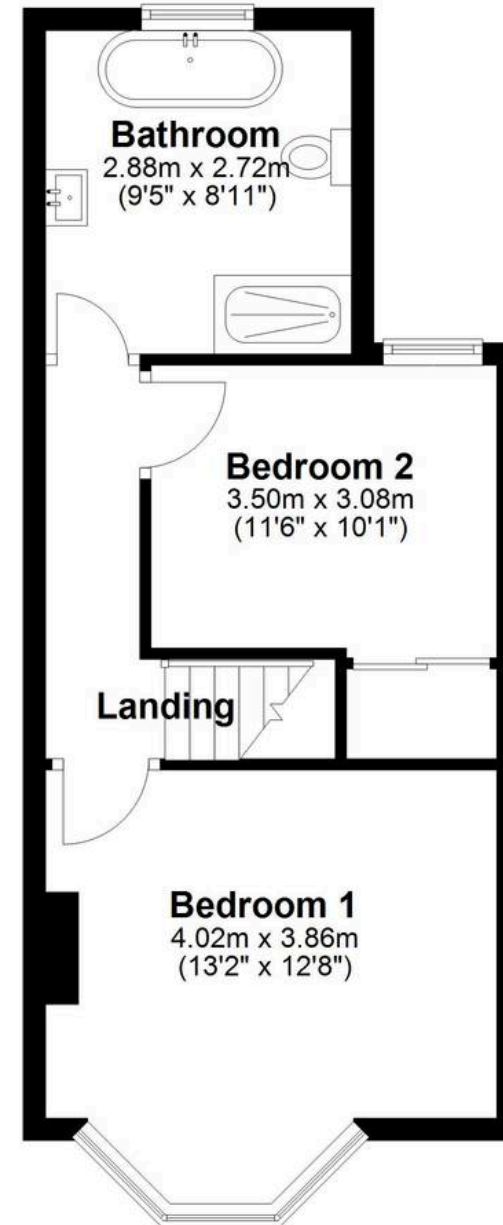
Ground Floor

Approx. 36.3 sq. metres (391.2 sq. feet)



First Floor

Approx. 35.4 sq. metres (380.6 sq. feet)



Total area: approx. 71.7 sq. metres (771.8 sq. feet)