

# Flat 3

Inchcape Allnutts Road, Epping

Council Tax band: B

Tenure: Share of Freehold

- One bedroom first floor apartment
- Share of freehold
- Allocated parking
- Walking distance to Epping station and high street
- Spacious lounge / diner





**Kitchen**

8' 11" x 8' 0" (2.73m x 2.44m)

**Lounge / Diner**

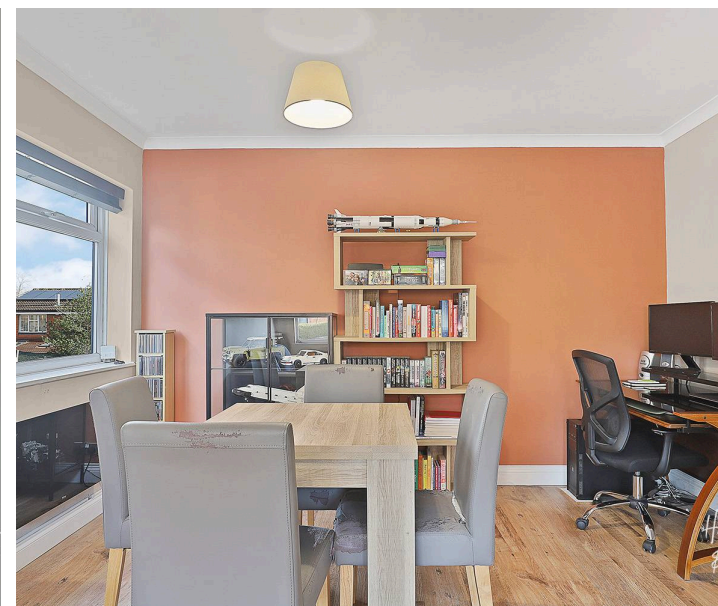
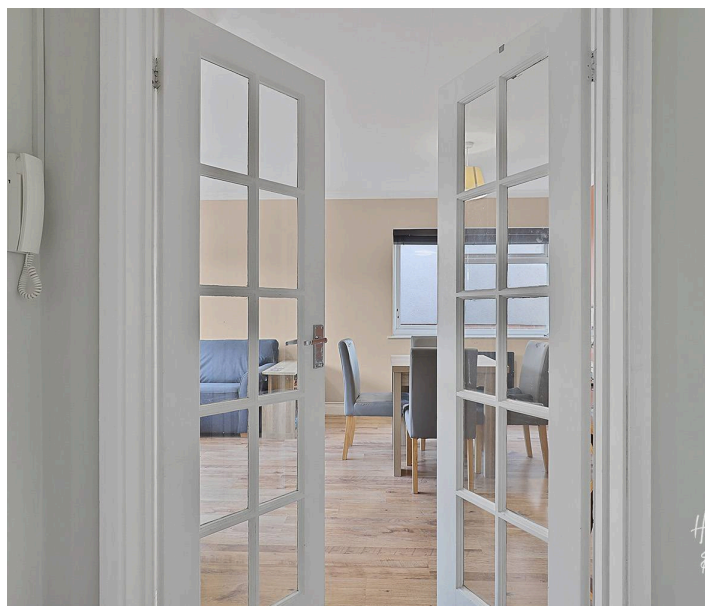
17' 10" x 12' 2" (5.44m x 3.70m)

**Bedroom**

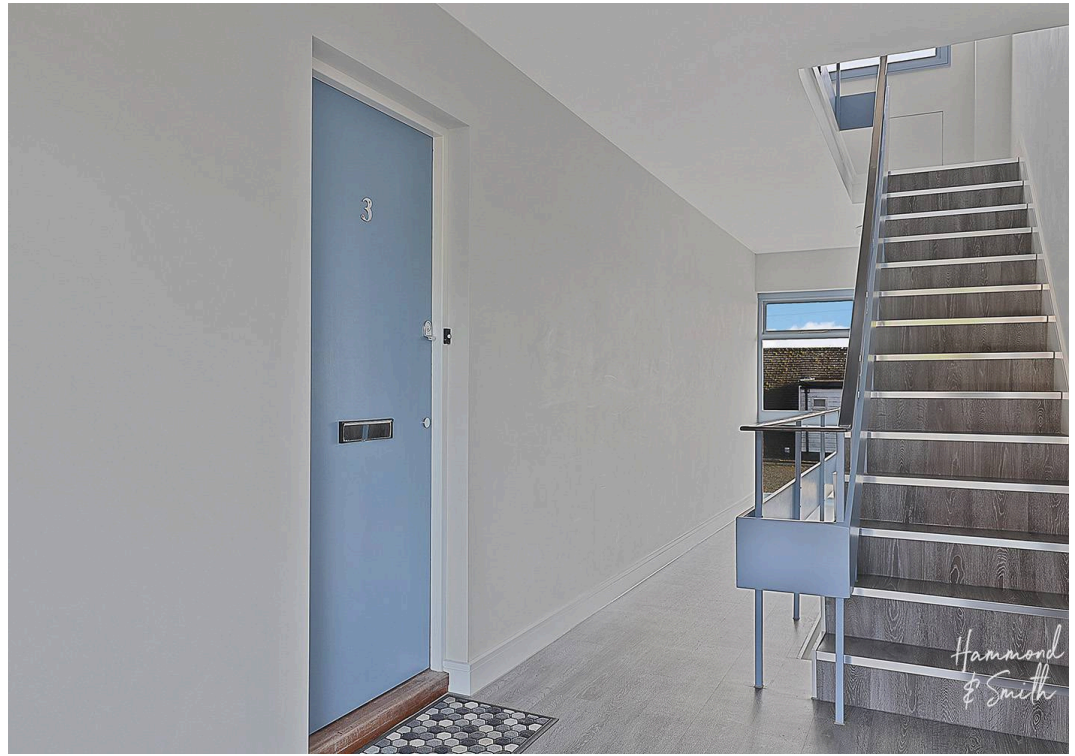
12' 2" x 11' 0" (3.70m x 3.36m)

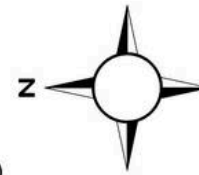
**Bathroom**

7' 10" x 6' 8" (2.40m x 2.03m)



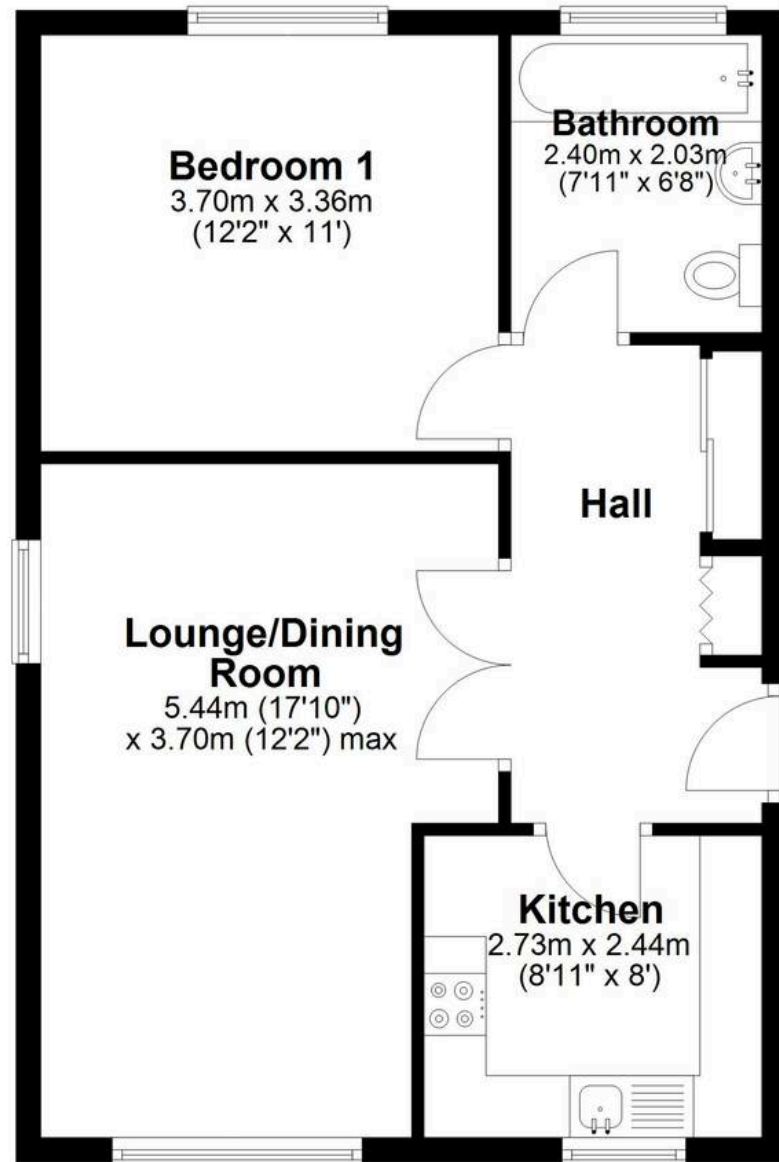






## First Floor

Approx. 51.9 sq. metres (558.8 sq. feet)



Total area: approx. 51.9 sq. metres (558.8 sq. feet)