

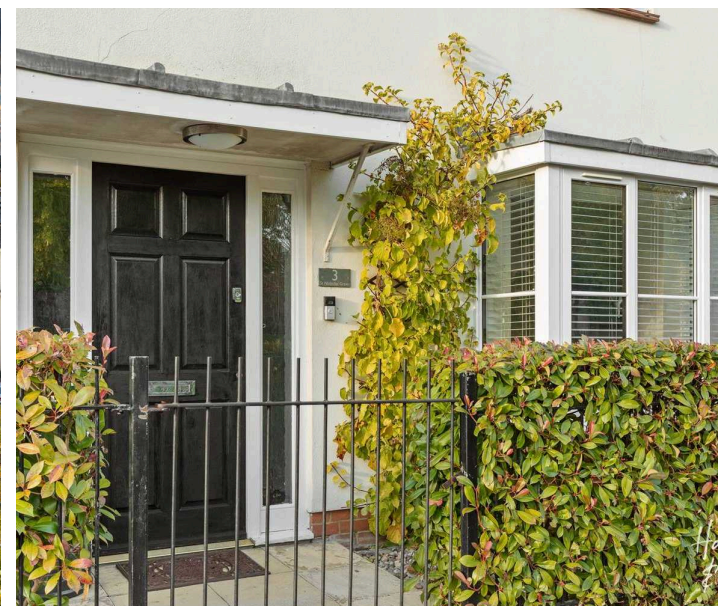
# 3 St. Nicholas Green

Newhall, Harlow

Council Tax band: G

Tenure: Freehold

- FIVE/SIX BEDROOM DETACHED FAMILY HOME
- TWO ENSUITE BEDROOMS
- UTILITY ROOM
- OFF ROAD PARKING FOR 4 CARS
- DETACHED DOUBLE GARAGE
- LANDSCAPED REAR GARDEN WITH SIDE ACCESS
- SHORT DRIVE TO GOOD COMMUTER LINKS



**Hall**

**Kitchen/Dining Room**

25' 8" x 10' 7" (7.82m x 3.23m)

**Living Room**

21' 5" x 11' 6" (6.53m x 3.50m)

**Utility**

5' 8" x 6' 9" (1.73m x 2.06m)

**WC**

**First Floor**

**Bedroom**

15' 6" x 10' 7" (4.73m x 3.23m)

**En-suite Shower Bathroom**

**Bedroom**

12' 8" x 11' 6" (3.85m x 3.50m)

**En-suite**

**Bedroom**

8' 6" x 8' 10" (2.58m x 2.70m)

**Dressing Room**

**Top Floor**

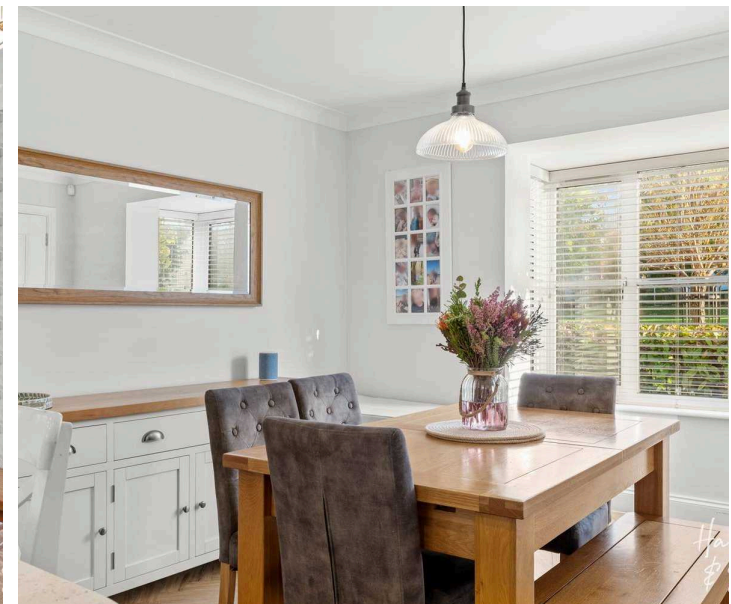
**Bedroom**

17' 8" x 11' 6" (5.38m x 3.51m)

**Bedroom**

11' 9" x 10' 7" (3.58m x 3.23m)

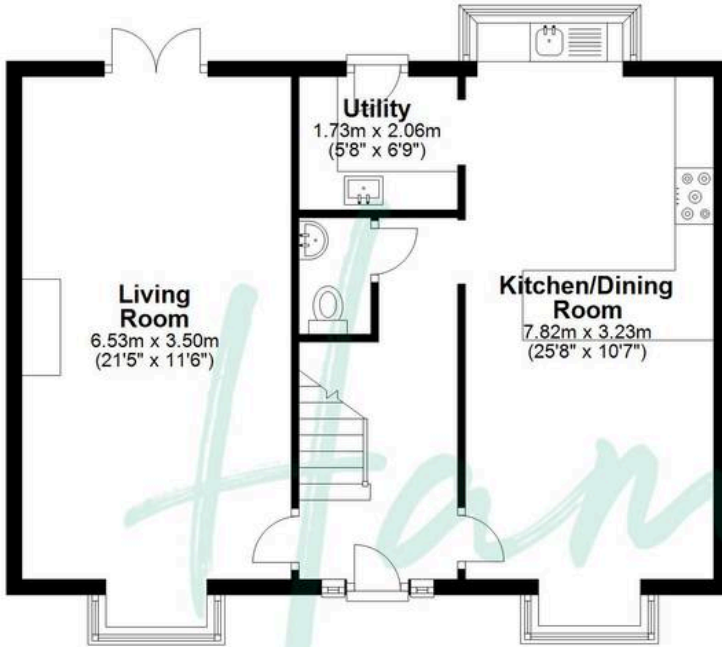
**Bathroom**





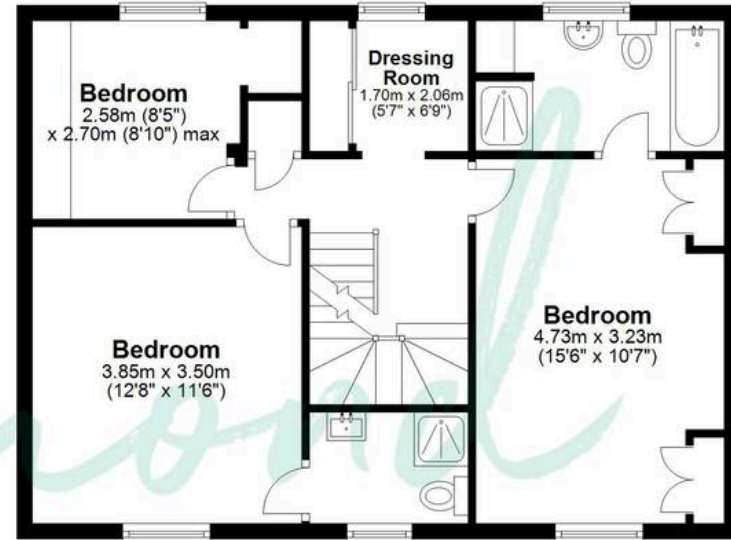
### Ground Floor

Approx. 60.7 sq. metres (653.9 sq. feet)



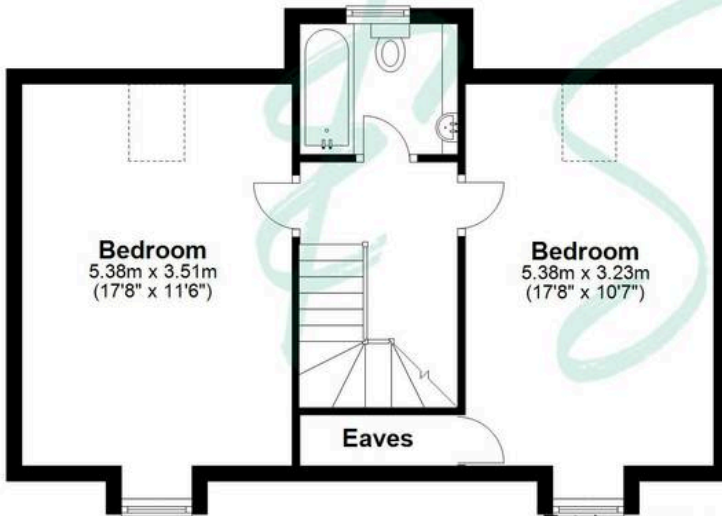
### First Floor

Approx. 58.6 sq. metres (631.1 sq. feet)



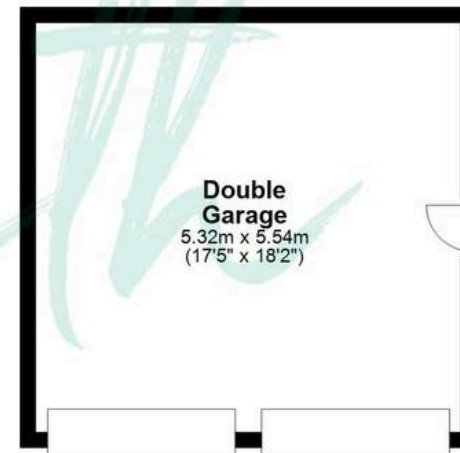
### Second Floor

Approx. 46.9 sq. metres (504.8 sq. feet)



### Garage

Approx. 29.4 sq. metres (316.8 sq. feet)



Total area: approx. 195.7 sq. metres (2106.6 sq. feet)

THE FLOORPLAN IS FOR ILLUSTRATIVE PURPOSES ONLY AND IS NOT TO SCALE. Measurements and features are approximate and may differ from the actual property. Verify all details independently; no liability is accepted for errors or omissions.

Plan produced using PlanUp.