

73 St. Johns Road

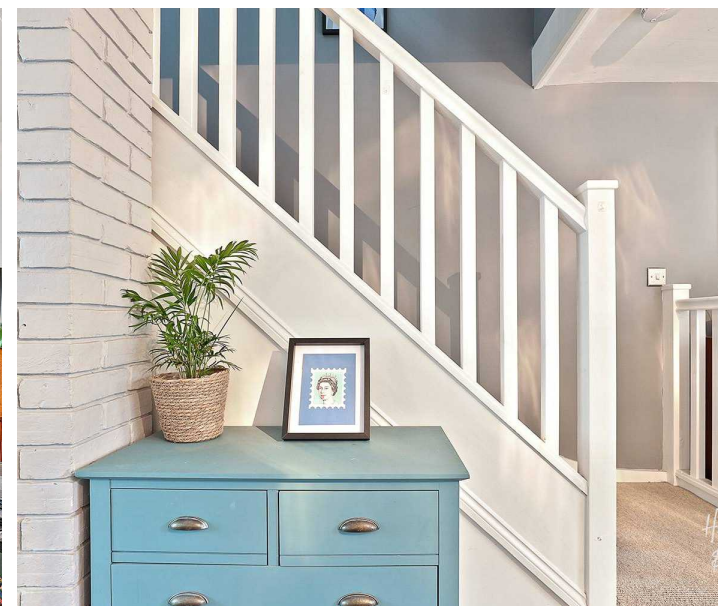
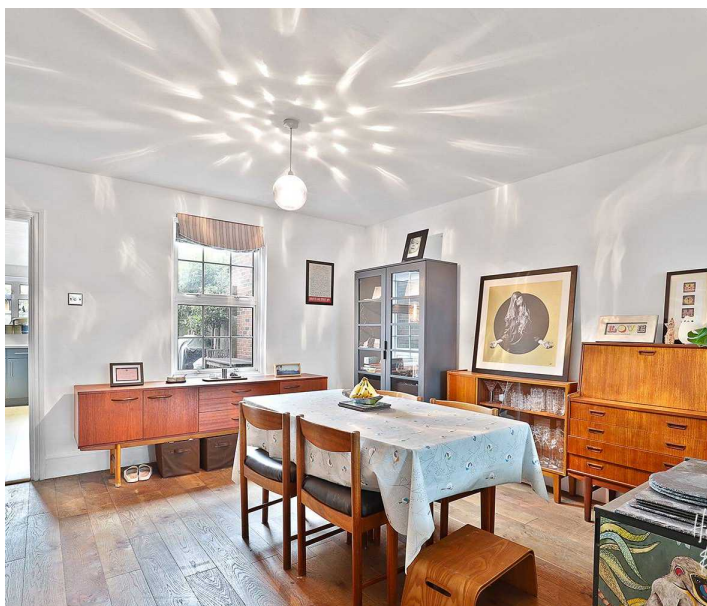
Epping, Essex

Guide Price £650,000

Council Tax band: D

Tenure: Freehold

- SHORT WALK TO HIGH STREET
- SOUTH FACING GARDEN
- PLANNING PERMISSION TO EXTEND
- CLOSE TO LOCAL SCHOOLS
- GAS CENTRAL HEATING
- IMPRESSIVE PRIMARY BEDROOM WITH EN-SUITE



Lounge/ Diner
27' 3" x 15' 3" (8.30m x 4.64m)

Kitchen
13' 6" x 7' 1" (4.12m x 2.15m)

First Floor

Bedroom Two
11' 11" x 9' 10" (3.62m x 3.00m)

Bedroom Three
12' 3" x 9' 10" (3.73m x 3.00m)

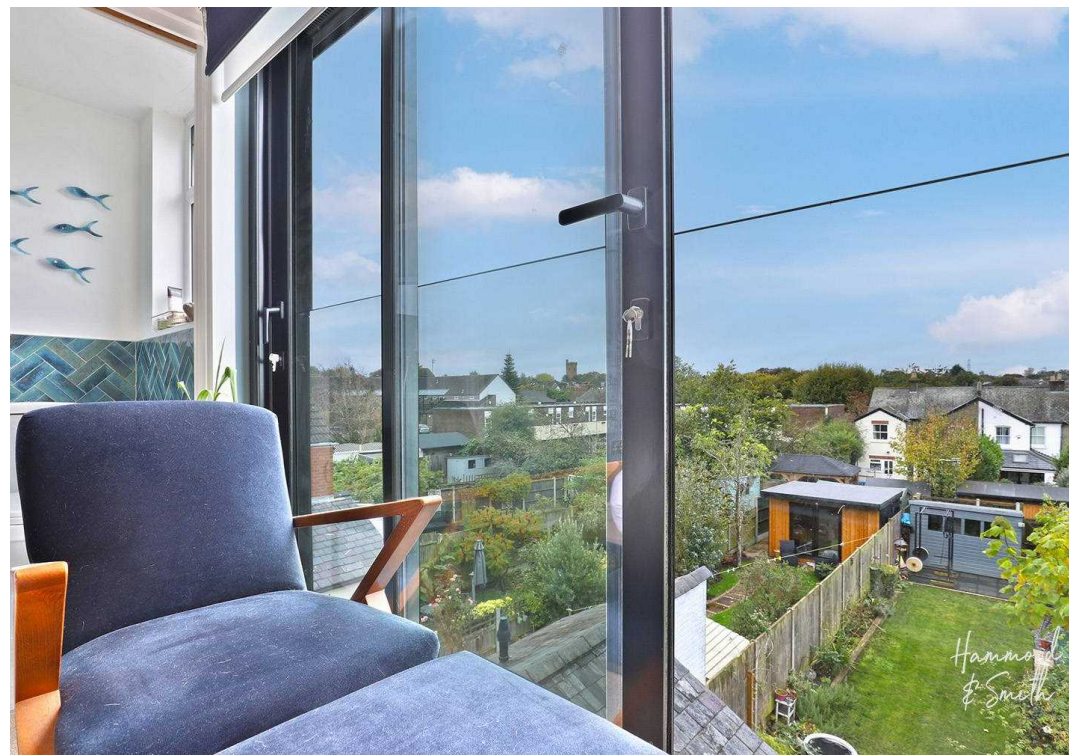
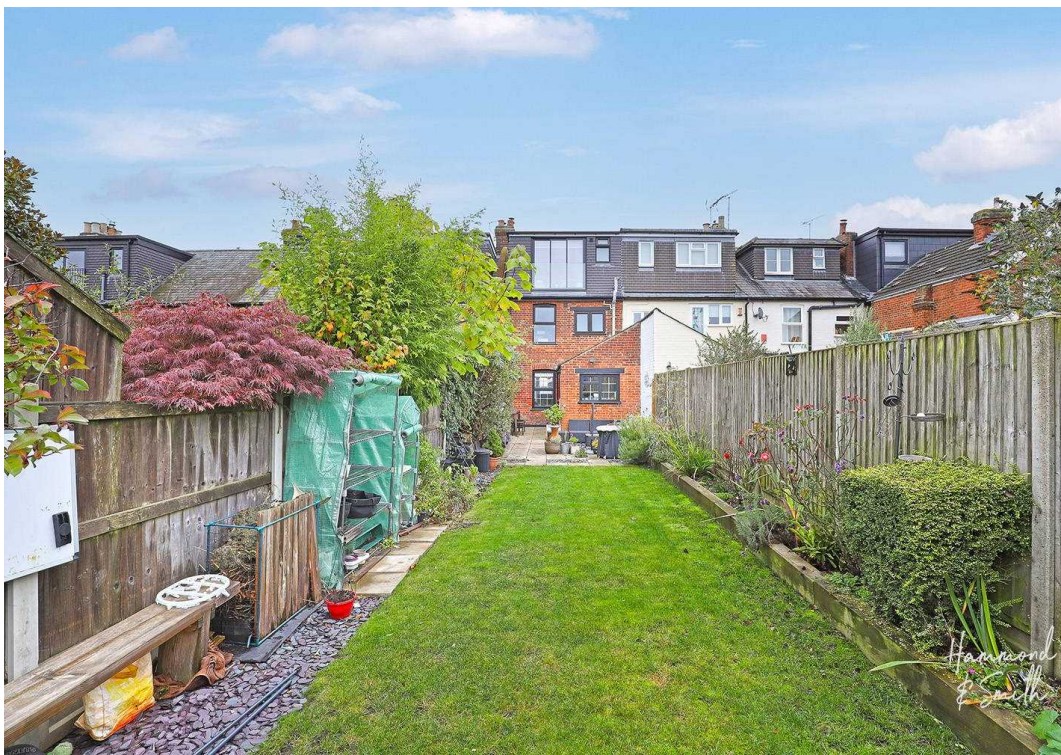
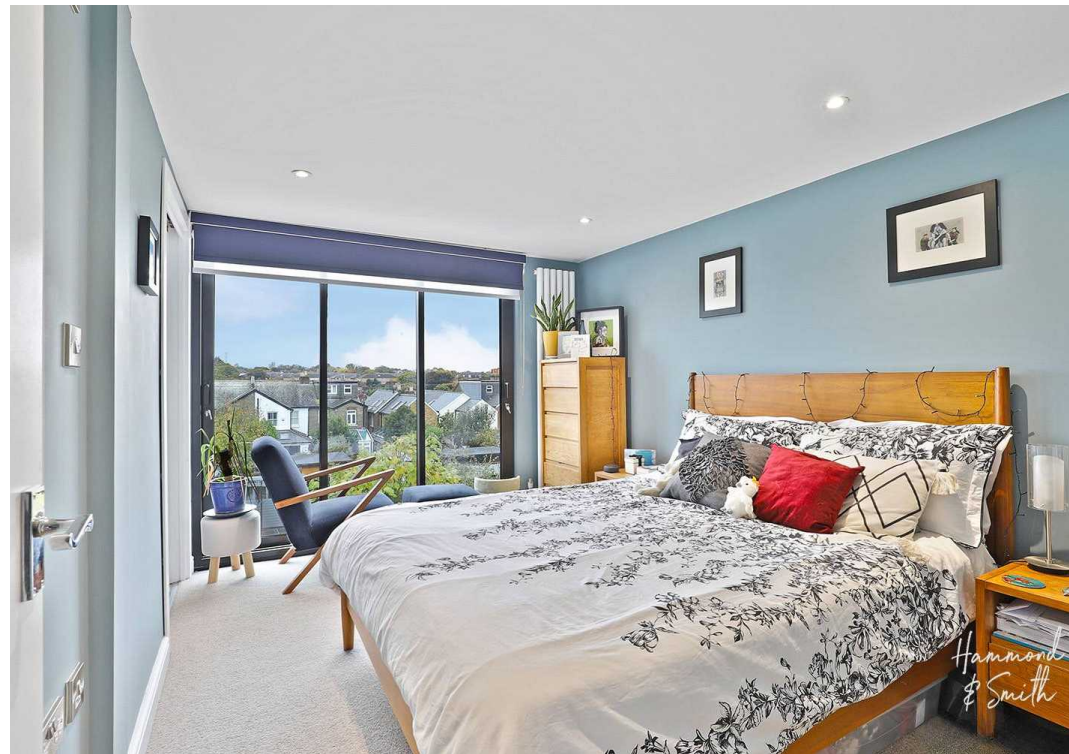
Bedroom Four
8' 6" x 5' 1" (2.60m x 1.55m)

Top Floor

Primary Bedroom
15' 3" x 9' 4" (4.66m x 2.84m)

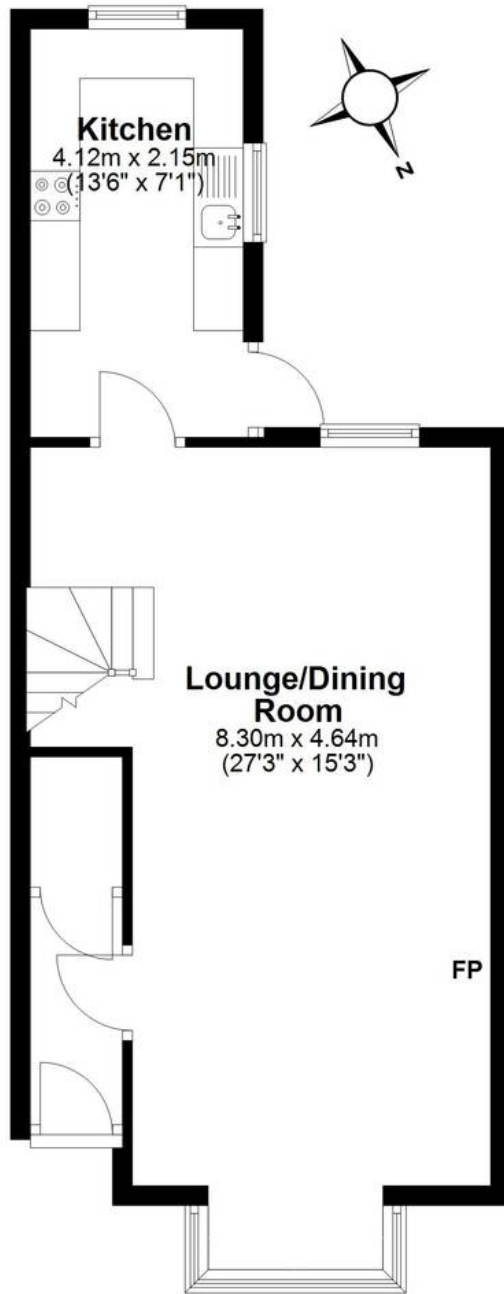
En-suite Shower Room
6' 6" x 3' 5" (1.99m x 1.04m)





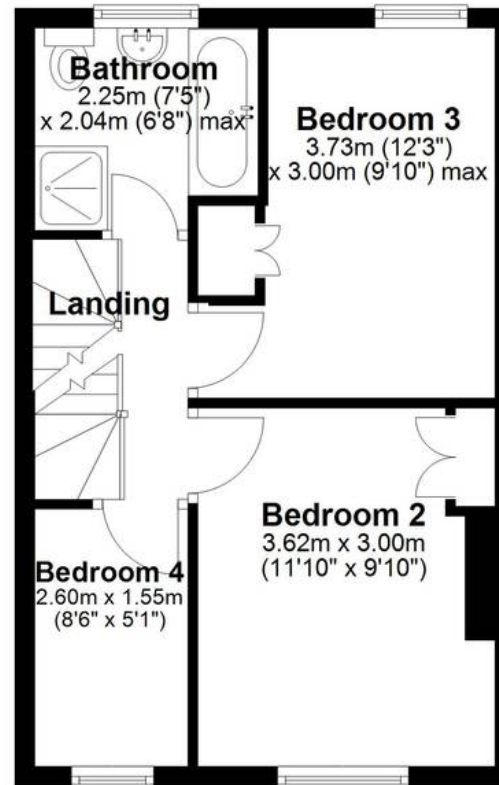
Ground Floor

Approx. 44.5 sq. metres (478.6 sq. feet)



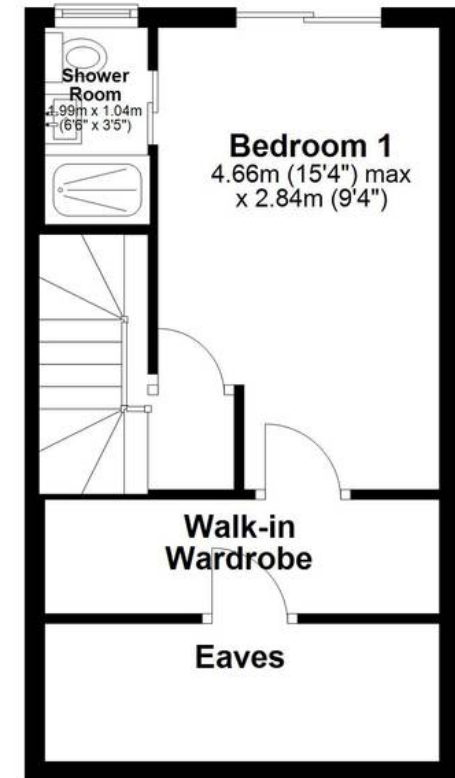
First Floor

Approx. 34.6 sq. metres (372.3 sq. feet)



Second Floor

Approx. 28.1 sq. metres (302.2 sq. feet)



Total area: approx. 107.1 sq. metres (1153.0 sq. feet)