



Flat 4, Harding House Addison Court, Epping

Guide Price £350,000





Flat 4

Harding House Addison Court, Epping

Council Tax band: D

Tenure: Leasehold

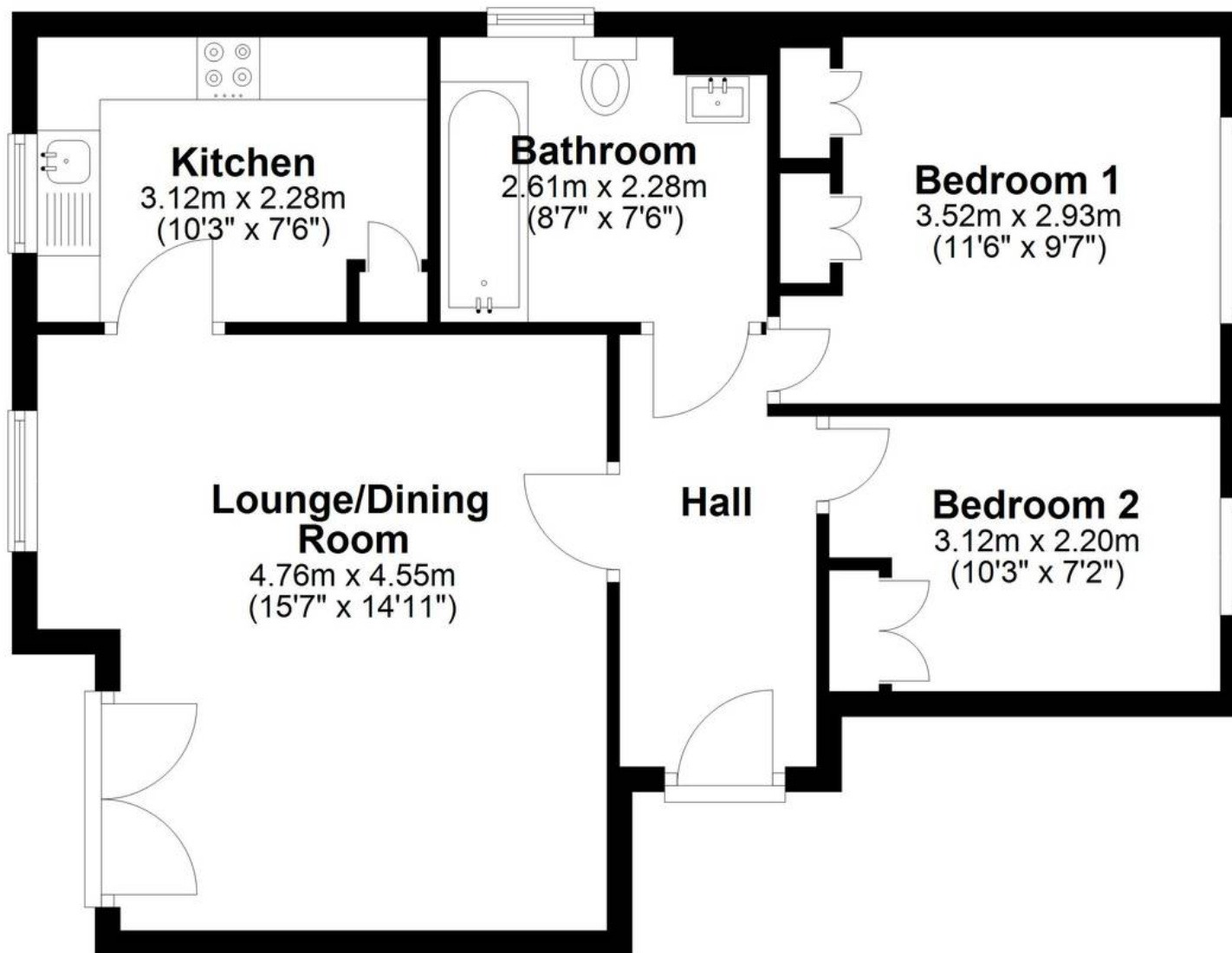
- MODERN TWO BEDROOM APARTMENT
- JULIET BALCONY
- CLOSE TO EPPING STATION
- SHORT WALK TO HIGH STREET
- NEWLY REFURBISHED BATHROOM
- LEASE IN EXCESS OF 100 YEARS
- ALLOCATED PARKING SPACES





First Floor

Approx. 58.0 sq. metres (623.8 sq. feet)



Total area: approx. 58.0 sq. metres (623.8 sq. feet)