

2 The Old Court House Star Lane

Epping, Epping

Council Tax band: E

Tenure: Share of Freehold

- SHARE OF FREEHOLD
- OPEN PLAN KITCHEN DINER WITH ISLAND/BREAKFAST BAR
- LIFT ACCESS
- GATED ALLOCATED PARKING
- UNDERFLOOR HEATING THROUGHOUT
- LARGE BALCONY
- VIDEO ENTRY SYSTEM



Lounge / Diner

25' 11" x 19' 10" (7.90m x 6.05m)

Bedroom One

12' 9" x 12' 7" (3.89m x 3.84m)

En-Suite Shower Room

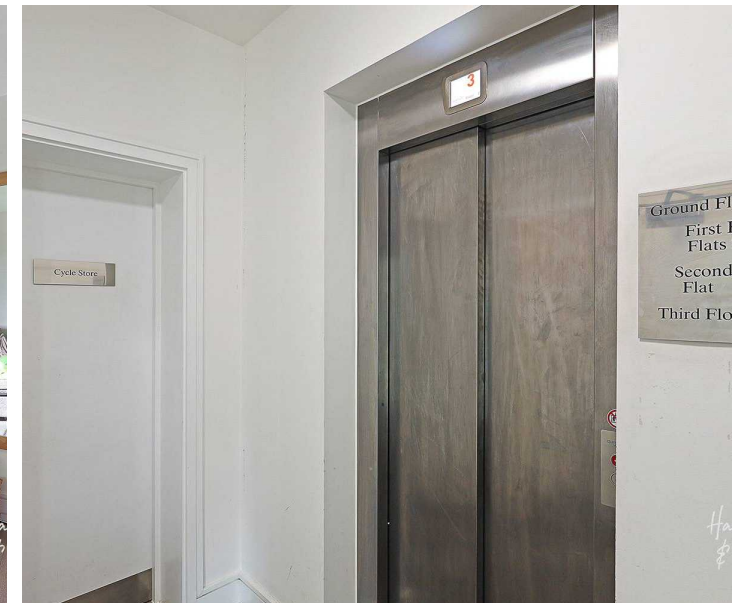
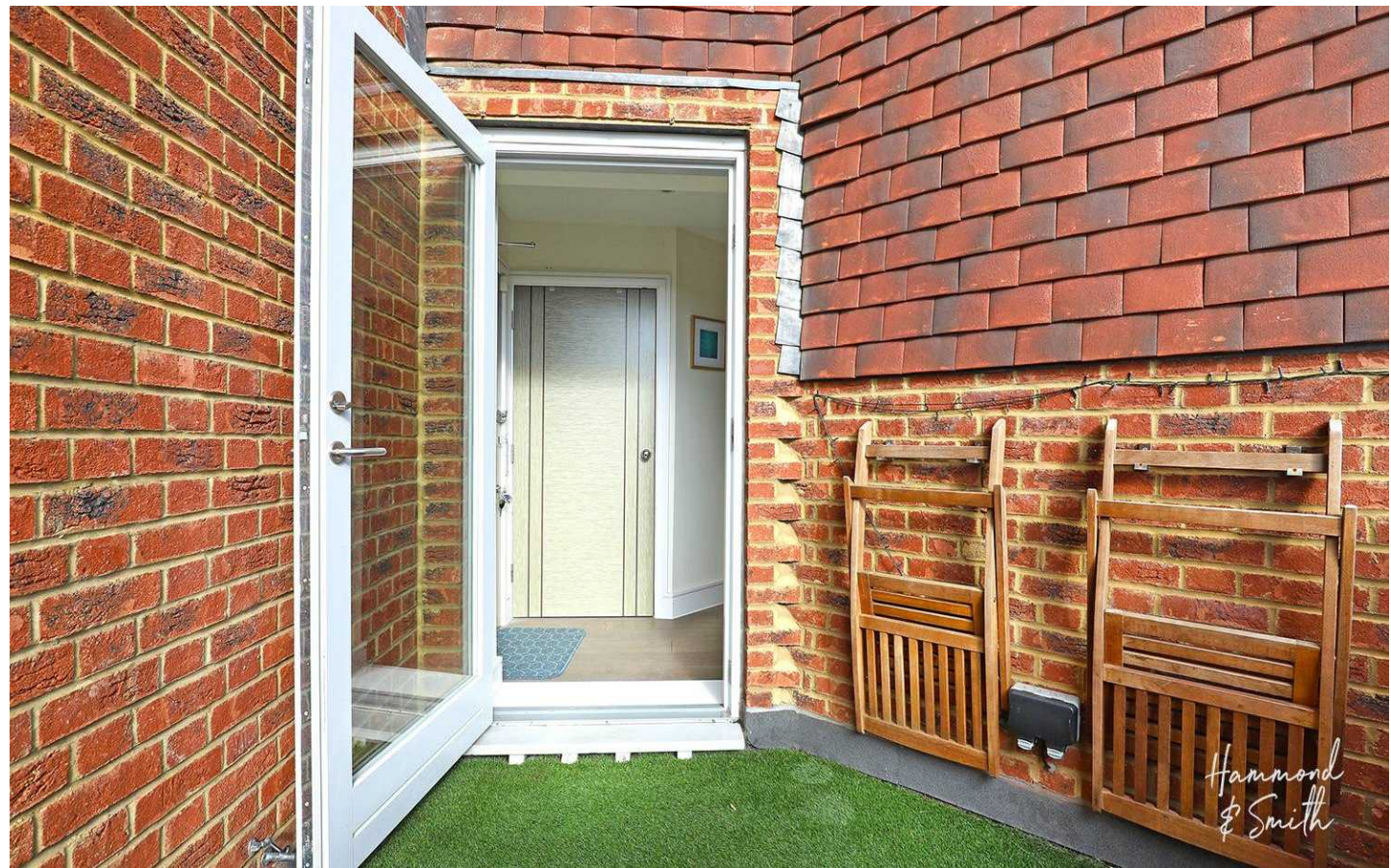
8' 7" x 6' 11" (2.62m x 2.11m)

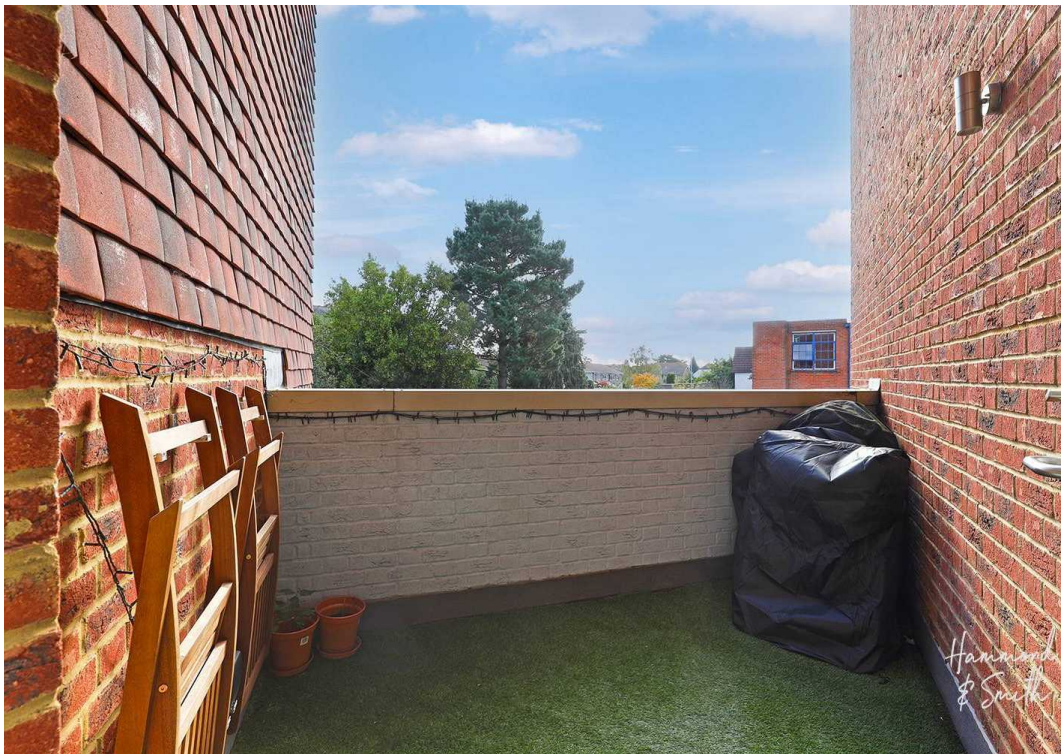
Bedroom Two

11' 4" x 11' 3" (3.46m x 3.42m)

Family Bathroom

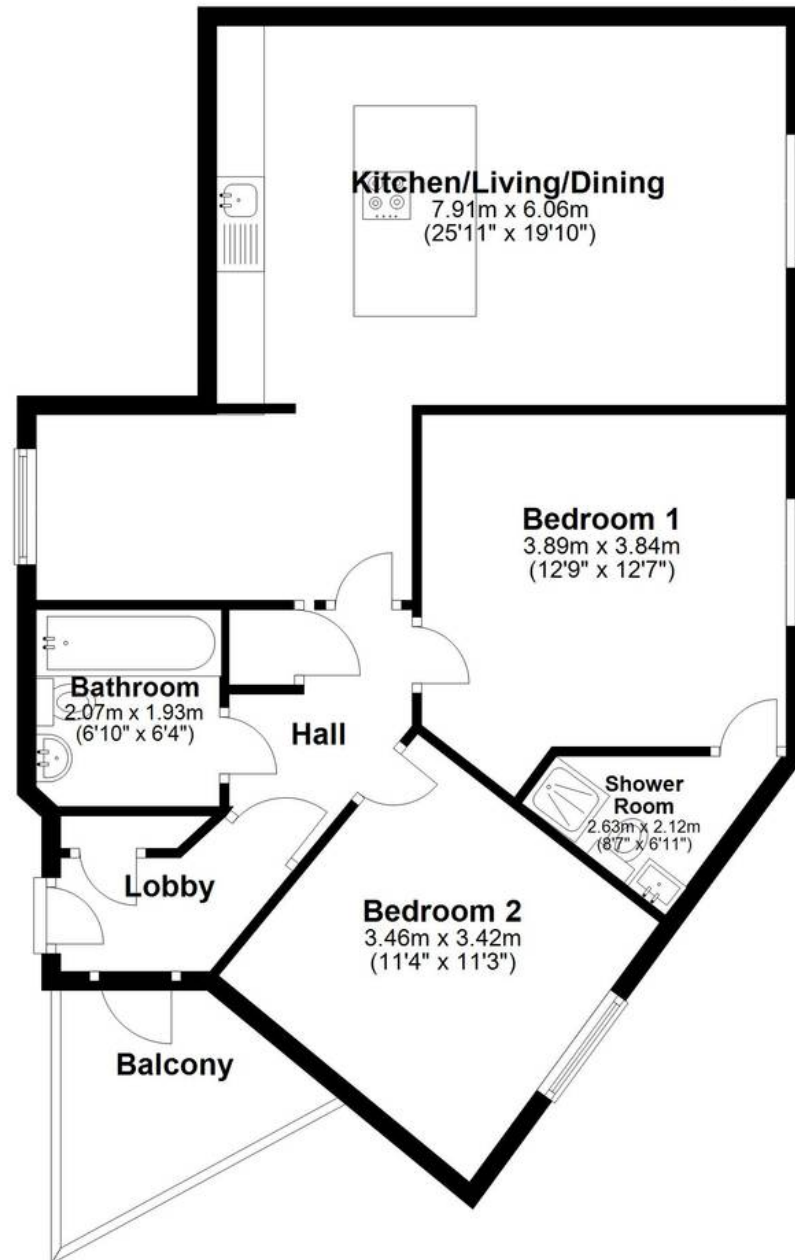
6' 10" x 6' 4" (2.08m x 1.93m)





First Floor

Approx. 73.4 sq. metres (789.7 sq. feet)



Total area: approx. 73.4 sq. metres (789.7 sq. feet)