

# 21 Highfield Green

Epping, Epping

Council Tax band: D

Tenure: Freehold

- SHORT WALK TO HIGH STREET
- CLOSE TO FIELDS
- DOWNSTAIRS WC
- OPEN PLAN KITCHEN/DINER
- THREE BEDROOMS END TERRACE
- PANORAMIC VIEWS
- GARAGE EN BLOC



**Porch**

**WC**

**Lounge Area**

16' 0" x 14' 11" (4.89m x 4.55m)

**Kitchen/Dining Area**

14' 11" x 13' 0" (4.55m x 3.95m)

**Bedroom 1**

16' 7" x 8' 7" (5.05m x 2.62m)

**Bedroom 2**

15' 7" x 8' 7" (4.75m x 2.62m)

**Bedroom 3**

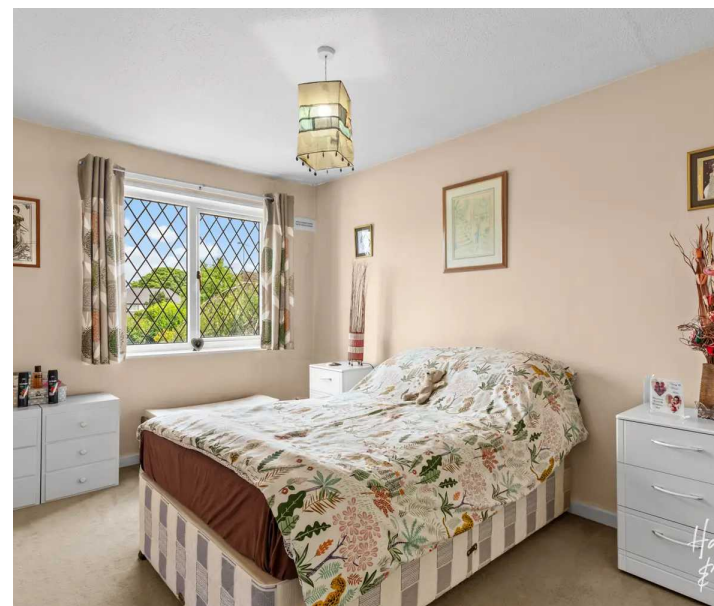
11' 4" x 6' 2" (3.46m x 1.88m)

**Bathroom**

6' 7" x 6' 0" (2.00m x 1.83m)



*Hammond & Smith*

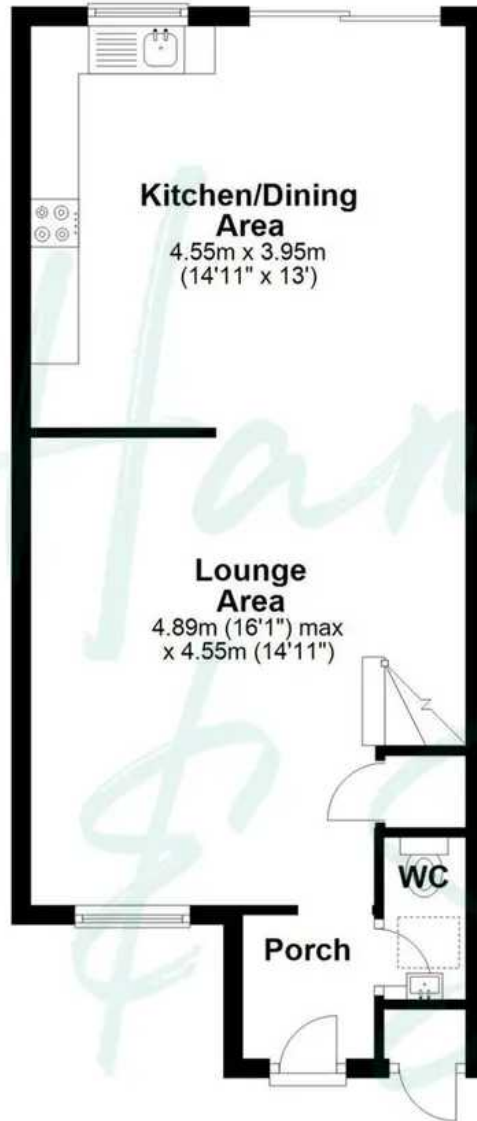


*Ha  
&  
S*



## Ground Floor

Approx. 44.4 sq. metres (477.9 sq. feet)



## First Floor

Approx. 42.0 sq. metres (452.3 sq. feet)



Total area: approx. 86.4 sq. metres (930.2 sq. feet)

FOR ILLUSTRATIVE PURPOSES ONLY. NOT TO SCALE. Whilst every attempt had been made to ensure the accuracy of the floor plan shown, all measurements, positioning, fixtures, features, fittings and any other data shown are an approximate interpretation for illustrative purposes only and are not to scale. No responsibility is taken for any error, omission, miss-statement or use of data shown.