



88 Hemnall Street, Epping

Guide Price £625,000 - £650,000





88 Hemnall Street

Epping, Epping

Council Tax band: D

Tenure: Freehold

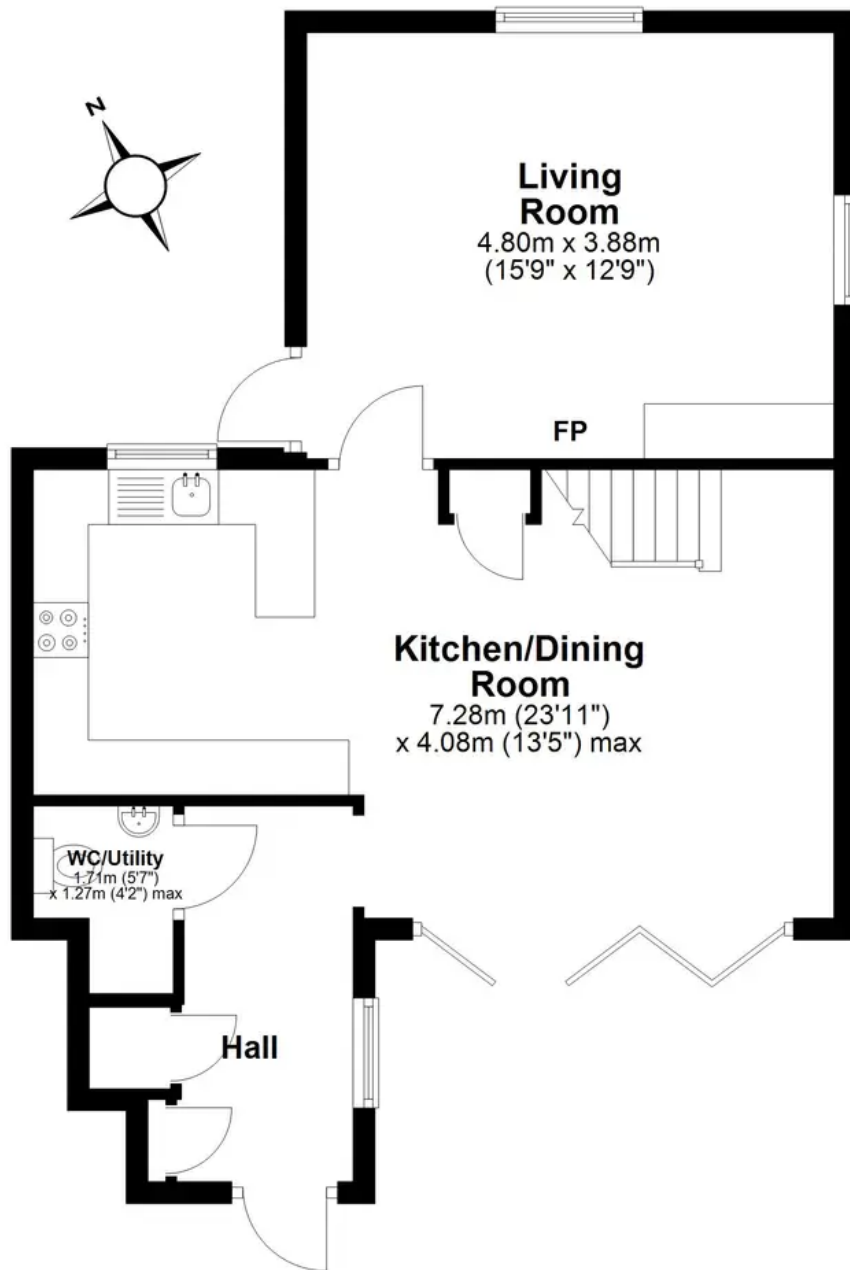
- TWO BEDROOM DETACHED HOME
- DOUBLE GLAZED
- MODERN KITCHEN
- WALLED COURTYARD STYLE GARDEN
- SHORT WALK TO HIGH STREET
- GAS CENTRAL HEATING
- TWO BATHROOMS





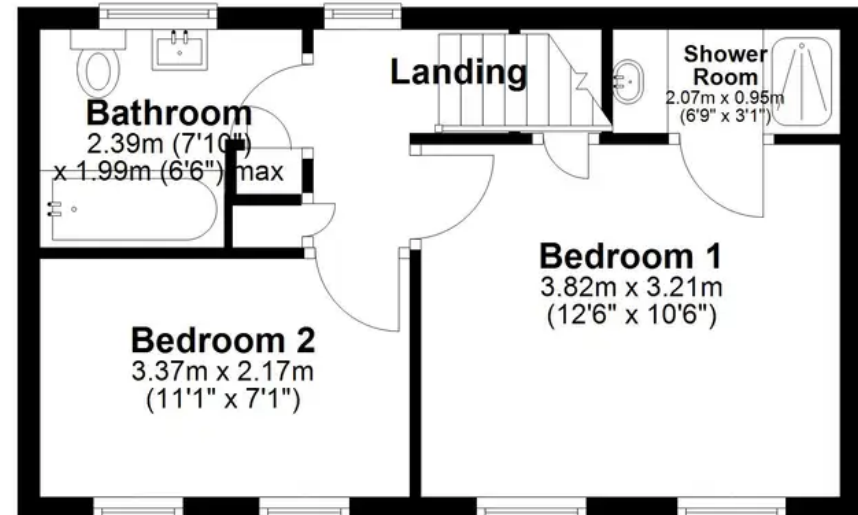
Ground Floor

Approx. 54.7 sq. metres (589.1 sq. feet)



First Floor

Approx. 31.0 sq. metres (333.8 sq. feet)



Total area: approx. 85.7 sq. metres (923.0 sq. feet)