

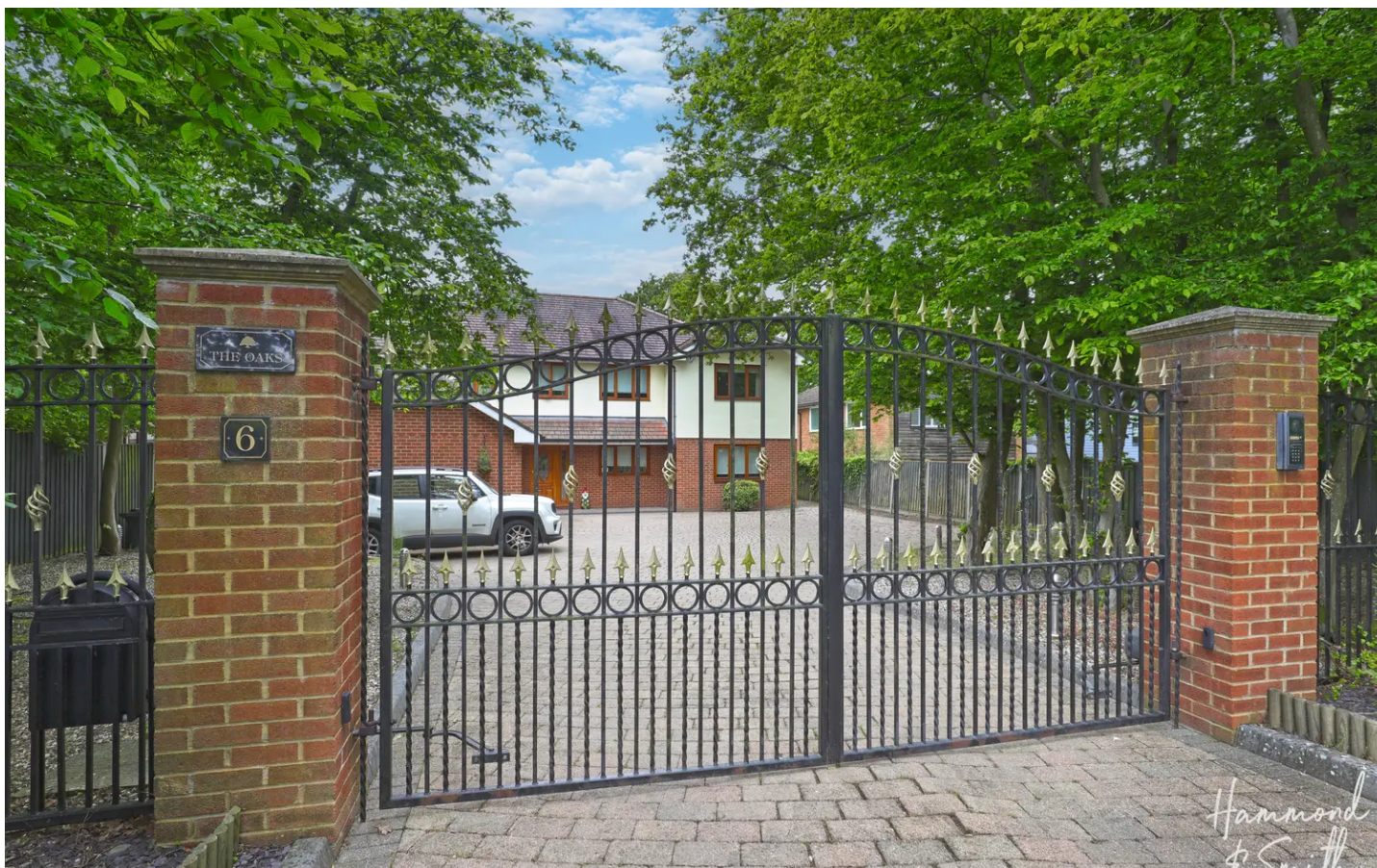
6 Rye Hill Road

Harlow, Harlow

Council Tax band: G

Tenure: Freehold

- CHAIN FREE
- NEWLY BUILT CABIN IN 2023
- LARGE GATED DRIVEWAY
- SPACIOUS FAMILY HOME IN EXCESS OF 3500SQFT
- DOUBLE GARAGE
- FANTASTIC LARGE REAR GARDEN
- BACKING ONTO NATURE RESERVE
- CCTV SECURE



Entrance Hall

Kitchen Area

17' 3" x 10' 8" (5.27m x 3.24m)

Dining Area

19' 9" x 14' 4" (6.02m x 4.37m)

Sitting Room

17' 1" x 14' 7" (5.20m x 4.45m)

Living Room

18' 8" x 17' 1" (5.68m x 5.20m)

Wc

Utility Room

Bedroom Six

12' 4" x 12' 1" (3.75m x 3.68m)

First Floor

Bedroom One

18' 4" x 14' 0" (5.59m x 4.26m)

Dressing Room

16' 4" x 10' 2" (4.98m x 3.11m)

En-suite Shower Room

Bedroom Two

17' 9" x 12' 5" (5.41m x 3.79m)

Walk-in Wardrobe

10' 7" x 7' 10" (3.23m x 2.38m)

Bedroom Three

16' 3" x 12' 1" (4.95m x 3.68m)

Bedroom Four

11' 7" x 11' 0" (3.54m x 3.35m)

Bedroom Five

8' 6" x 6' 4" (2.60m x 1.93m)





Hammon
& Smith



Hammon
& Smith



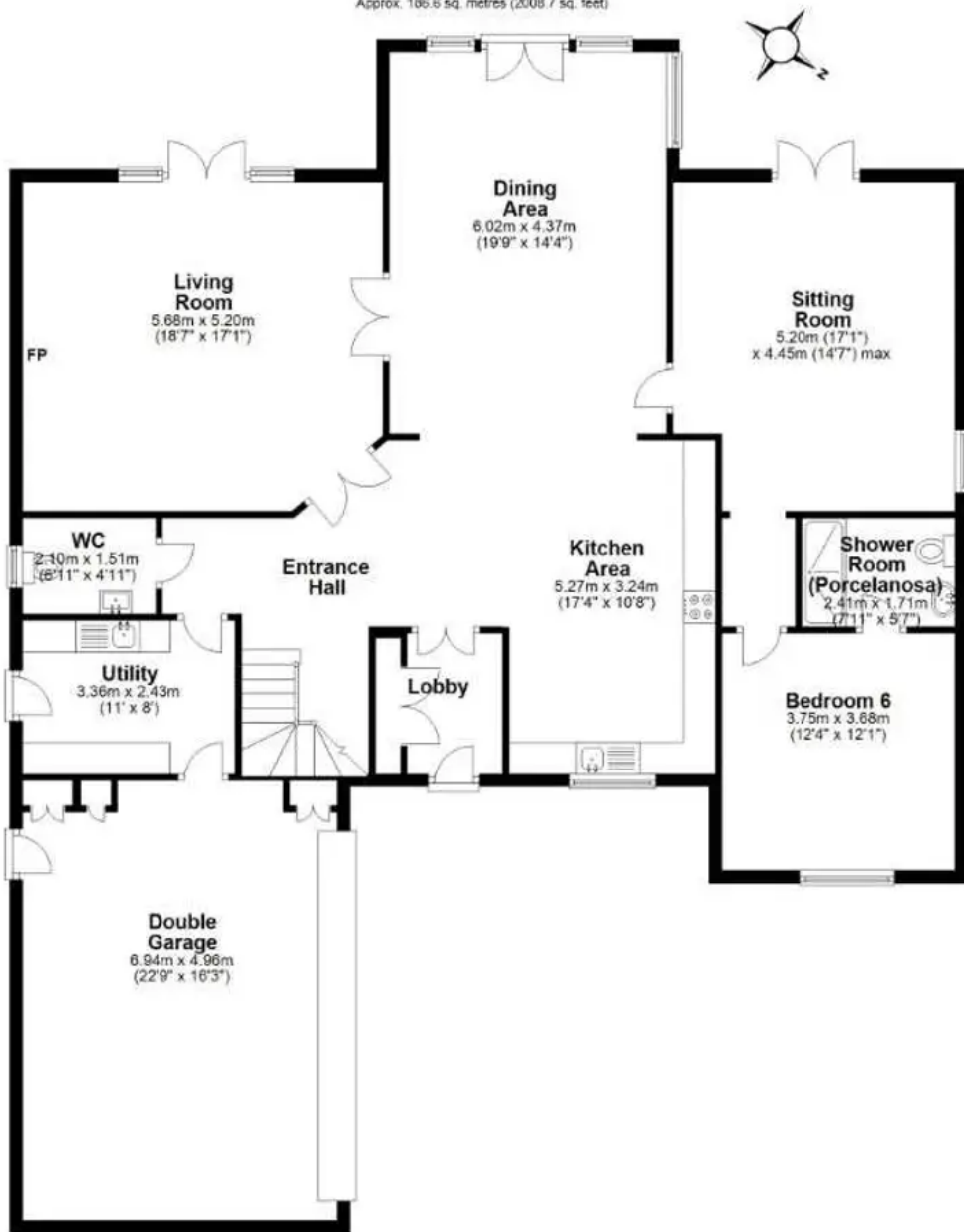
Hammon
& Smith



Hammon
& Smith

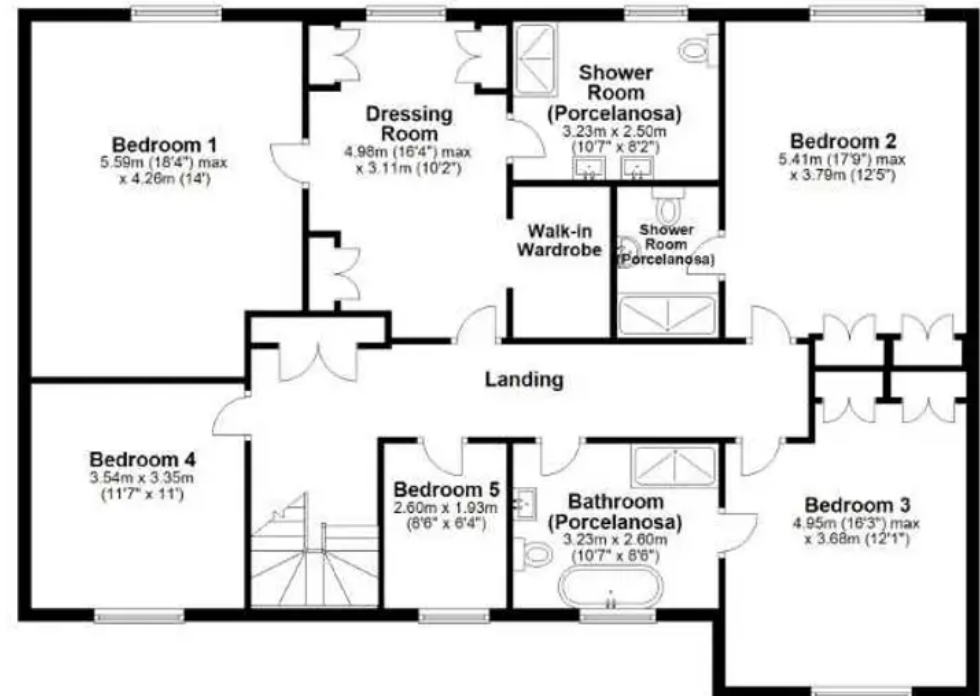
Ground Floor

Approx. 106.6 sq. metres (2008.7 sq. feet)



First Floor

Approx. 144.2 sq. metres (1552.1 sq. feet)



Total area: approx. 330.8 sq. metres (3560.8 sq. feet)