



## Flat 6, Theydon Gate Station Approach, Theydon Bois

Guide Price £320,000







## Flat 6

Theydon Gate Station Approach, Epping

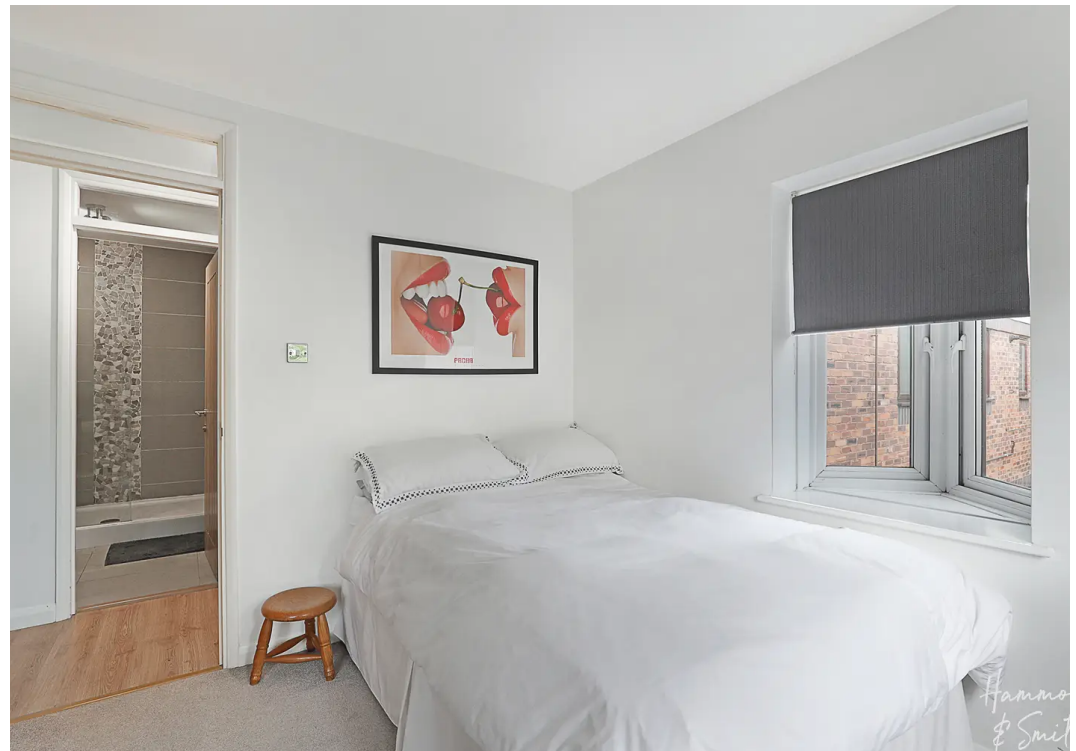
Footsteps away from Theydon Bois Underground Station, this first floor one bedroom apartment sits in a superb spot. With an idyllic village location this is a home that ticks a lot of boxes. Council Tax band: C

Tenure: Leasehold

- ALLOCATED PARKING SPACE
- EXTRA VISITOR SPACES
- MODERNISED THROUGHOUT
- STONES THROW FROM THEYDON BOIS CENTRAL LINE STATION
- IDYLIC VILLAGE LOCATION
- COMMUNAL GARDEN SPACE

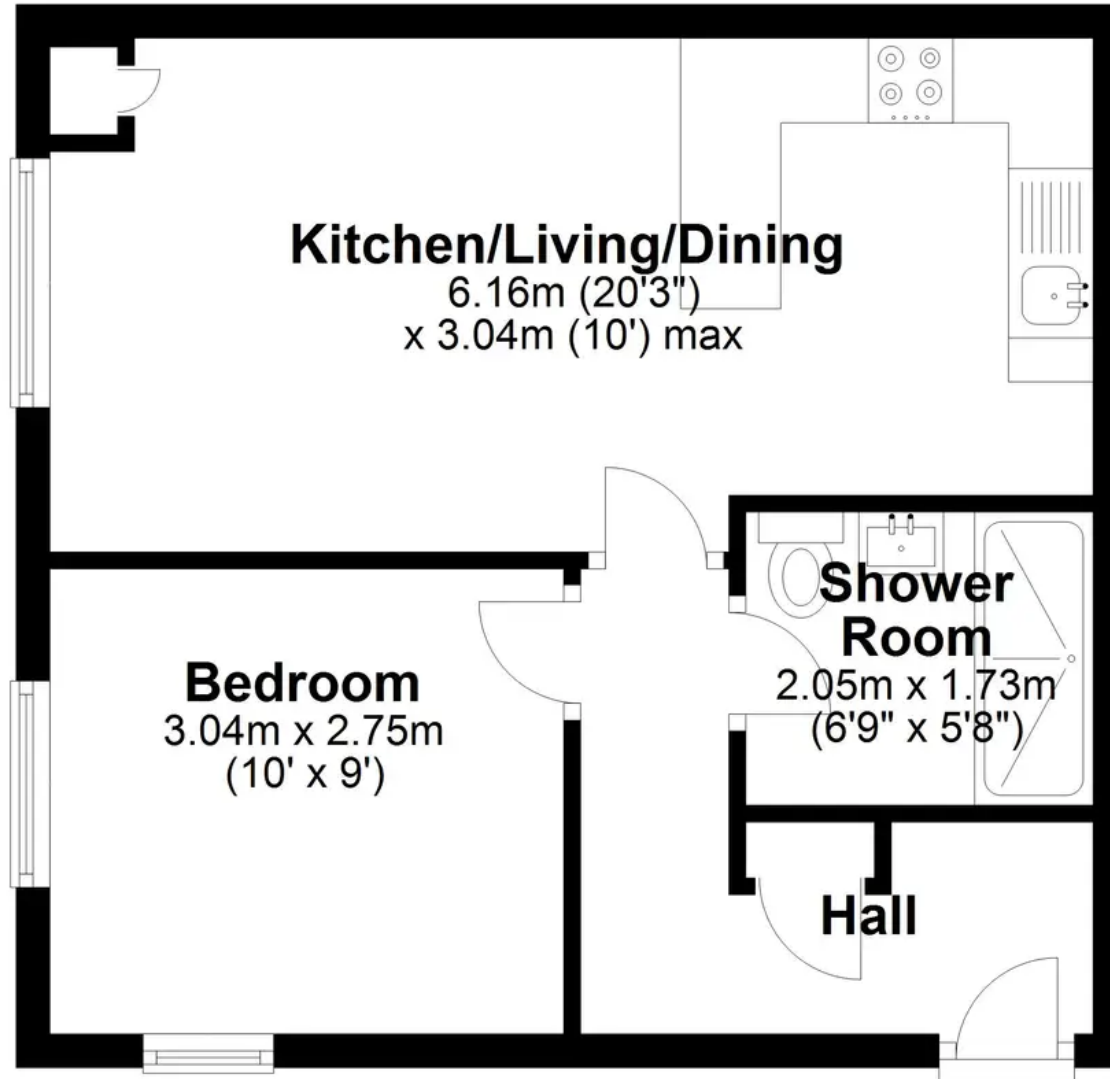






# First Floor

Approx. 35.9 sq. metres (386.9 sq. feet)



Total area: approx. 35.9 sq. metres (386.9 sq. feet)