

# 66 Shaftesbury Road

Epping, Epping

Council Tax band: D

Tenure: Freehold

- THREE BEDROOM SEMI DETACHED HOME
- POTENTIAL TO EXTEND
- OFF ROAD PARKING
- SIDE ACCESS
- BEAUTIFUL VIEWS ACROSS FARMLAND
- CLOSE TO LOCAL SCHOOLS
- SHORT WALK TO HIGH STREET
- GAS CENTRAL HEATING



**Entrance Hall**

**Lounge/ Diner**

22' 2" x 11' 2" (6.75m x 3.40m)

**Kitchen**

13' 2" x 8' 9" (4.01m x 2.67m)

**Conservatory**

10' 10" x 15' 11" (3.31m x 4.84m)

**Bedroom One**

13' 7" x 12' 11" (4.13m x 3.93m)

**Bedroom Two**

13' 7" x 8' 9" (4.13m x 2.67m)

**Bedroom Three**

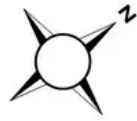
9' 5" x 7' 11" (2.87m x 2.42m)

**Bathroom**

8' 9" x 7' 7" (2.67m x 2.31m)

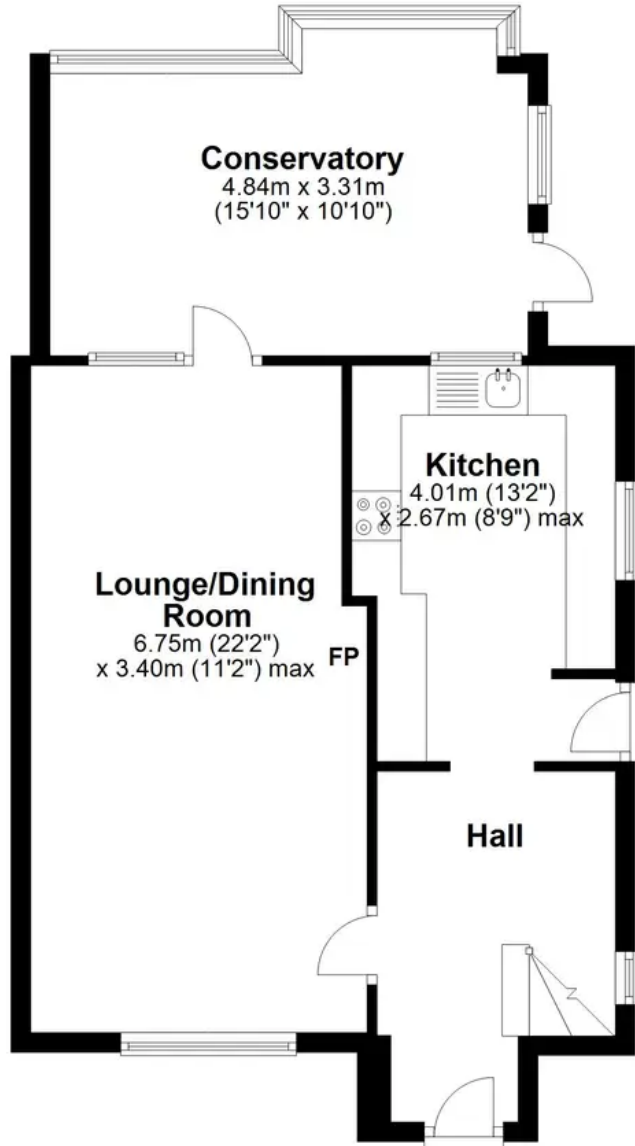






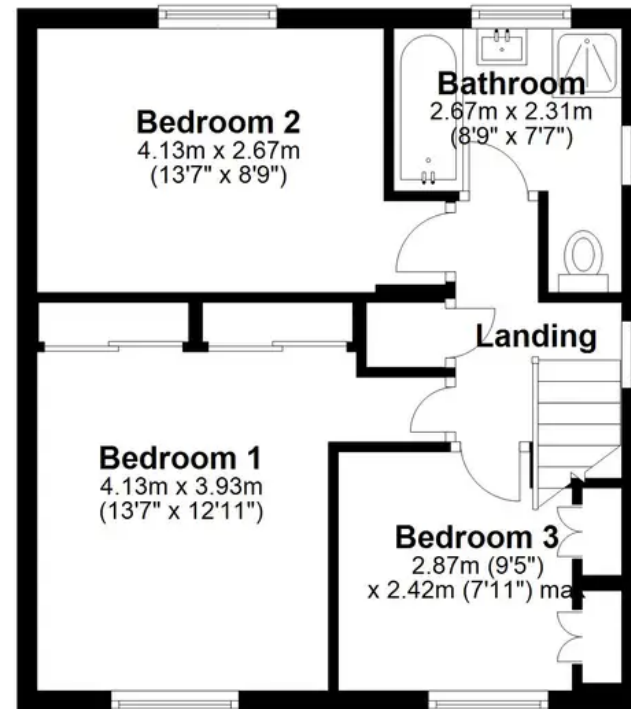
### Ground Floor

Approx. 56.5 sq. metres (607.6 sq. feet)



### First Floor

Approx. 39.9 sq. metres (429.8 sq. feet)



Total area: approx. 96.4 sq. metres (1037.5 sq. feet)