



## Flat 3, Wilhelm Mohr Court Rayley Lane, North Weald

Guide Price £345,000





## Flat 3

Wilhelm Mohr Court Rayley Lane, Epping

A spacious two bedroom ground floor apartment superbly located in the contemporary block of Wilhelm Mohr Court, North Weald. With allocated parking and a smart exterior, this home is sure to leave a great first impression.

Council Tax band: C

Tenure: Leasehold

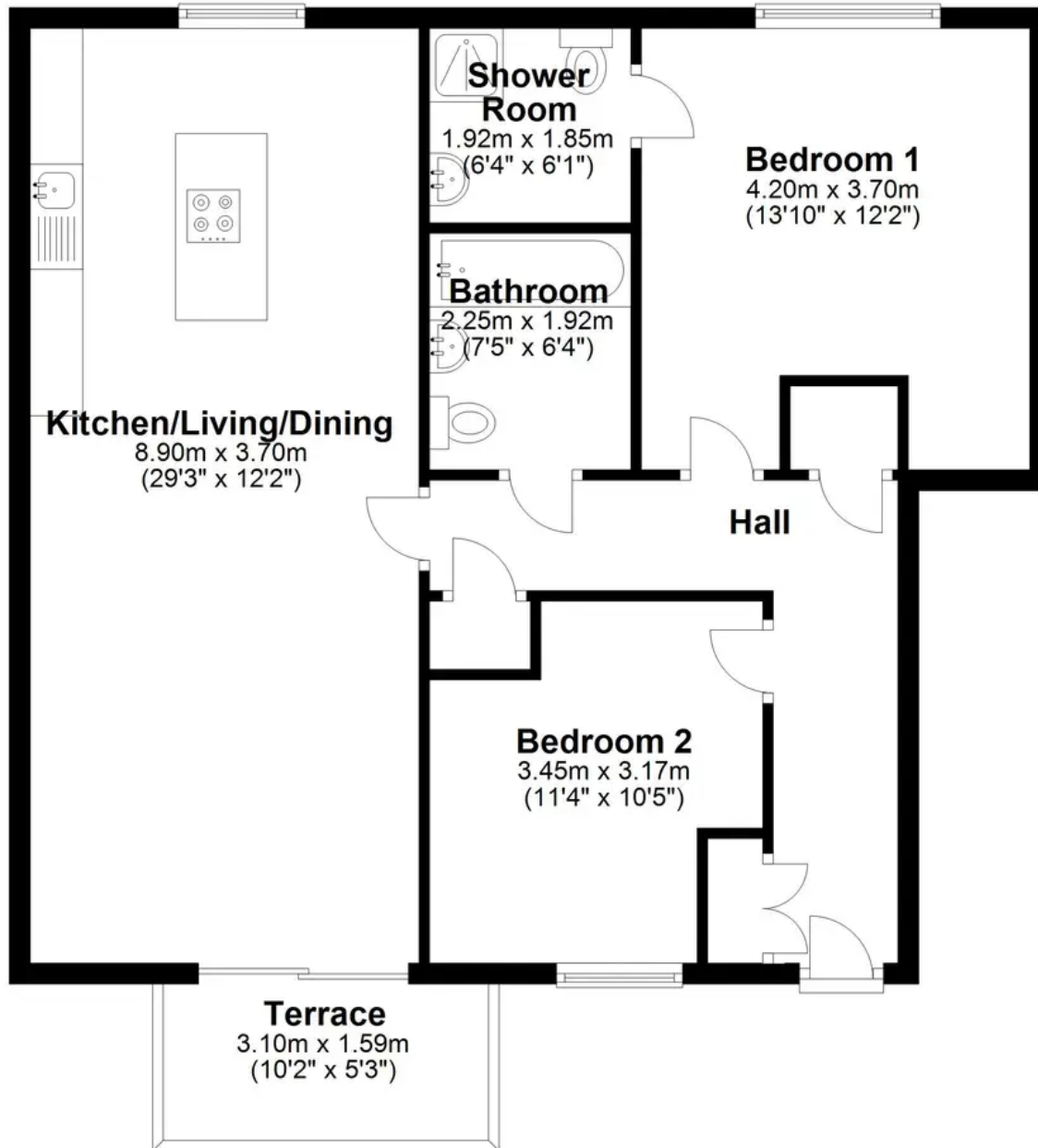
- GROUND FLOOR
- 2 PARKING BAYS
- EN-SUITE TO PRIMARY BEDROOM
- BALCONY TERRACE
- UNDERFLOOR HEATING
- OPEN PLAN KITCHEN/DINER
- SHORT DISTANCE TO EPPING





# Ground Floor

Approx. 78.9 sq. metres (849.0 sq. feet)



Total area: approx. 78.9 sq. metres (849.0 sq. feet)