

# 1 Spriggs Oak Palmers Hill

Epping, Epping

Council Tax band: C

Tenure: Leasehold

- GROUND FLOOR APARTMENT
- ESTABLISHED GARDENS
- PERIOD FEATURES
- ALLOCATED PARKING
- SHORT WALK TO HIGH STREET
- CLOSE TO EPPING STATION
- SHARE OF FREE HOLD
- EPC RATING D



**Lounge/ Diner**

22' 0" x 14' 0" (6.71m x 4.27m)

**Kitchen**

8' 9" x 7' 3" (2.66m x 2.22m)

**Bedroom One**

13' 3" x 12' 0" (4.04m x 3.66m)

**Bedroom Two**

9' 6" x 8' 9" (2.90m x 2.66m)

**Bathroom**

6' 2" x 6' 0" (1.89m x 1.83m)

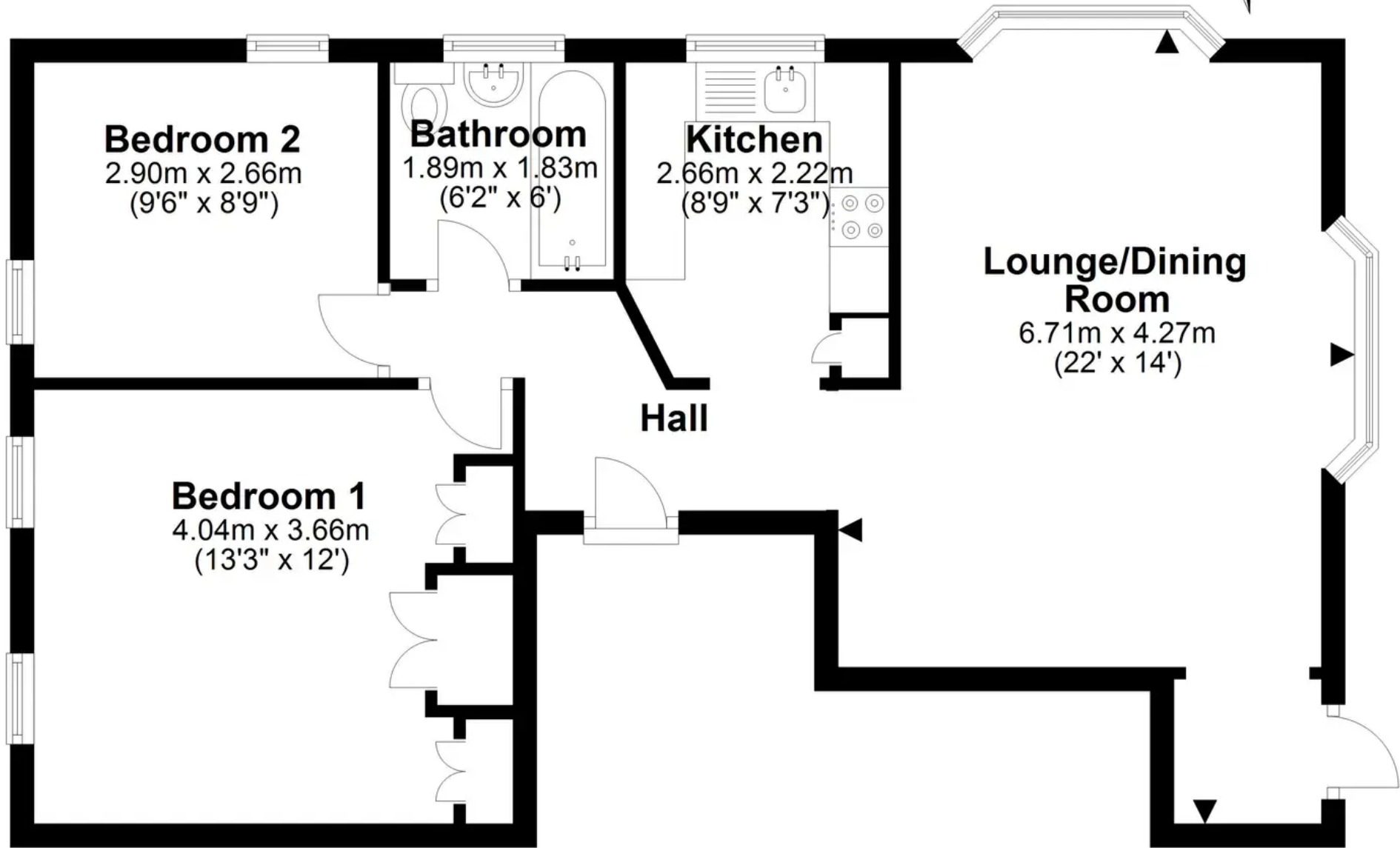
If you're looking for somewhere pretty that's stacked with period features and charm then be sure to look here. With a welcoming first impression, a smartly presented gravelled driveway leads the way to a spacious apartment that's been beautifully styled with a superb use of colour. Spriggs Oak is superbly placed in Epping where you can walk to everything you need. If outside space is in order, these apartments offer beautiful communal grounds, and there's also Stonards Park and of course the leafy canopy of the forest just a short walk away. If you're new to the area, on the weekend why not take a stroll down to Harleys and treat yourself to breakie followed by a browse around the shops. Or maybe catch the tube into London. Quite simply new adventures await you here!





# Ground Floor

Approx. 59.2 sq. metres (636.9 sq. feet)



Total area: approx. 59.2 sq. metres (636.9 sq. feet)