

10 Elm Gardens

North Weald, Epping

Council Tax band: F

Tenure: Freehold

- FOUR DOUBLE BEDROOMS
- POTENTIAL TO EXTEND
- NEW WINDOWS AND DOORS IN 2023
- GAS CENTRAL HEATING
- DOWNSTAIRS WC
- CUL DE SAC LOCATION
- CLOSE TO LOCAL SHOPS



Entrance Hall

Lounge/ Diner

21' 9" x 17' 11" (6.63m x 5.46m)

Kitchen/ Breakfast Room

11' 7" x 9' 3" (3.54m x 2.81m)

WC

First Floor

Bedroom

12' 0" x 10' 8" (3.66m x 3.25m)

Bedroom

10' 11" x 10' 8" (3.32m x 3.25m)

Bedroom

10' 11" x 10' 10" (3.32m x 3.30m)

Bedroom

12' 0" x 10' 9" (3.66m x 3.28m)

Bathroom

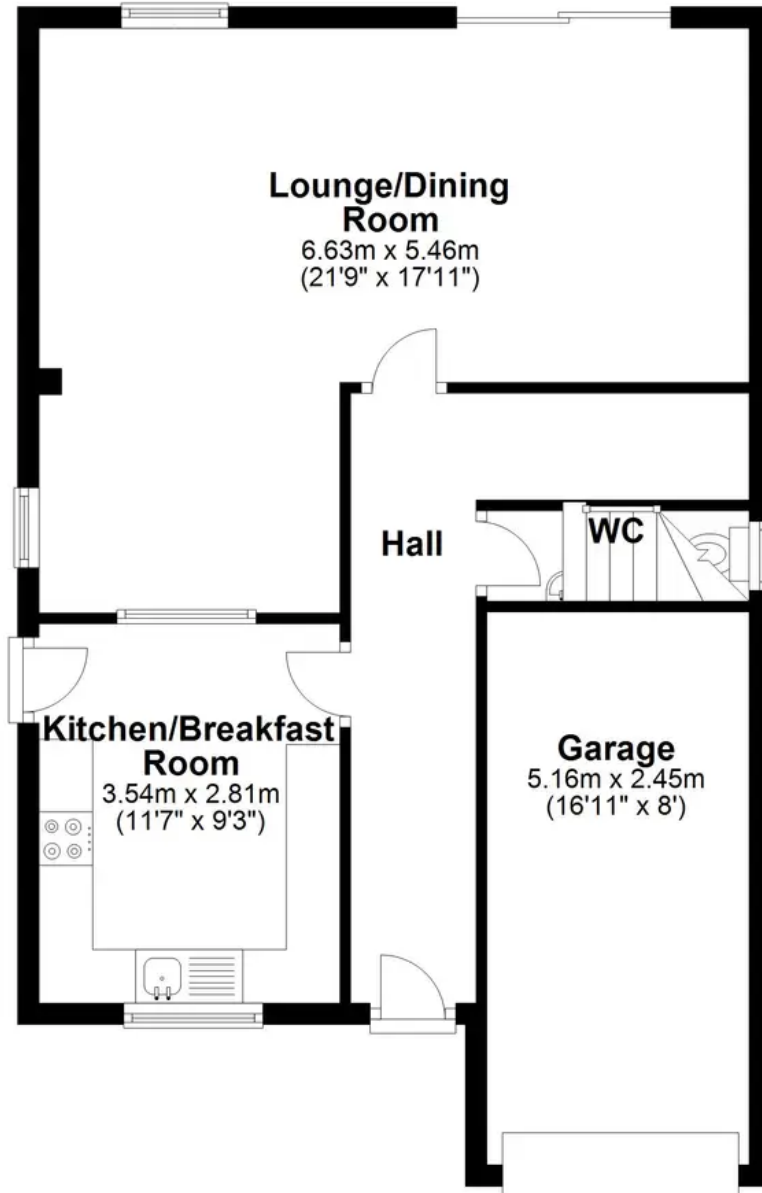
7' 7" x 7' 6" (2.32m x 2.29m)





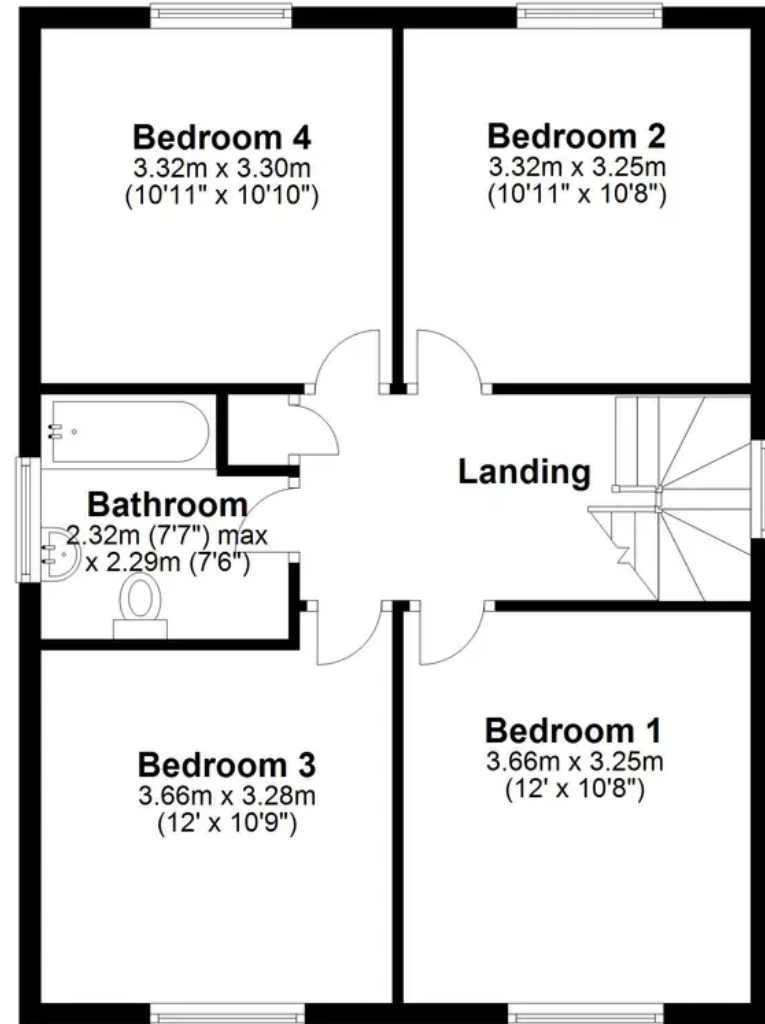
Ground Floor

Main area: approx. 50.8 sq. metres (546.4 sq. feet)
Plus garages, approx. 12.6 sq. metres (136.1 sq. feet)



First Floor

Approx. 60.4 sq. metres (650.0 sq. feet)



Main area: Approx. 111.1 sq. metres (1196.4 sq. feet)

Plus garages, approx. 12.6 sq. metres (136.1 sq. feet)