



## 22 Luna Court Newmans Lane, Loughton

Guide Price £500,000

Hammond







## 22 Luna Court Newmans Lane

Loughton, Loughton

Beautifully cohesive, this sleek two bedroom Loughton apartment is utterly gorgeous inside and out. With far reaching views, internal lift access, two allocated parking bays, plus a large communal roof terrace and private balcony, there's so much to love here.

Council Tax band: E

Tenure: Leasehold

- 2 ALLOCATED PARKING BAYS
- WALKING DISTANCE TO DEBDEN STATION
- MASTER EN-SUITE
- SMEG APPLIANCES
- BALCONY SPACE
- STUNNING VIEWS OVER LONDON SKYLINE
- 60ft x 55ft COMMUNAL TERRACE FOR RESIDENTS

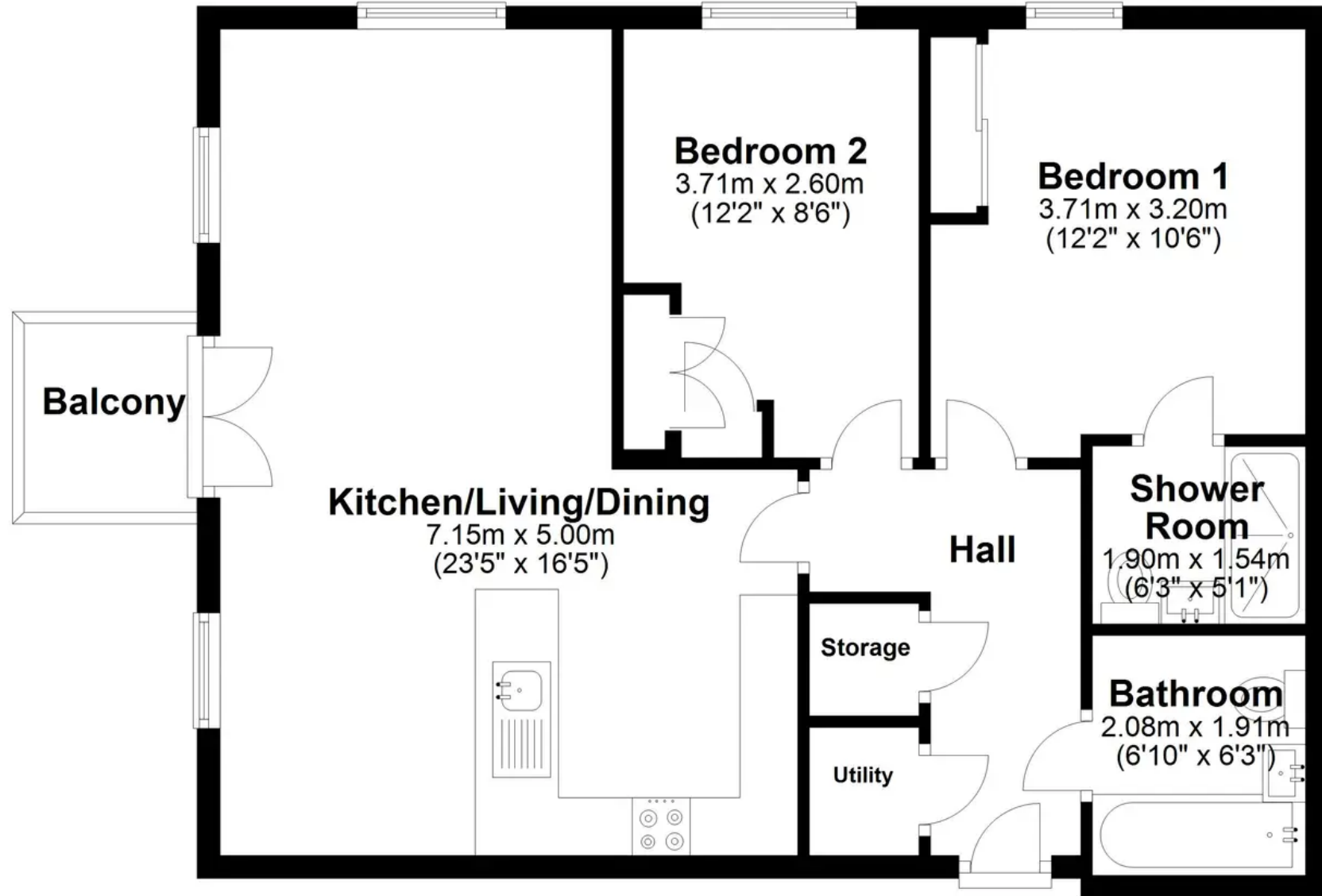






# Second Floor

Approx. 67.7 sq. metres (728.9 sq. feet)



Total area: approx. 67.7 sq. metres (728.9 sq. feet)