



1 The Old Court House Star Lane, Epping

Guide Price £485,000



mond



1 The Old Court House Star Lane

Epping, Epping

Council Tax band: E

Tenure: Share of Freehold

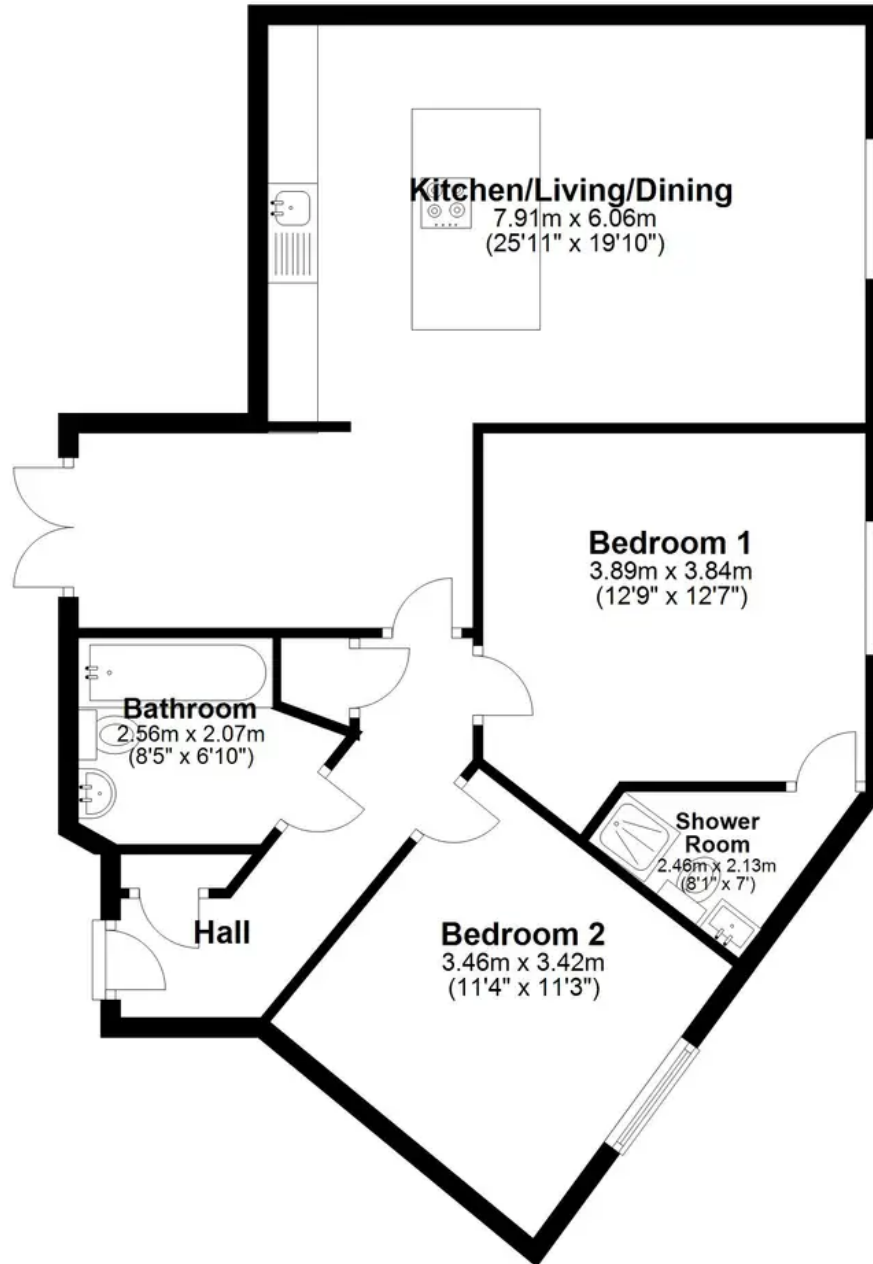
- TWO DOUBLE BEDROOMS
- CLOSE TO EPPING HIGH STREET
- SECURE GATED PARKING
- TWO BATHROOMS
- BUILT IN 2017
- MODERN INTERGRATED KITCHEN
- COURTYARD GARDEN
- SHARE OF FREEHOLD





Ground Floor

Approx. 73.1 sq. metres (786.4 sq. feet)



Total area: approx. 73.1 sq. metres (786.4 sq. feet)