

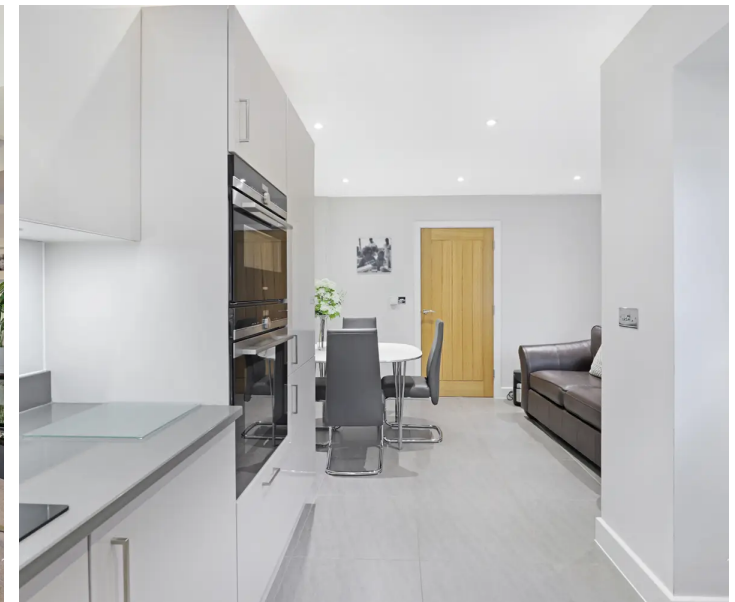
6 Hazelwood Park Hastingwood Road

Hastingwood, Harlow

Council Tax band: E

Tenure: Freehold

- BUILT IN 2017
- SMALL MODERN DEVELOPMENT
- THREE DOUBLE BEDROOMS
- TWO BATHROOMS
- FARMLAND VIEWS
- SLEEK INTERGRATED KITCHEN
- EN-SUITE TO MASTER



Porch

Living Room

13' 0" x 11' 3" (3.95m x 3.44m)

Kitchen/ Diner

19' 8" x 11' 3" (6.00m x 3.44m)

Downstairs Wc

First Floor

Bedroom One

11' 3" x 9' 7" (3.44m x 2.92m)

En-suite

5' 5" x 4' 11" (1.66m x 1.51m)

Bedroom Two

11' 3" x 9' 5" (3.44m x 2.86m)

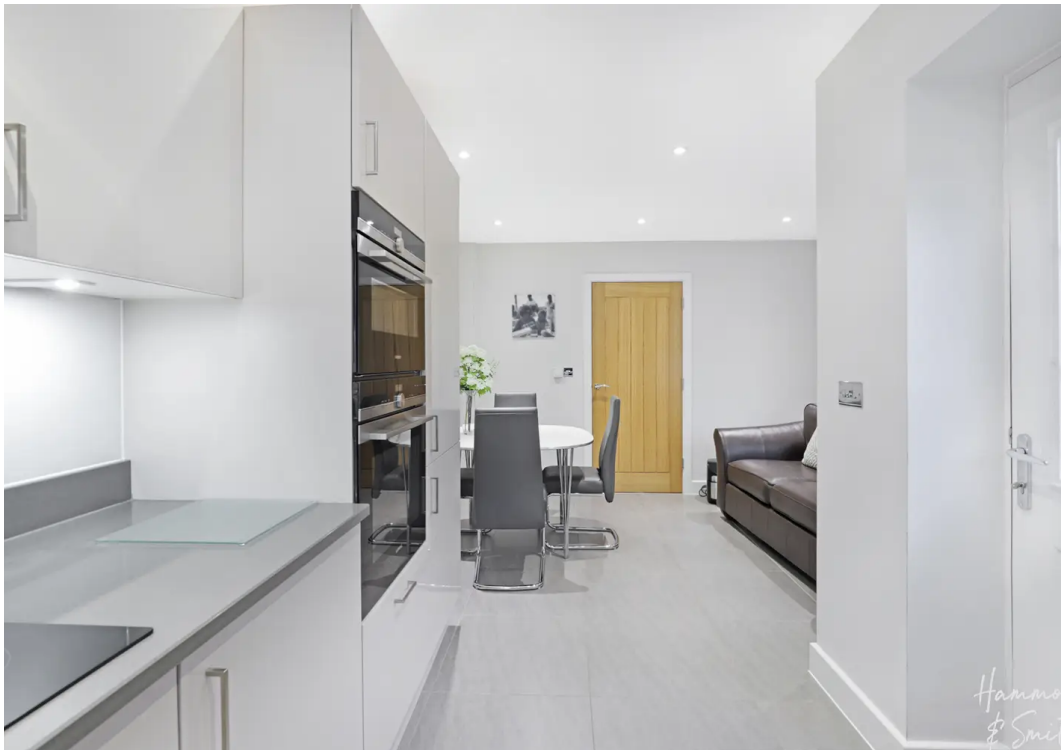
Bathroom

7' 8" x 4' 11" (2.33m x 1.51m)

Bedroom Three

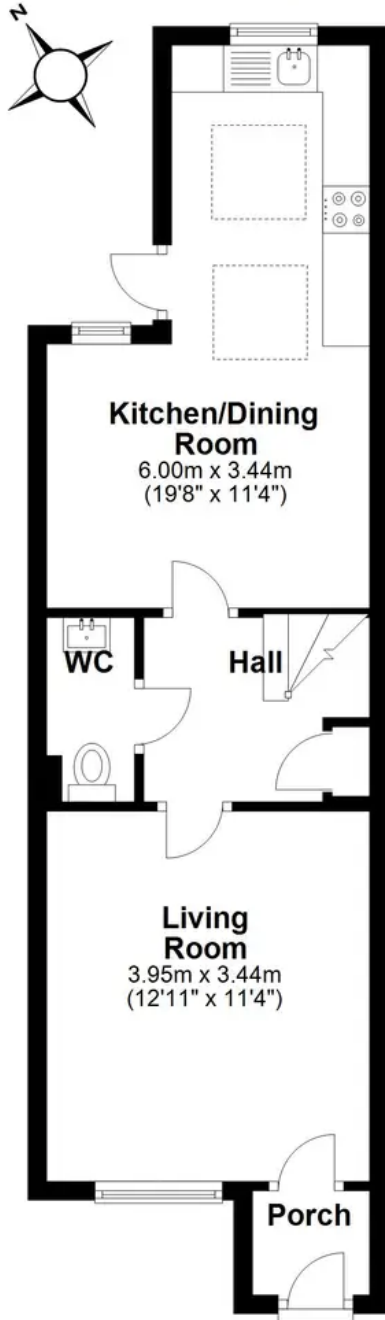
21' 4" x 11' 3" (6.50m x 3.44m)





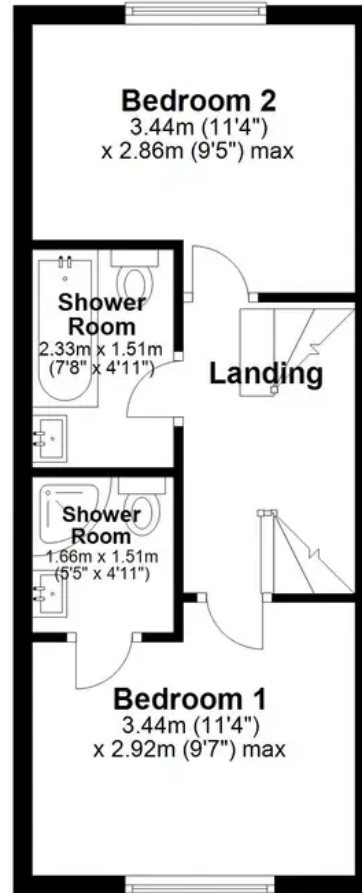
Ground Floor

Approx. 39.0 sq. metres (419.8 sq. feet)



First Floor

Approx. 31.2 sq. metres (335.6 sq. feet)



Second Floor

Approx. 19.6 sq. metres (210.6 sq. feet)



Total area: approx. 89.7 sq. metres (966.0 sq. feet)