

59 Hemnall Street

Epping, Epping

Council Tax band: F

Tenure: Freehold

- SOUTH FACING GARDEN
- CHAIN FREE
- POTENTIAL TO EXTEND (STP)
- KITCHEN/BREAKFAST ROOM
- SOUGHT AFTER LOCATION
- DETACHED
- CLOSE TO STATION AND HIGH STREET
- LARGE LOUNGE/DINING ROOM



Hall

Lounge/Dining Room

33' 0" x 16' 3" (10.06m x 4.95m)

Kitchen/Breakfast Room

13' 0" x 10' 1" (3.96m x 3.07m)

WC

Bedroom 1

13' 9" x 13' 4" (4.20m x 4.06m)

Bedroom 2

13' 9" x 11' 2" (4.20m x 3.40m)

Bedroom 3

10' 2" x 8' 4" (3.10m x 2.54m)

Bathroom

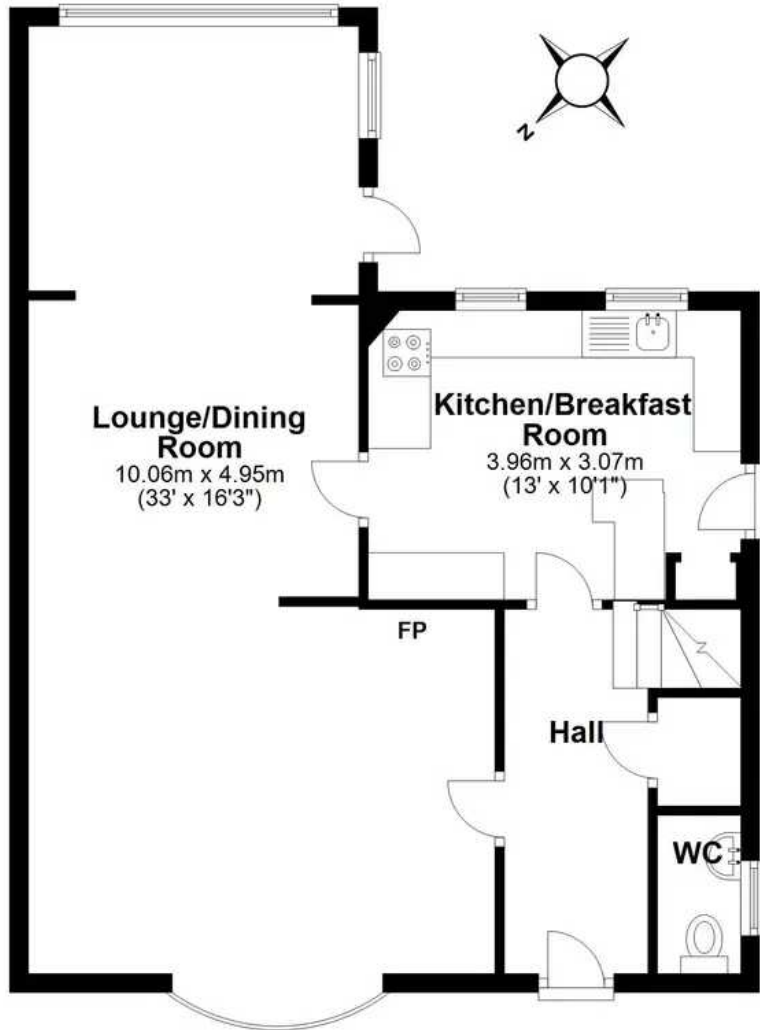
10' 2" x 7' 5" (3.10m x 2.26m)





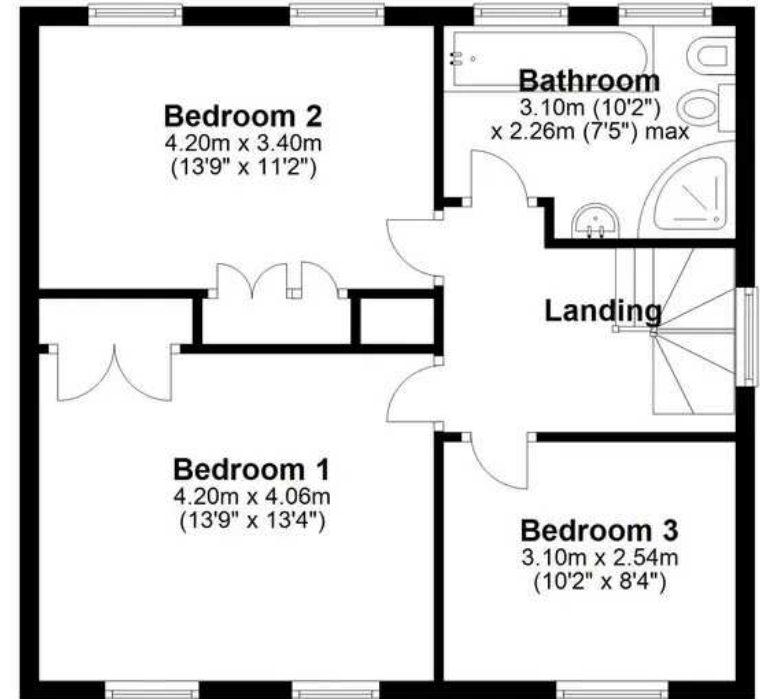
Ground Floor

Approx. 76.8 sq. metres (826.3 sq. feet)



First Floor

Approx. 51.5 sq. metres (554.1 sq. feet)



Total area: approx. 128.2 sq. metres (1380.5 sq. feet)