

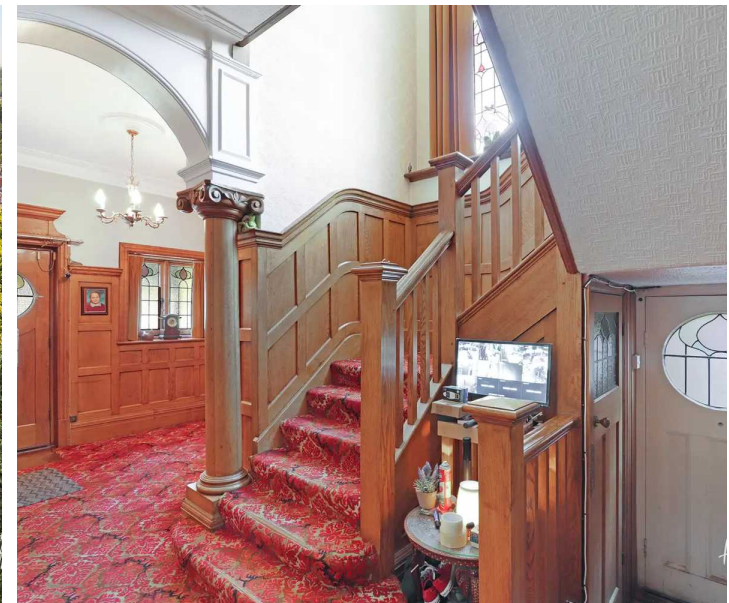
17 The Green

London, London

Council Tax band: G

Tenure: Freehold

- IMPRESSIVE EDWARDIAN DETACHED HOME
- SHORT WALK TO STATION AND HIGH STREET
- FIVE DOUBLE BEDROOMS
- LARGE RECEPTION ROOMS
- PERIOD FEATURES WITH HIGH CEILINGS
- GRAND ENTRANCE WITH OAK STAIRCASE
- VIEWS OVER THE GREEN
- LARGE ESTABLISHED GARDEN
- DETACHED GARAGE AND WORKSHOP



Entrance Hall

Reception

20' 8" x 14' 11" (6.30m x 4.54m)

Reception

19' 2" x 14' 11" (5.83m x 4.54m)

Dining Room

17' 5" x 11' 8" (5.32m x 3.55m)

Kitchen

10' 4" x 8' 3" (3.16m x 2.51m)

Pantry

WC

Conservatory

5' 1" x 13' 8" (1.55m x 4.16m)

Landing

Bedroom 1

20' 10" x 14' 6" (6.34m x 4.41m)

Bedroom 2

16' 3" x 11' 4" (4.95m x 3.46m)

Bedroom 3

13' 1" x 15' 3" (4.00m x 4.64m)

Bedroom 4

10' 2" x 11' 7" (3.10m x 3.54m)

Bathroom

7' 7" x 8' 8" (2.32m x 2.63m)

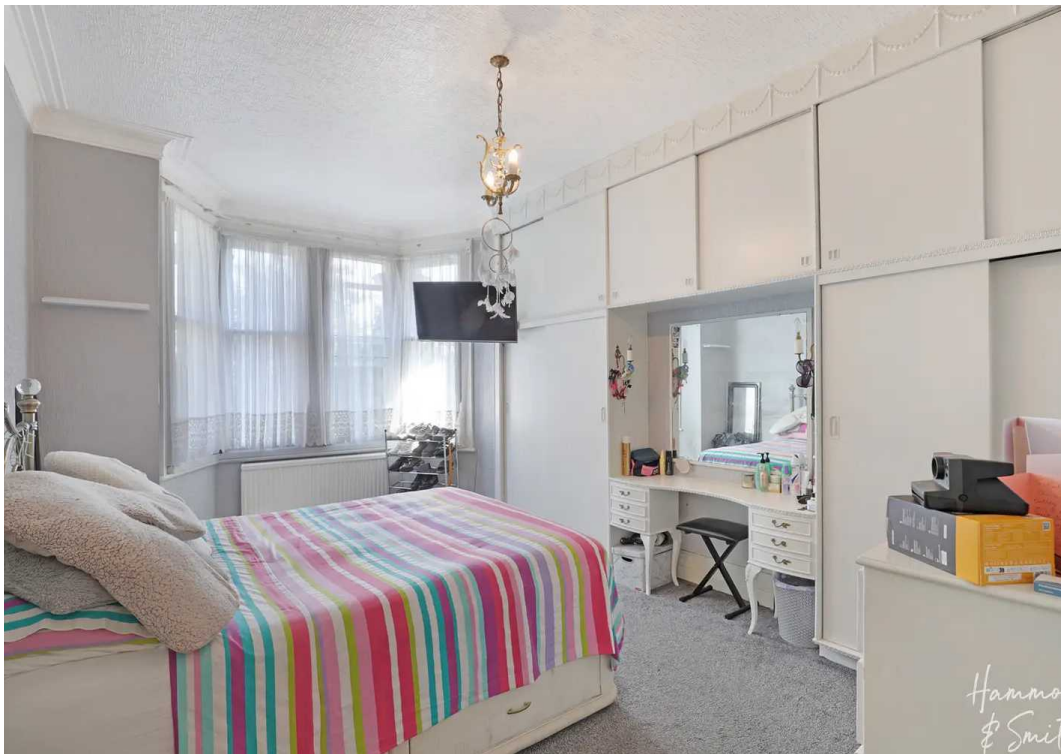
WC

Study/Loft Access

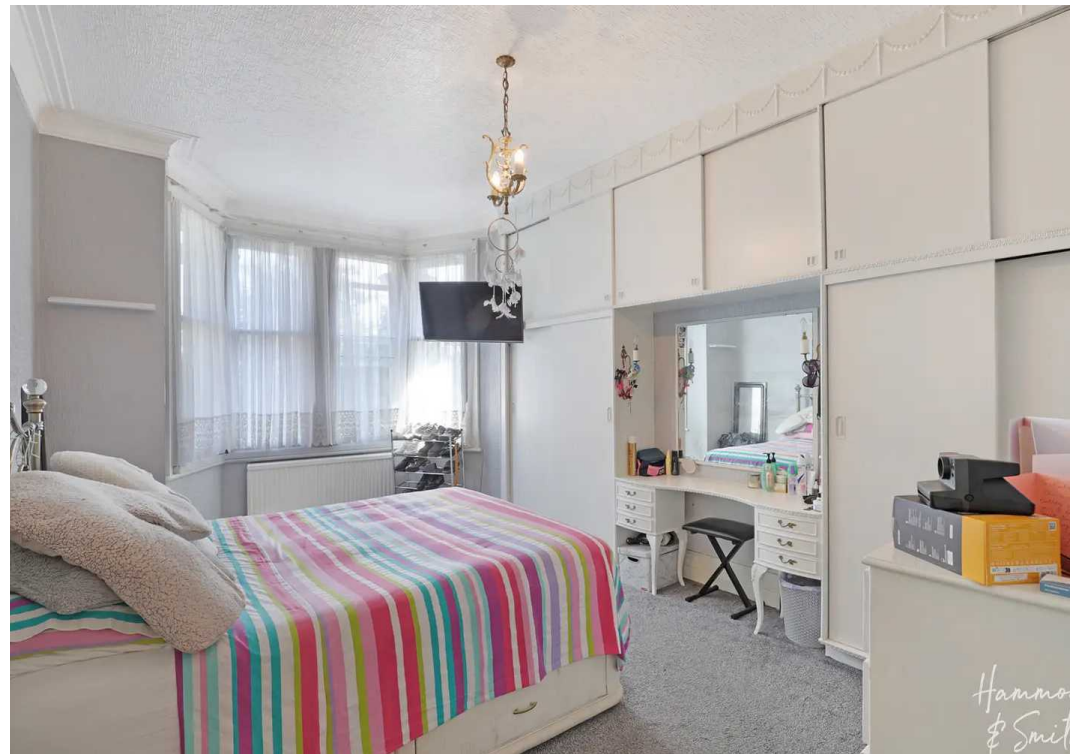
Loft Room

29' 3" x 21' 2" (8.91m x 6.44m)

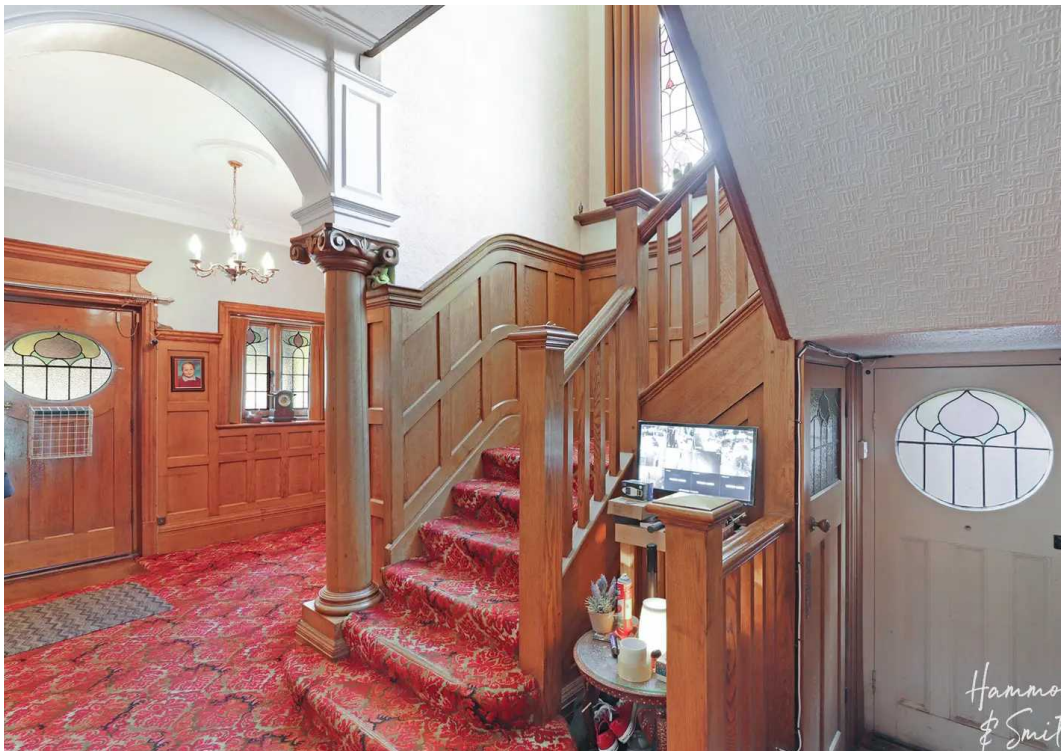




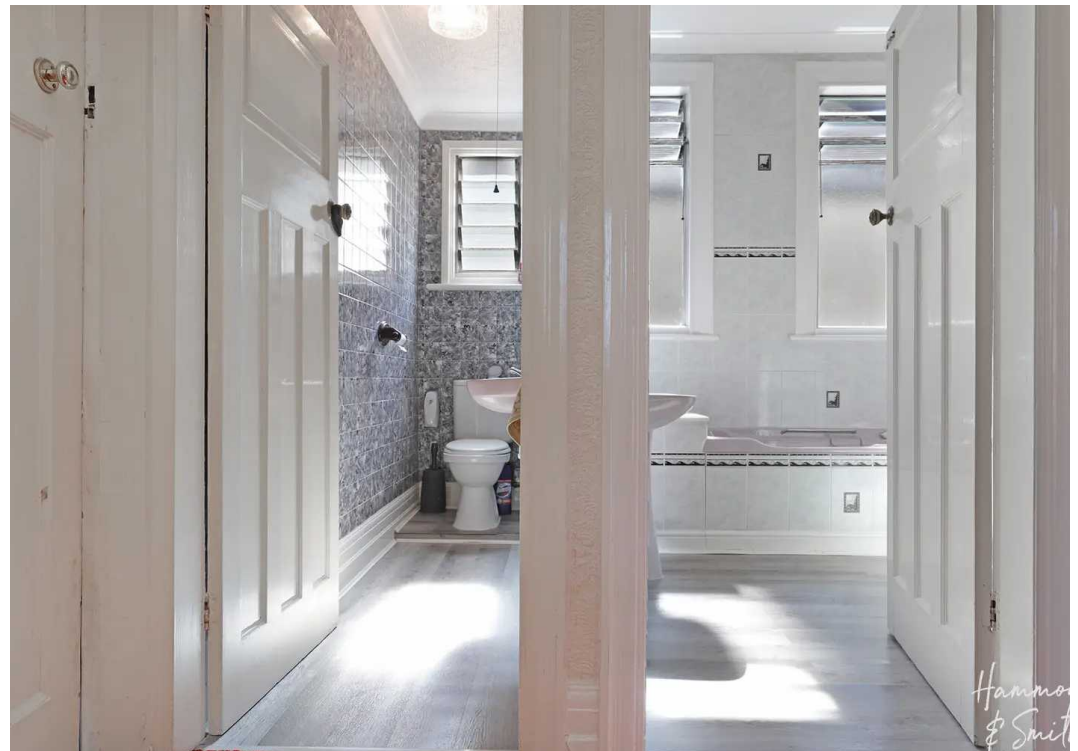
Hammon
& Smith



Hammon
& Smith



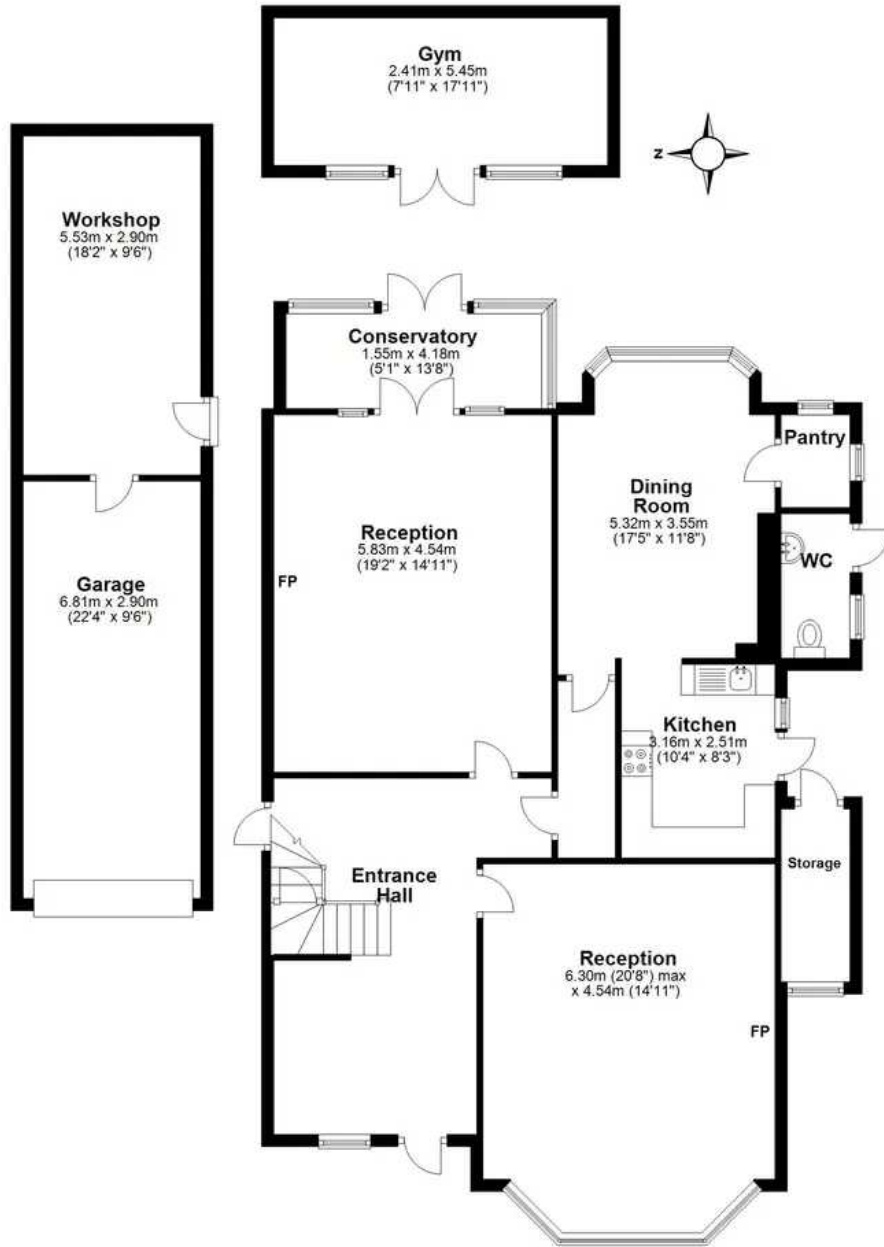
Hammon
& Smith



Hammon
& Smith

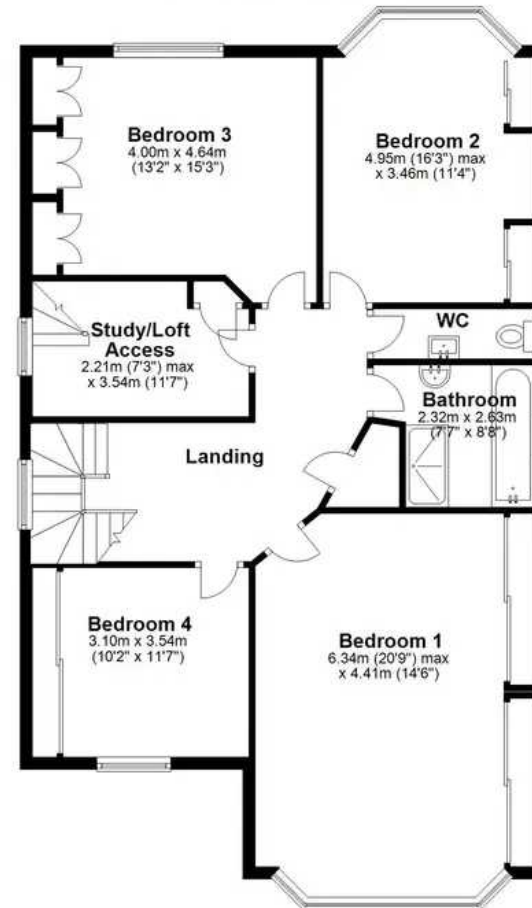
Ground Floor

Main area: approx. 117.0 sq. metres (1259.2 sq. feet)
Plus outbuildings approx. 49.2 sq. metres (529.8 sq. feet)



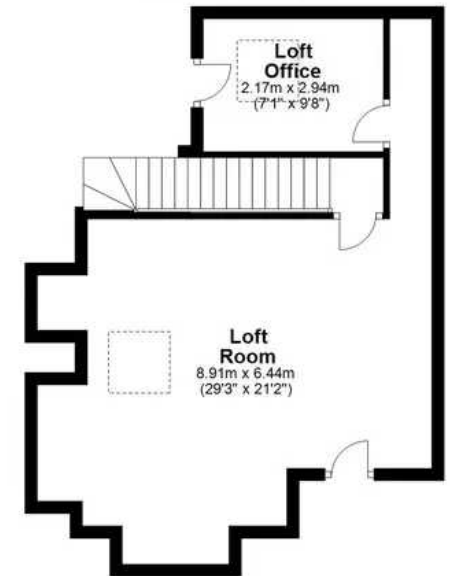
First Floor

Approx. 103.0 sq. metres (1108.9 sq. feet)



Second Floor

Main area: approx. 9.5 sq. metres (102.5 sq. feet)
Plus loft room, approx. 42.0 sq. metres (451.7 sq. feet)



Main area: Approx. 229.5 sq. metres (2470.6 sq. feet)

Plus outbuildings, approx. 49.2 sq. metres (529.8 sq. feet)
Plus loft room, approx. 42.0 sq. metres (451.7 sq. feet)