



64 The Plain, Epping

Guide Price **£675,000**





64 The Plain

Epping, Epping

A beautifully spacious chain free three bedroom, plus study, bungalow nestled along The Plain, Epping. With superb green space on your doorstep and the high street just a short walk away, this is a great place to be.

Council Tax band: C

Tenure: Freehold

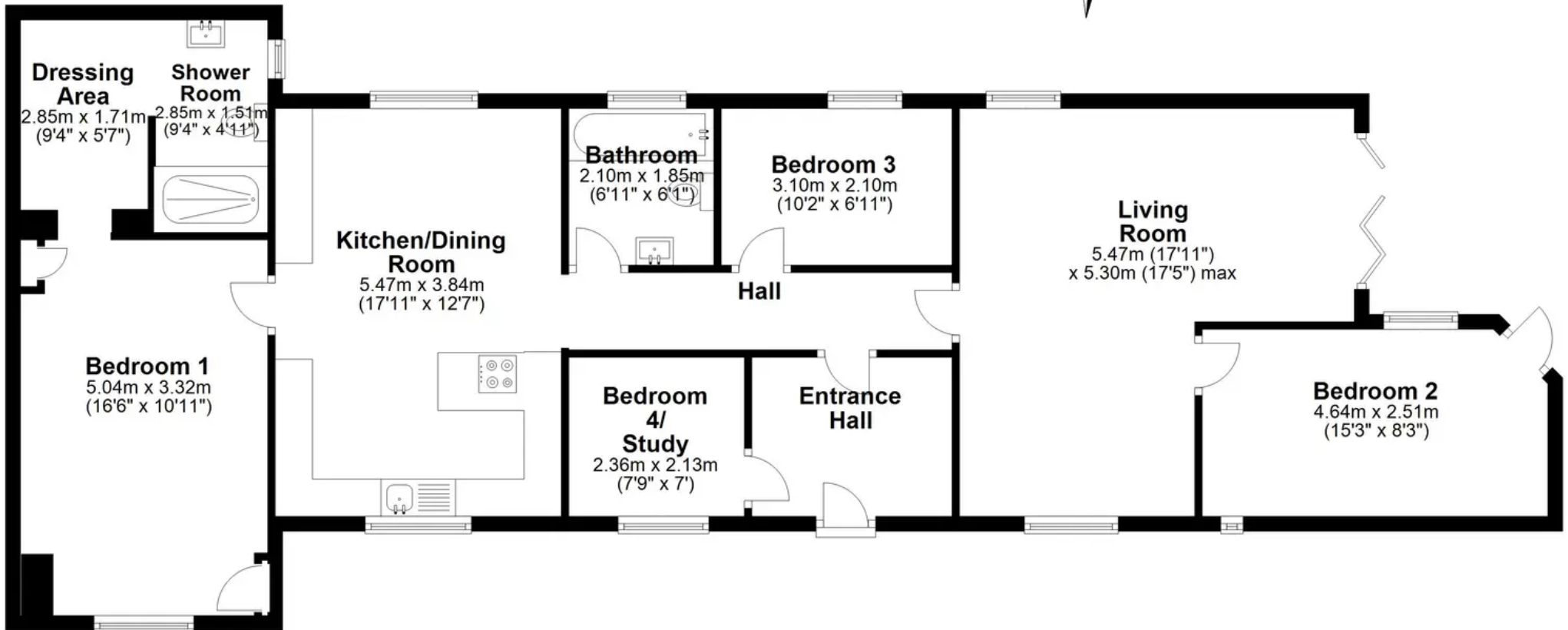
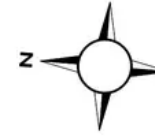
- CHAIN FREE
- THREE/FOUR BEDROOMS
- LUXURY KITCHEN/DINER
- TWO BATH/SHOWERS
- L-SHAPED LOUNGE
- PARKING AVAILABLE
- PRIVATE ROAD
- LOW MAINTENANCE REAR GARDEN





Ground Floor

Approx. 112.2 sq. metres (1208.1 sq. feet)



Total area: approx. 112.2 sq. metres (1208.1 sq. feet)