



Flat 4, Blake House, 39 Oakley Court Hillyfields

Guide Price £340,000





Flat 4

Blake House, Loughton

Council Tax band: C

Tenure: Leasehold

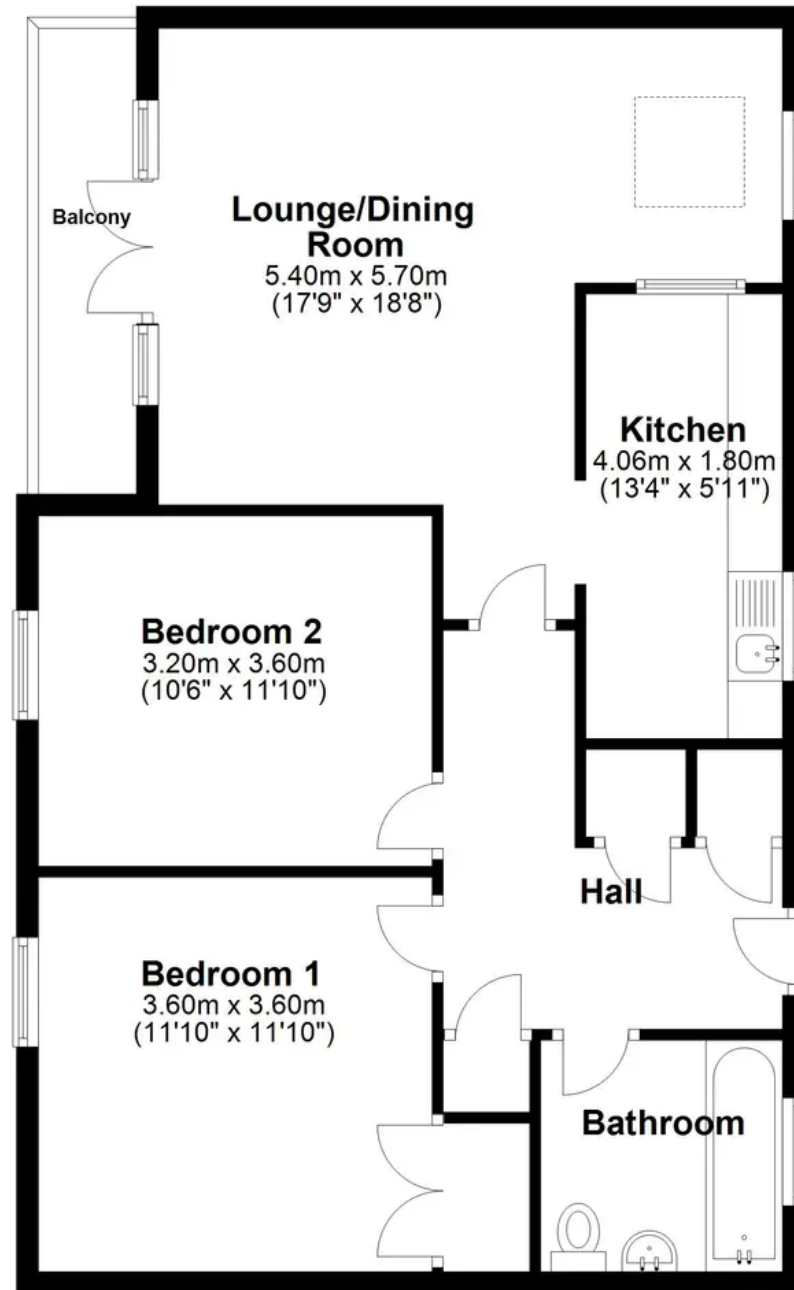
- CHAIN FREE
- CLOSE TO SHOPS
- TRANSPORT LINKS NEAR BY
- OVERLOOKING THE GREEN
- ALLOCATED PARKING
- VAULTED CEILING IN LIVING AREA
- GAS CENTRAL HEATING
- IDEAL FIRST TIME BUY OR INVESTMENT
- FIRST FLOOR





First Floor

Approx. 72.3 sq. metres (778.3 sq. feet)



Total area: approx. 72.3 sq. metres (778.3 sq. feet)