

18 Barnfield

Epping, Epping

Council Tax band: F

Tenure: Freehold

- LARGE FAMILY HOME
- GARAGE AND OFF ROAD PARKING
- OPEN PLAN KITCHEN DINER LOUNGE
- SEPARATE LOUNGE
- DOWNSTAIRS WC
- UTILITY ROOM
- FIVE DOUBLE BEDROOMS
- STUDY
- OVER 2000 SQFT
- NEFF APPLIANCES



Hammond
& Smith

Hall

Living Room

15' 2" x 11' 0" (4.62m x 3.35m)

Kitchen/Dining Room

26' 7" x 20' 3" (8.10m x 6.16m)

Utility Room

8' 8" x 6' 0" (2.63m x 1.83m)

WC

Bathroom

9' 7" x 8' 7" (2.91m x 2.62m)

Bedroom 3

17' 2" x 8' 7" (5.23m x 2.62m)

Bedroom 4

14' 10" x 10' 5" (4.52m x 3.18m)

Bedroom 5

13' 10" x 10' 5" (4.22m x 3.18m)

Study/Bedroom 6

6' 9" x 6' 1" (2.06m x 1.85m)

Bedroom 1

15' 1" x 12' 1" (4.60m x 3.69m)

Bedroom 2

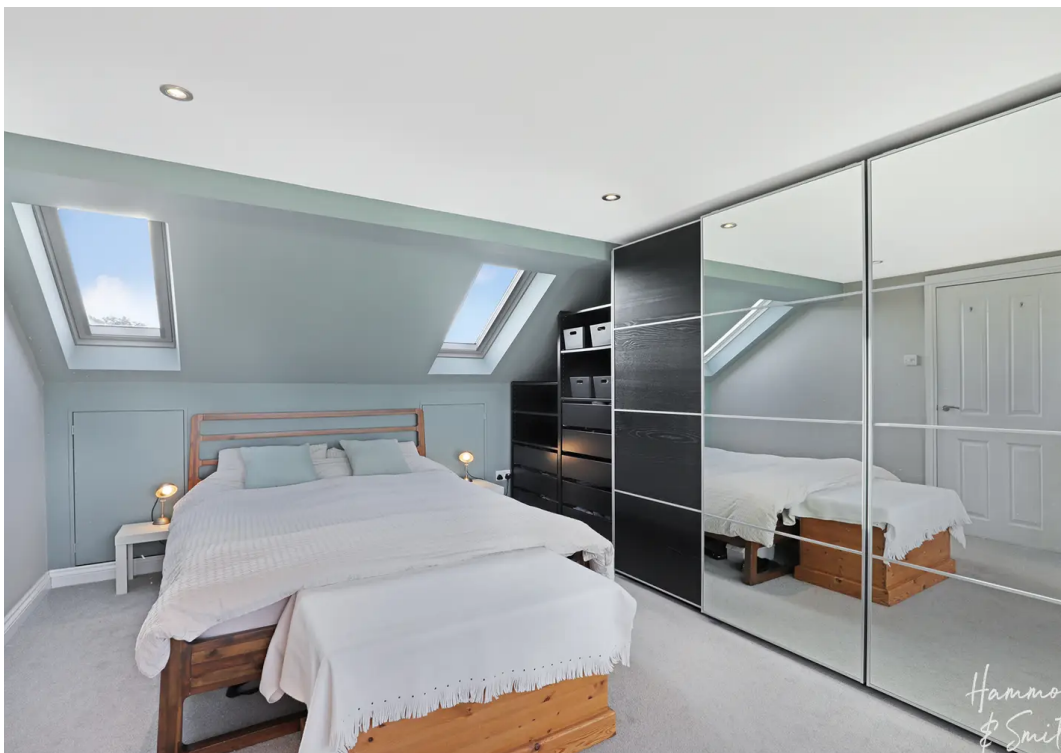
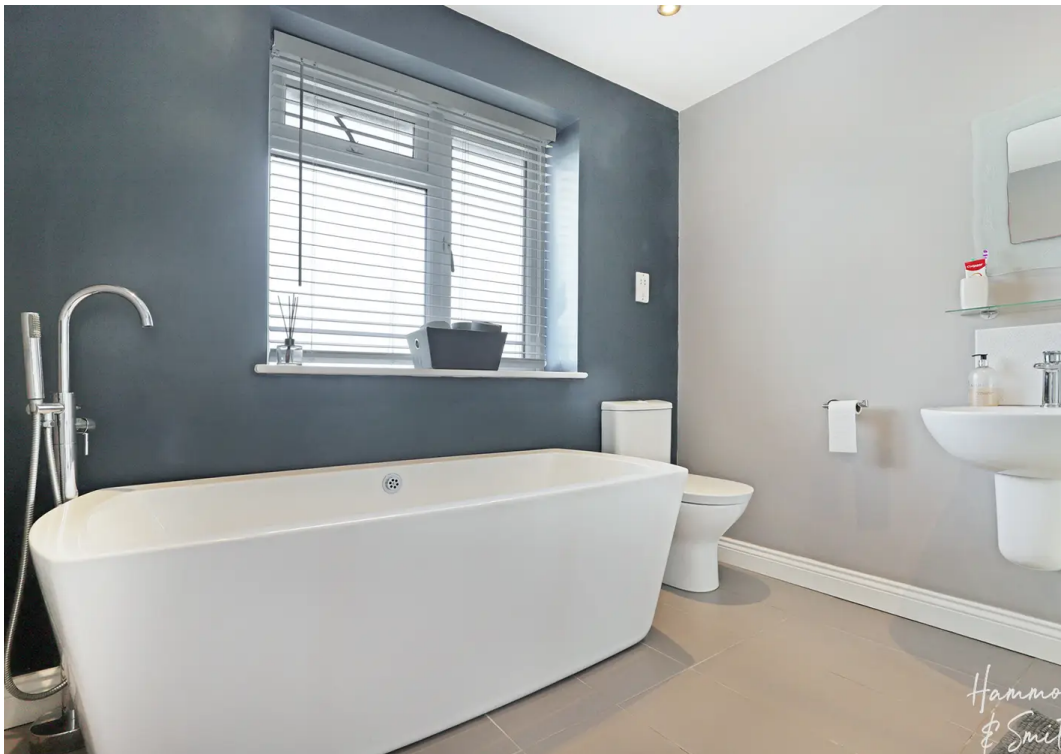
14' 2" x 9' 3" (4.31m x 2.83m)

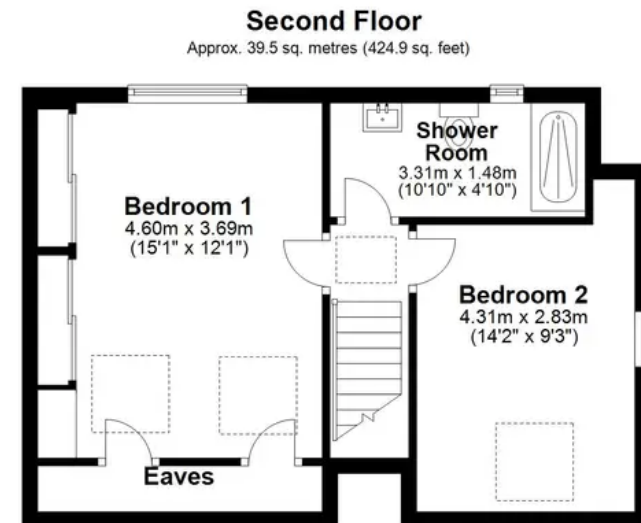
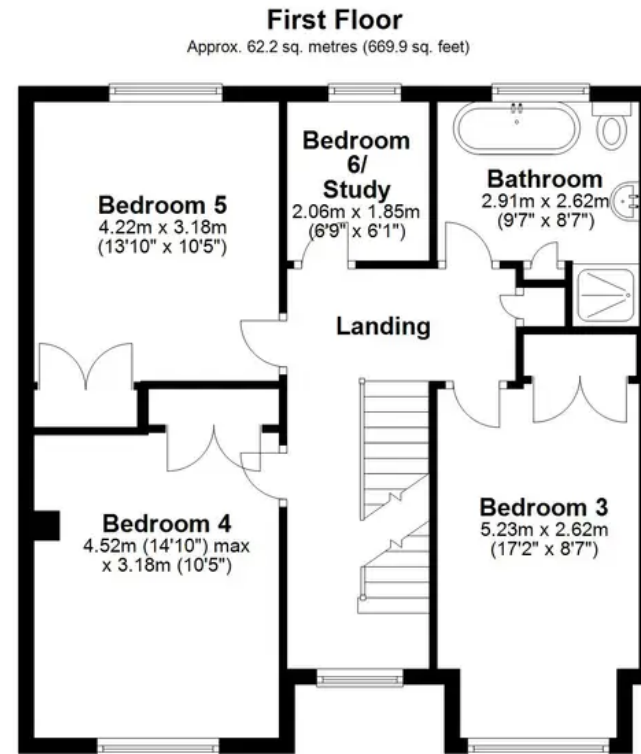
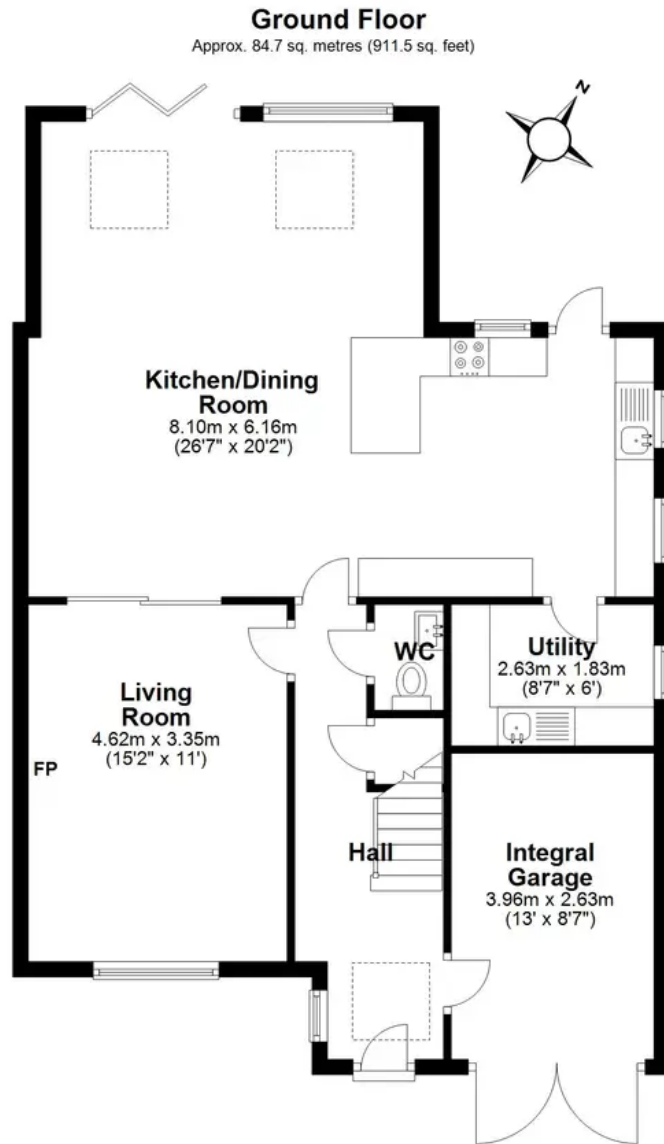
Shower Room

Garage

13' 0" x 8' 8" (3.96m x 2.63m)







Total area: approx. 186.4 sq. metres (2006.3 sq. feet)