



# Theydon Grove, Epping

Guide Price £875,000

Hammond





## Theydon Grove

Epping, Essex

Council Tax band: F

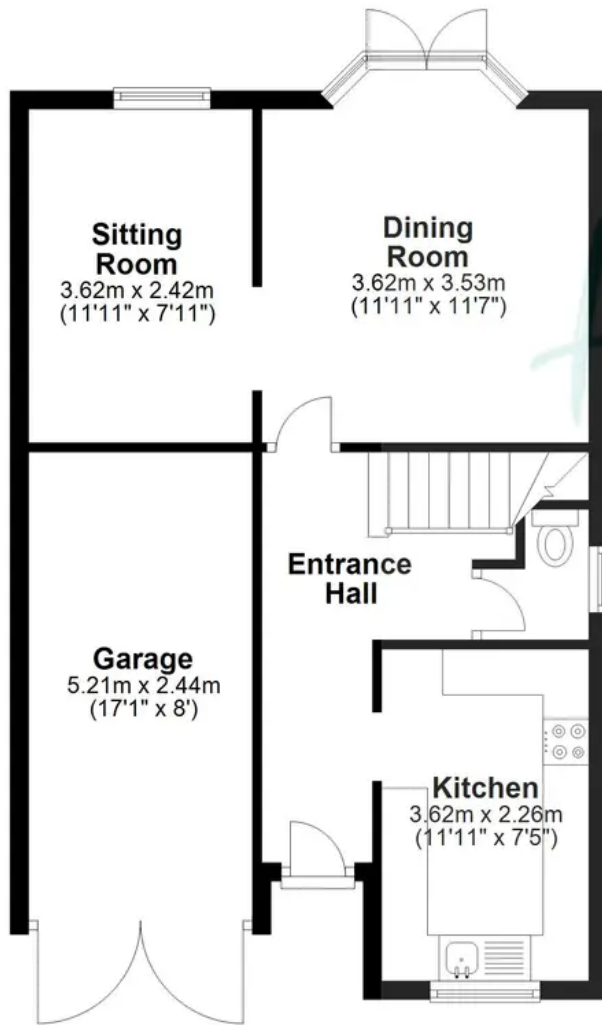
Tenure: Freehold

- RARELY AVAILABLE SEMI DETACHED
- DRIVEWAY PARKING
- GARAGE
- SUPERB LOCATION CLOSE TO HIGH STREET & CENTRAL LINE STATION
- MASTER ENSUITE & DRESSING AREA
- SIDE ACCESS





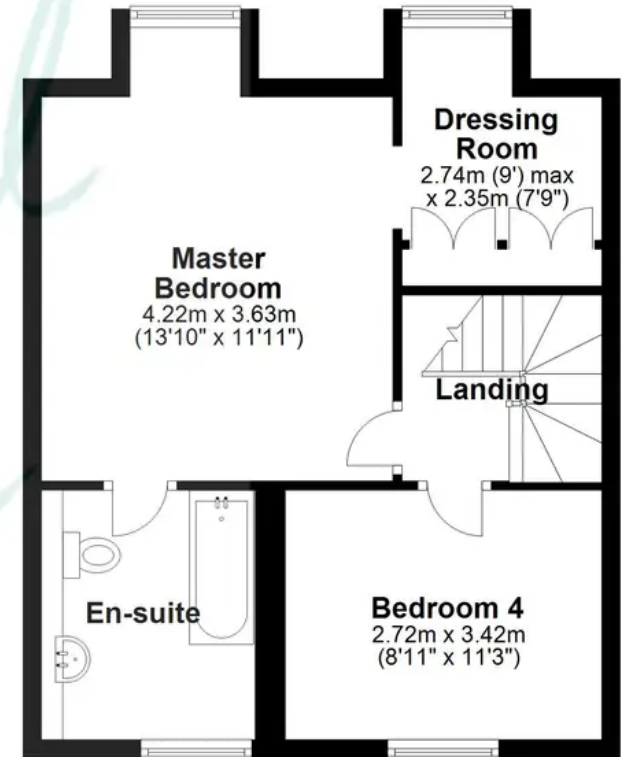
### Ground Floor



### First Floor



### Second Floor



Total area: approx. 157.6 sq. metres (1696.4 sq. feet)

Floorplans are provided for guidance only. They are not to scale & must not form any part of a legal contract or be reproduced  
Plan produced using PlanUp.