

# 120 Queens Road

North Weald, Epping

Council Tax band: C

Tenure: Freehold

- TWO DOUBLE BEDROOMS
- SEPARATE UTILITY
- GAS CENTRAL HEATING
- MODERN BATHROOM
- DOUBLE GLAZED
- GOOD SIZED REAR GARDEN





**Front Door**

**Entrance Hallway**

**Lounge/Dining Room**

15' 6" x 11' 0" (4.72m x 3.35m)

**Kitchen/Breakfast Room**

12' 2" x 10' 3" (3.71m x 3.12m)

**Utility Room**

8' 11" x 4' 11" (2.71m x 1.51m)

**Stairs Leading To**

**Bedroom One**

15' 6" x 9' 0" (4.72m x 2.74m)

**Bedroom Two**

11' 0" x 9' 8" (3.36m x 2.94m)

**Family Bathroom**

5' 11" x 5' 6" (1.80m x 1.68m)



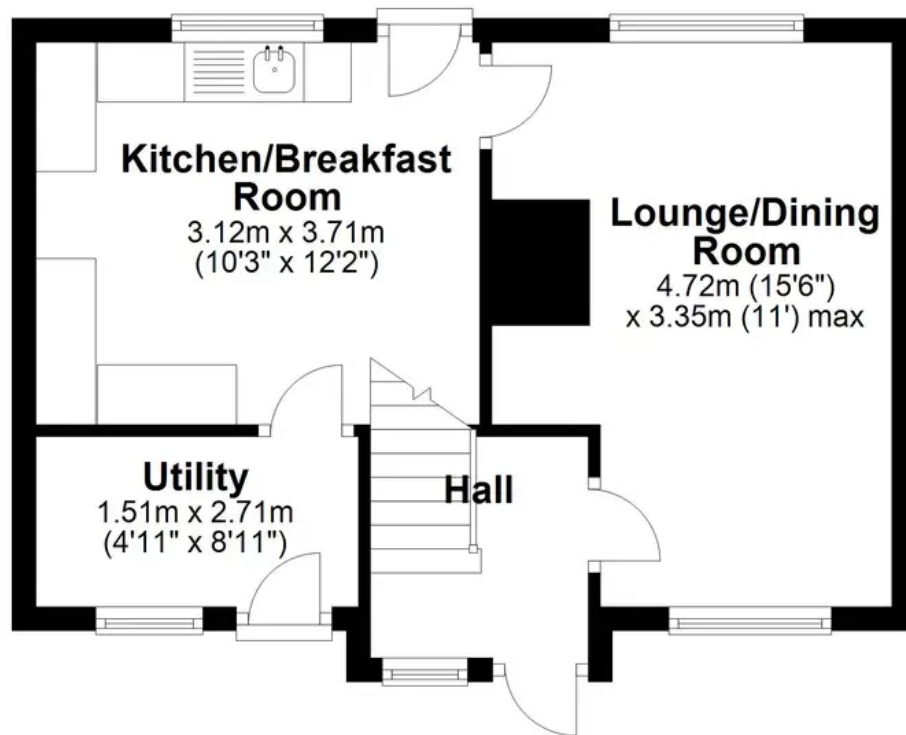






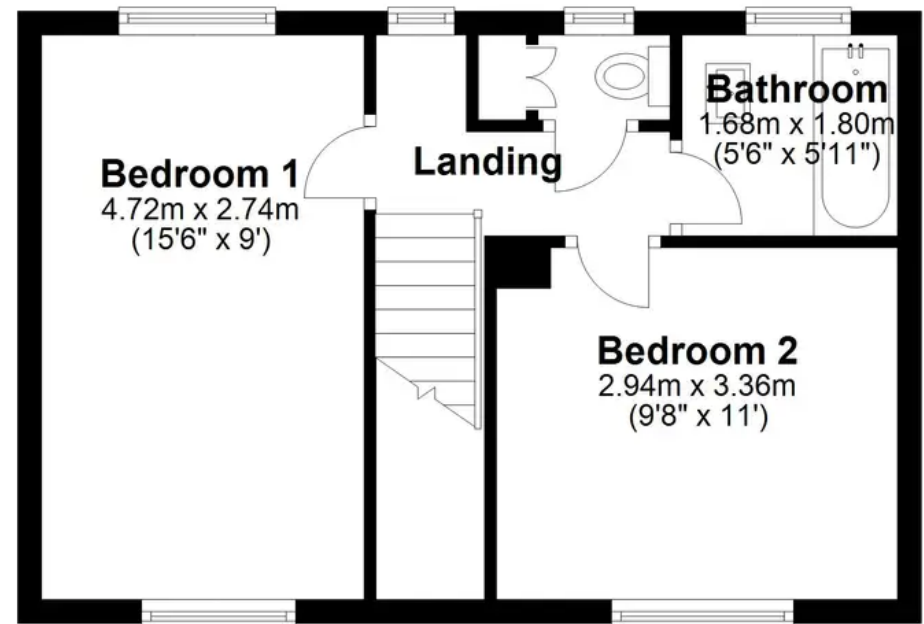
## Ground Floor

Approx. 34.6 sq. metres (372.0 sq. feet)



## First Floor

Approx. 34.0 sq. metres (366.3 sq. feet)



Total area: approx. 68.6 sq. metres (738.3 sq. feet)