

5 Fiddlers Hamlet

, Epping, CM16 7PG

Offers Over £775,000

Council Tax band: D

Tenure: Freehold

- VIEWS ACROSS FARMLAND
- NEWLY REFURBISHED
- CHARACTER FEATURES
- THREE BEDROOMS
- SEPARATE UTILITY ROOM
- MODERN DECOR THROUGHOUT
- OFF STREET PARKING
- DOWNSTAIRS WC



Front Door

Lobby Area

Living Room

25' 2" x 24' 8" (7.66m x 7.52m)

Kitchen/ Dining Room

25' 2" x 10' 8" (7.66m x 3.24m)

Utility Room

7' 4" x 6' 4" (2.24m x 1.92m)

Downstairs WC

Stairs Leading To

Landing

Bedroom

14' 2" x 12' 0" (4.33m x 3.65m)

Bedroom

12' 7" x 11' 9" (3.84m x 3.59m)

Shower Room

Bedroom

13' 1" x 7' 9" (3.98m x 2.36m)

3.98m x 2.36m

Family Bathroom

6' 7" x 6' 6" (2.00m x 1.98m)

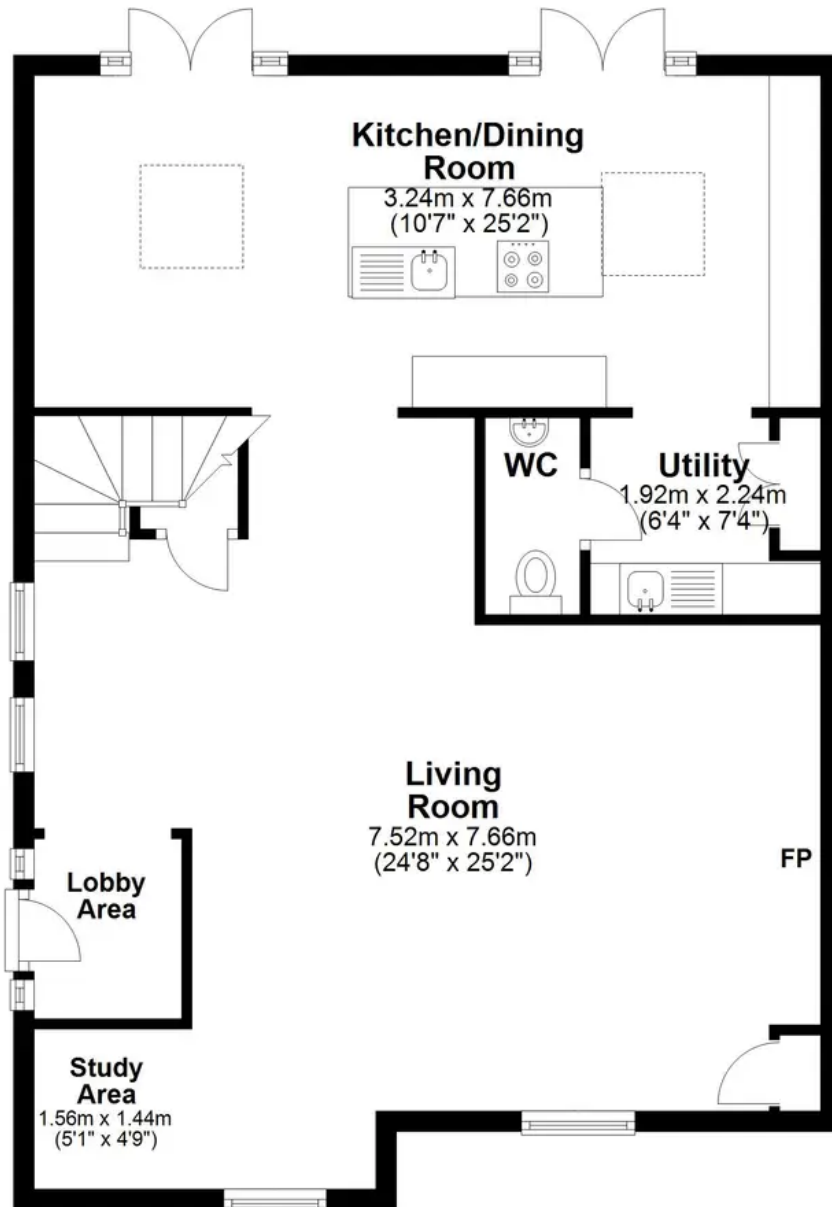






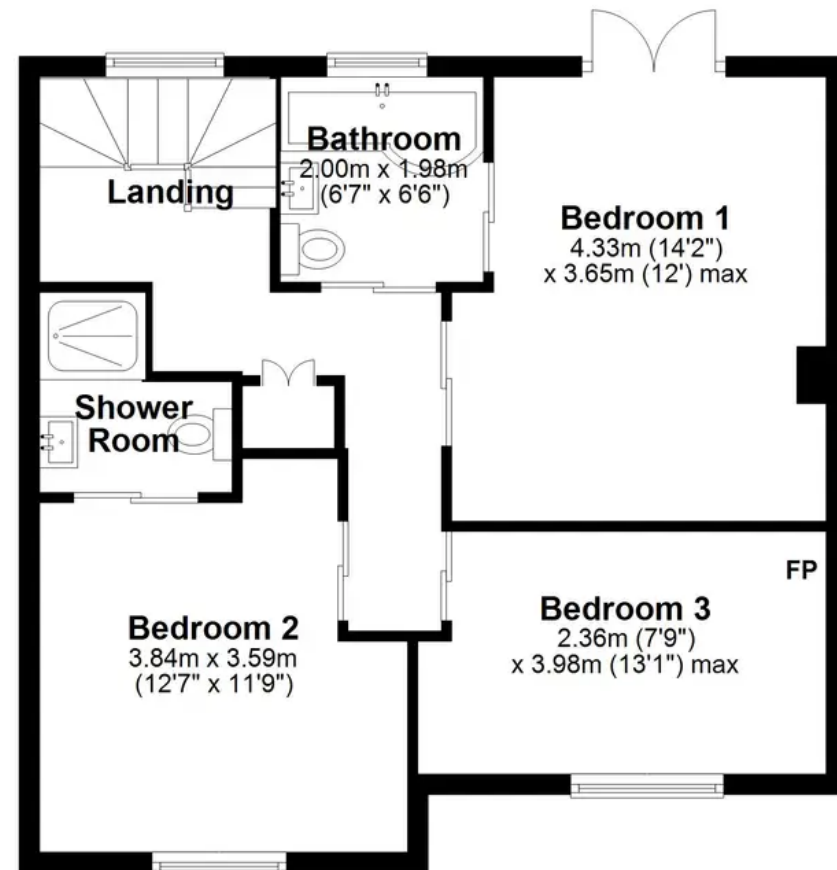
Ground Floor

Approx. 79.7 sq. metres (857.6 sq. feet)



First Floor

Approx. 54.5 sq. metres (587.0 sq. feet)



Total area: approx. 134.2 sq. metres (1444.6 sq. feet)