



4 Woodpecker Lane, Newhall

In Excess of **£750,000**





4 Woodpecker Lane

Newhall, Harlow

Open house 15th July by appointment only, found on a quiet street moments from the tranquil canopy of Barnsley Wood, this gorgeous four bedroom double-fronted home is a real beaut!

Council Tax band: G

Tenure: Freehold

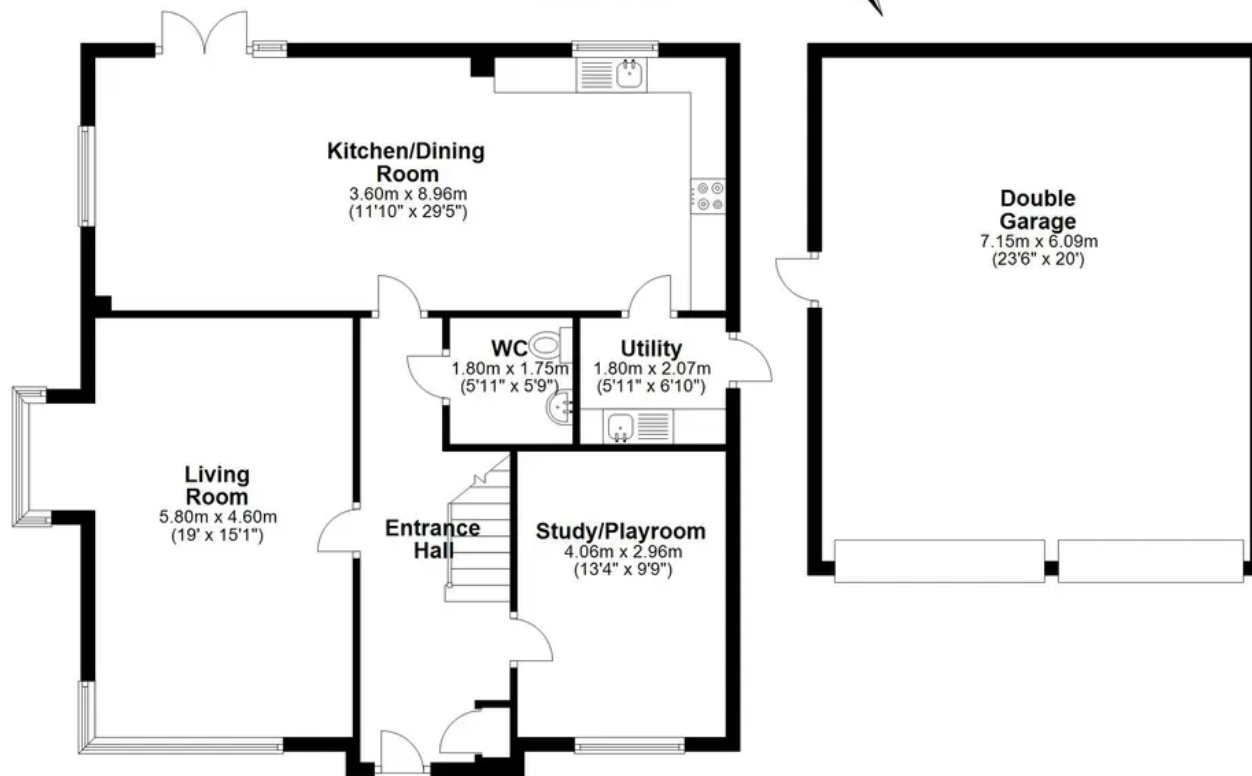
- FOUR DOUBLE BEDROOMS
- DOUBLE GARAGE
- MASTER SUITE WITH BALCONY
- IN EXCESS OF 1800 SQFT
- OVERLOOKING WOODLAND
- BUILT IN 2017
- SPACIOUS FAMILY HOME
- UTILITY ROOM
- EPC RATING B





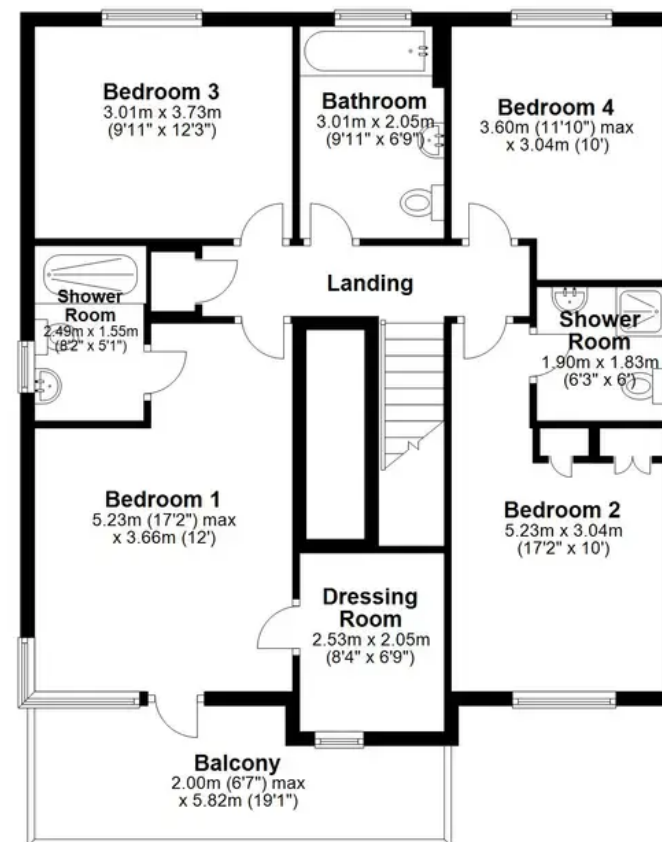
Ground Floor

Main area: approx. 88.6 sq. metres (954.1 sq. feet)
Plus garages, approx. 43.5 sq. metres (466.7 sq. feet)



First Floor

Approx. 81.8 sq. metres (880.9 sq. feet)



Main area: Approx. 170.5 sq. metres (1835.1 sq. feet)
Plus garages, approx. 43.5 sq. metres (466.7 sq. feet)