

22 Princes Close

North Weald, Epping

Council Tax band: D

Tenure: Freehold

- KITCHEN/BREAKFAST ROOM
- LARGE ESTABLISHED GARDEN
- POTENTIAL TO EXTEND (STP)
- GARDEN ROOM
- GARAGE
- OFF ROAD PARKING
- FLEXIBLE LIVING
- LOUNGE/DINING ROOM
- CUL DE SAC



Porch

Hallway

Reception/Bedroom 4

10' 3" x 11' 5" (3.12m x 3.48m)

Shower Room

7' 1" x 4' 2" (2.17m x 1.27m)

Kitchen/Breakfast Room

19' 9" x 6' 11" (6.02m x 2.12m)

Lounge/Dining Room

23' 0" x 11' 5" (7.00m x 3.48m)

Landing

Bedroom 1

12' 3" x 11' 6" (3.74m x 3.50m)

Bedroom 2

14' 7" x 6' 11" (4.45m x 2.10m)

Bedroom 3

6' 7" x 11' 6" (2.01m x 3.50m)

Bathroom

10' 1" x 6' 11" (3.07m x 2.10m)





Hammo
& Smit



Hammo
& Smit



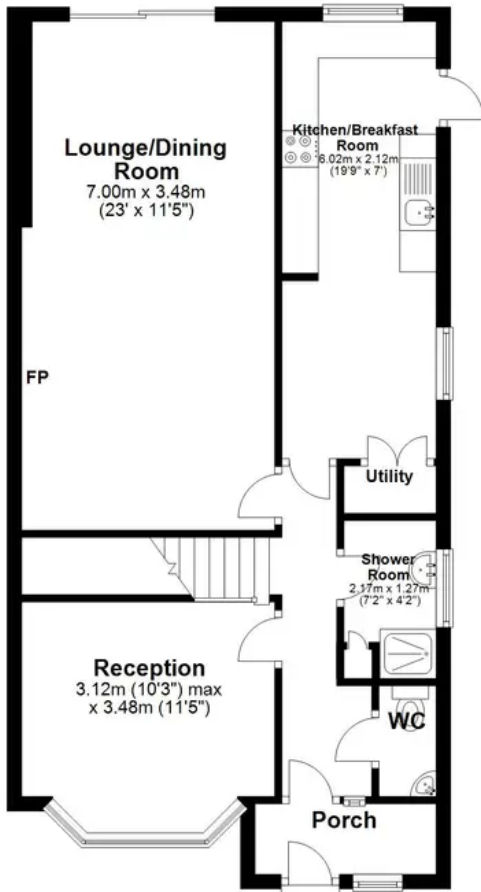
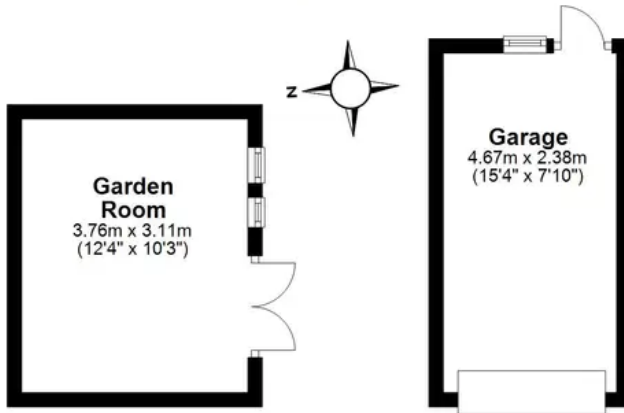
Hammo
& Smit



Hammo
& Smit

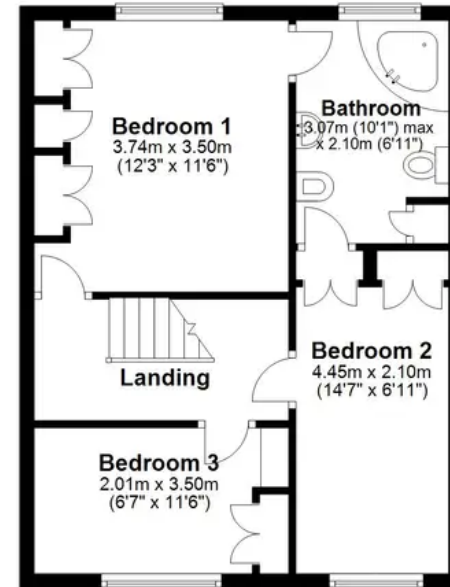
Ground Floor

Main area: approx. 75.0 sq. metres (807.8 sq. feet)
Plus outbuildings, approx. 11.7 sq. metres (126.1 sq. feet)



First Floor

Approx. 43.5 sq. metres (468.2 sq. feet)



Main area: Approx. 118.5 sq. metres (1276.0 sq. feet)
Plus outbuildings, approx. 11.7 sq. metres (126.1 sq. feet)