



*Hammond
& Co. #*

100 High Street, Epping

Guide Price £800,000





100 High Street

Epping, Epping

****£800,000 - £825,000**** Bursting with character, this gorgeous two bedroom Grade II listed home with separate barn is something very special.

Set over three floors and dating to the 1600s, you're moments away from all the buzz Epping has to offer.

Council Tax band: E

Tenure: Freehold

- SEPERATE GARAGE
- HIGH STREET LOCATION
- OUTDOOR BARN / GARDEN ROOM
- PERIOD PROPERTY
- PRIVATE REAR GARDEN
- GRADE II LISTED
- CHARACTER FEATURES





*Hammon
& Smith*

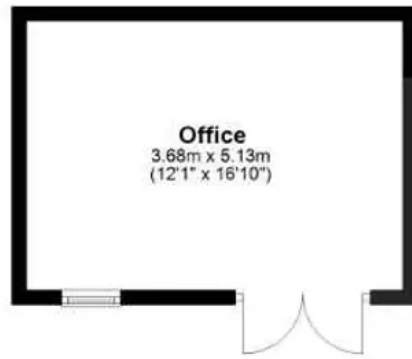


*Hammon
& Smith*

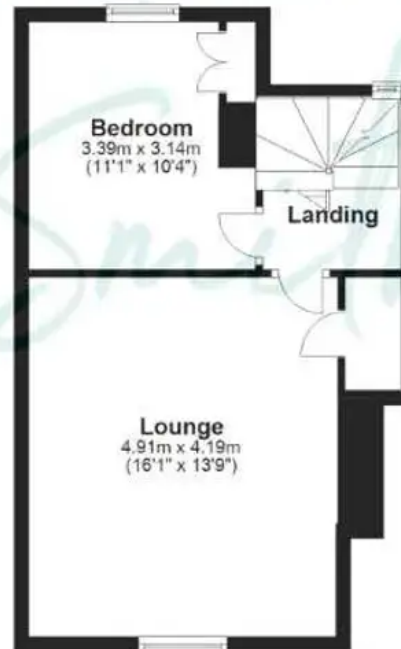


*Hammon
& Smith*

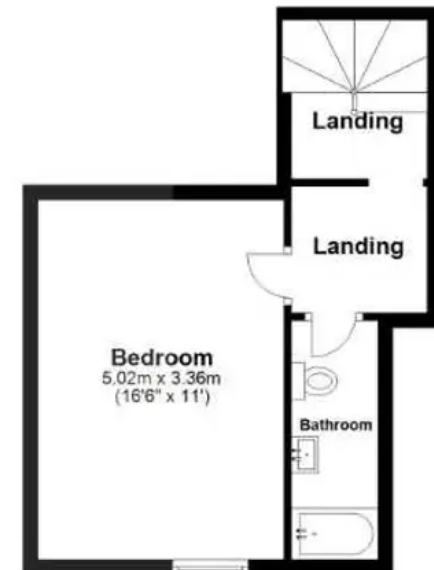
Ground Floor



First Floor



Second Floor



Total area: approx. 137.2 sq. metres (1476.3 sq. feet)

Floorplans are provided for guidance only. They are not to scale & must not form any part of a legal contract or be reproduced
Plan produced using PlanUp.