



104 Beaconfield Road, Epping

Guide Price **£550,000**





104 Beaconfield Road

Epping, Epping

A three bedroom semi-detached home in the heart of Epping ready to put your own stamp on.
Council Tax band: D

Tenure: Freehold

- THREE BEDROOMS
- DOWNSTAIRS SHOWER ROOM
- SHORT WALK TO HIGH STREET
- OFF STREET PARKING FOR TWO CARS
- CONSERVATORY
- GAS CENTRAL HEATING
- CLOSE TO LOCAL SCHOOLS
- GENEROUS STORAGE

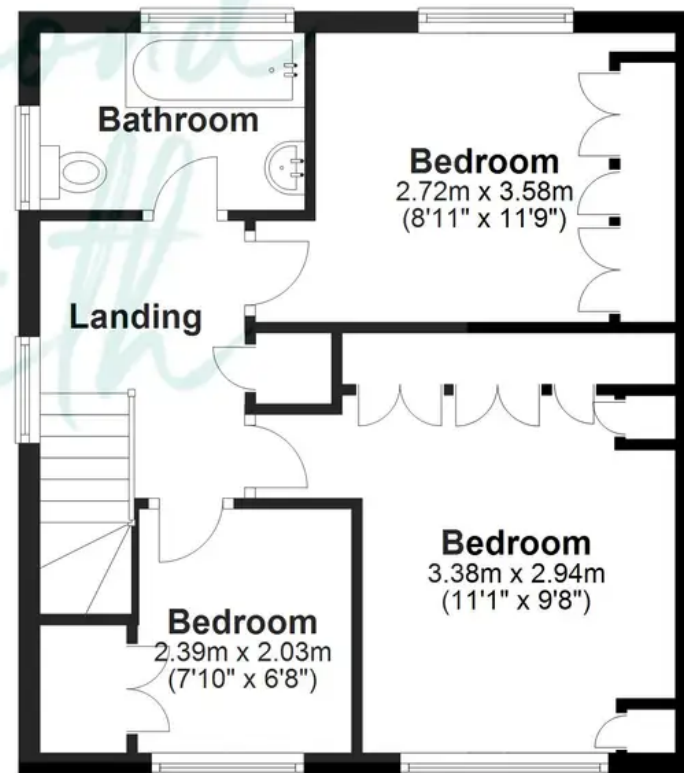




Ground Floor



First Floor



Total area: approx. 89.9 sq. metres (968.0 sq. feet)

Floorplans are provided for guidance only. They are not to scale & must not form any part of a legal contract or be reproduced
Plan produced using PlanUp.