

1 The Mews Crows Road

, Epping

Tenure: Freehold

- 10 YEAR NEW HOME WARRANTY
- SOLAR PANELS
- UNDERFLOOR HEATING
- PRIME EPPING LOCATION
- EN-SUITE TO MASTER BEDROOM
- OFF ROAD PARKING
- INTEGRATED KITCHEN
- AIR SOURCE HEAT PUMPS



Entrance Hall

Kitchen/ Lounge

Open Plan Living

Bedroom

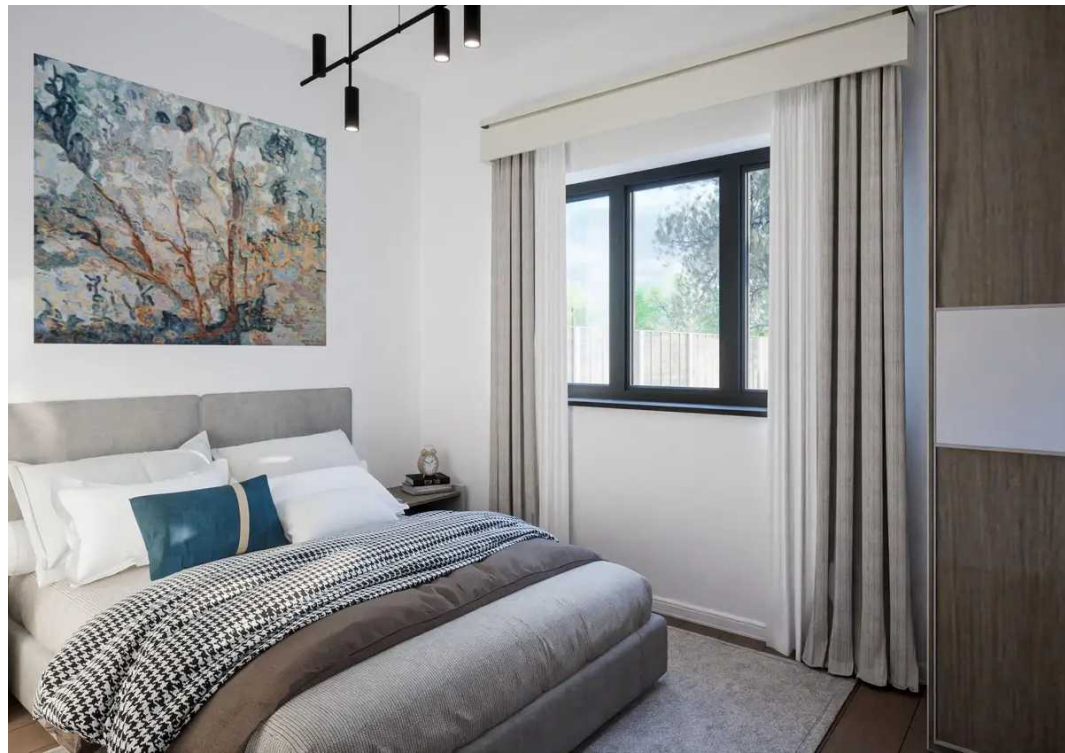
En-suite

Bedroom

Bedroom

Bathroom





Ground Floor



Floorplans are provided for guidance only. They are not to scale & must not form any part of a legal contract or be reproduced
Plan produced using PlanUp.