

2 The Mews Crows Road

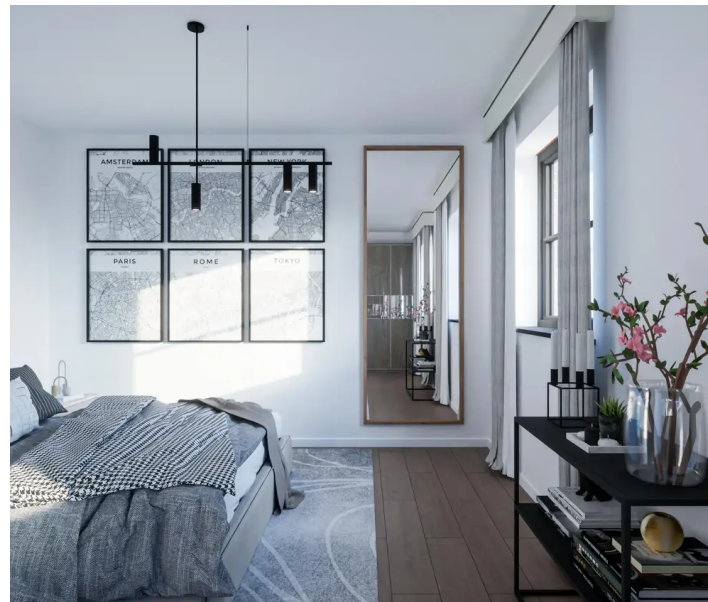
, Epping

Tenure: Freehold

- 10 YEAR NEW HOME WARRANTY
- SOLAR PANELS
- PRIME TOWN CENTRE LOCATION
- LUXURIOUS BATHROOMS
- UNDERFLOOR HEATING
- INTEGRATED KITCHEN
- OFF ROAD PARKING
- AIR SOURCE HEAT PUMPS

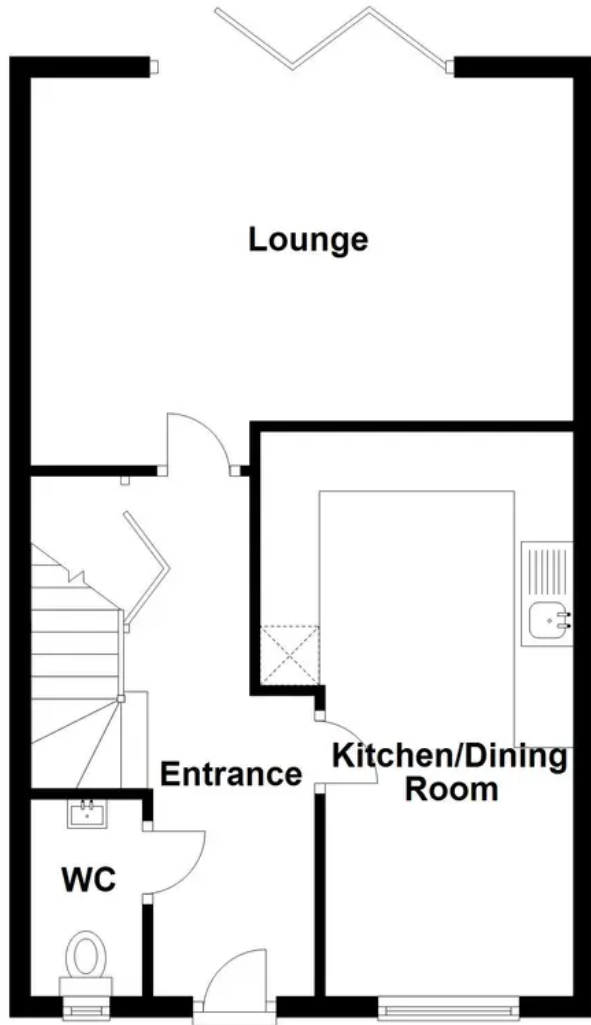


- Entrance Hall
- Lounge
- Kitchen/ Diner
- Downstairs Wc
- First Floor
- Bedroom
- Bedroom
- Bedroom
- Bathroom
- Master Bedroom
- En-suite

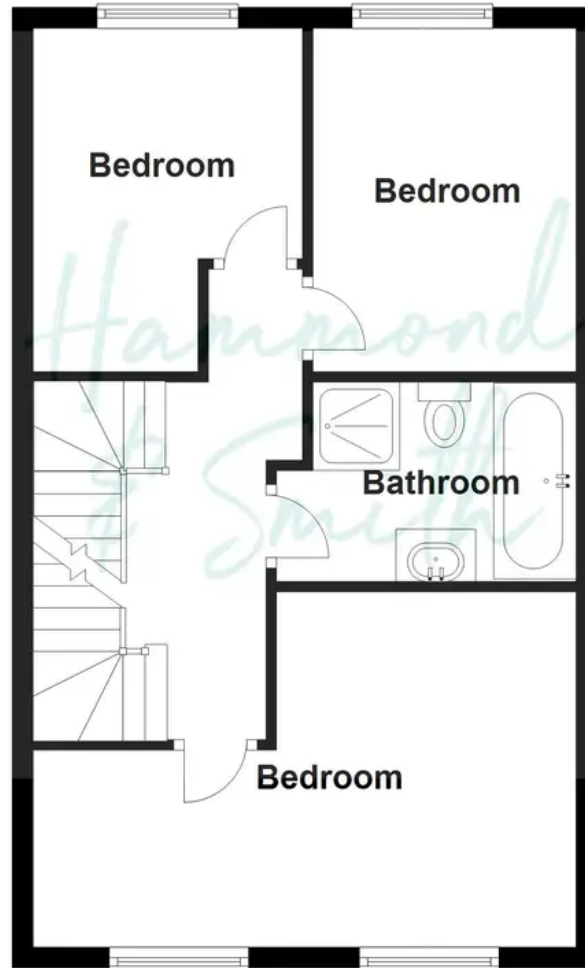




Ground Floor



First Floor



Second Floor

