

40 The Orchards

Epping, Epping

Tenure: Freehold

- OFF ROAD PARKING AND GARAGE
- POTENTIAL TO EXTEND
- TWO DOUBLE BEDROOMS
- QUIET CUL-DE-SAC
- FANTASTIC WALKS ACROSS ESSEX WAY
- SHORT WALK TO STATION
- FANTASTIC VIEWS TO REAR
- GREAT SIZE GARDEN



Entrance Hall

Living Room

12' 1" x 14' 11" (3.68m x 4.54m)

Dining Room

9' 1" x 8' 7" (2.78m x 2.62m)

Kitchen

11' 12" x 8' 9" (3.65m x 2.66m)

Bedroom One

11' 12" x 13' 9" (3.65m x 4.18m)

Bedroom Two

11' 6" x 10' 7" (3.5m x 3.22m)

Bathroom

4' 8" x 5' 7" (1.42m x 1.71m)

Wc

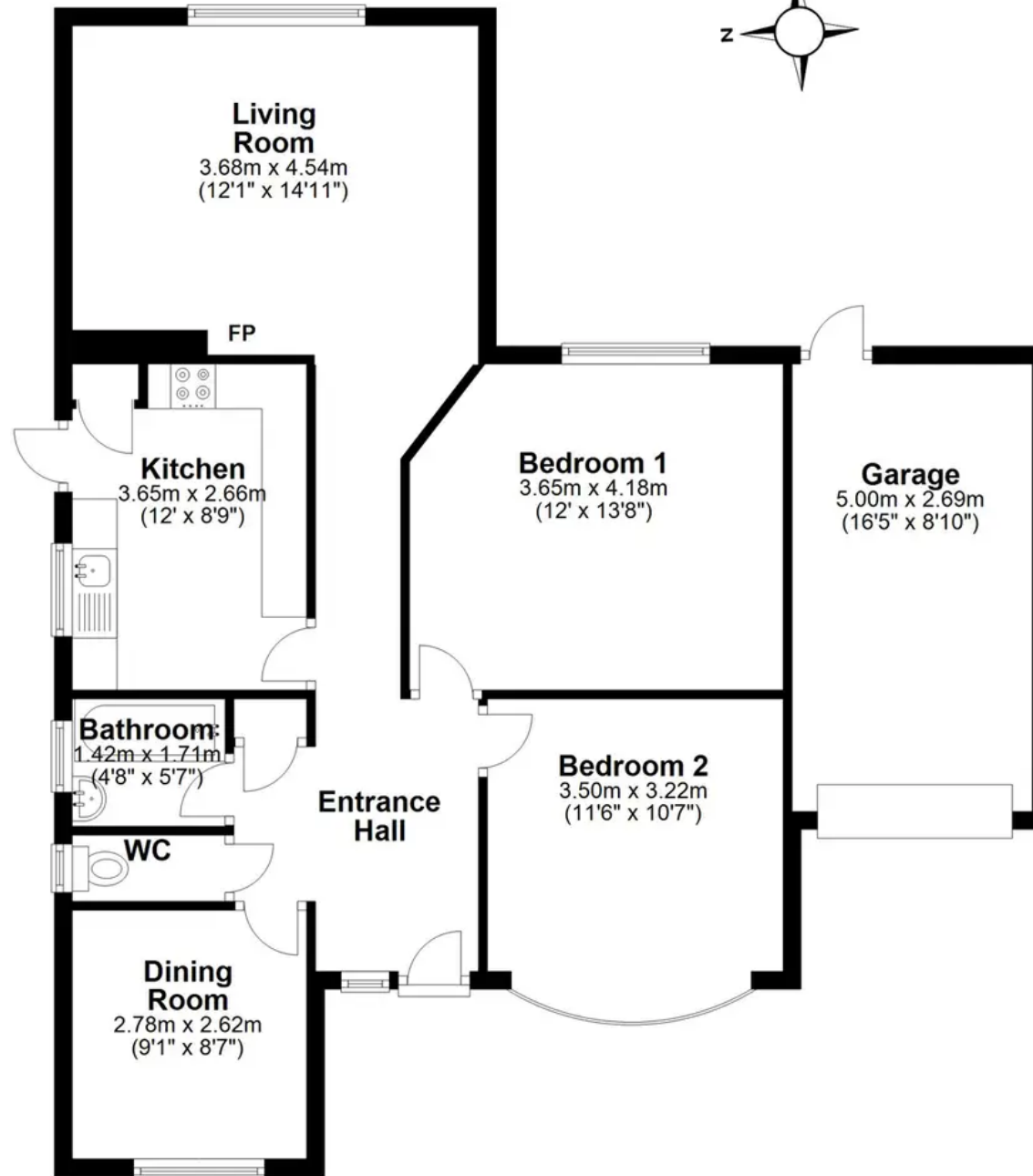
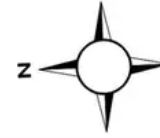
1' 8" x 5' 7" (0.5m x 1.71m)





Ground Floor

Approx. 90.8 sq. metres (977.7 sq. feet)



Total area: approx. 90.8 sq. metres (977.7 sq. feet)