



**Oak Piece, North Weald, CM16**

£525,000 guide



# Property Description



## Key Features

- ✓ POTENTIAL TO EXTEND
- ✓ OFF ROAD PARKING & GARAGE
- ✓ GOOD SIZED REAR GARDEN
- ✓ CLOSE TO LOCAL SCHOOL
- ✓ GAS CENTRAL HEATING



# Rooms

## Porch

3' 7" x 7' 9" (1.08m x 2.37m)

## Entrance Hall

7' 11" x 4' 11" (2.41m x 1.51m)

## Kitchen/ Breakfast Room

17' 12" x 7' 10" (5.48m x 2.4m)

## Lounge/ Diner

19' 11" x 10' 10" (6.08m x 3.3m)

## First Floor

8' 0" x 3' 1" (2.44m x 0.95m)

## Bedroom One

10' 5" x 10' 10" (3.18m x 3.31m)

## Bedroom Two

9' 8" x 10' 10" (2.95m x 3.3m)

## Bedroom Three

5' 10" x 8' 1" (1.79m x 2.46m)

## Shower Room

6' 0" x 7' 10" (1.83m x 2.4m)

# External Areas

## Garden

East Facing

## Garage

Single Garage

## Off Road

2 Parking Spaces

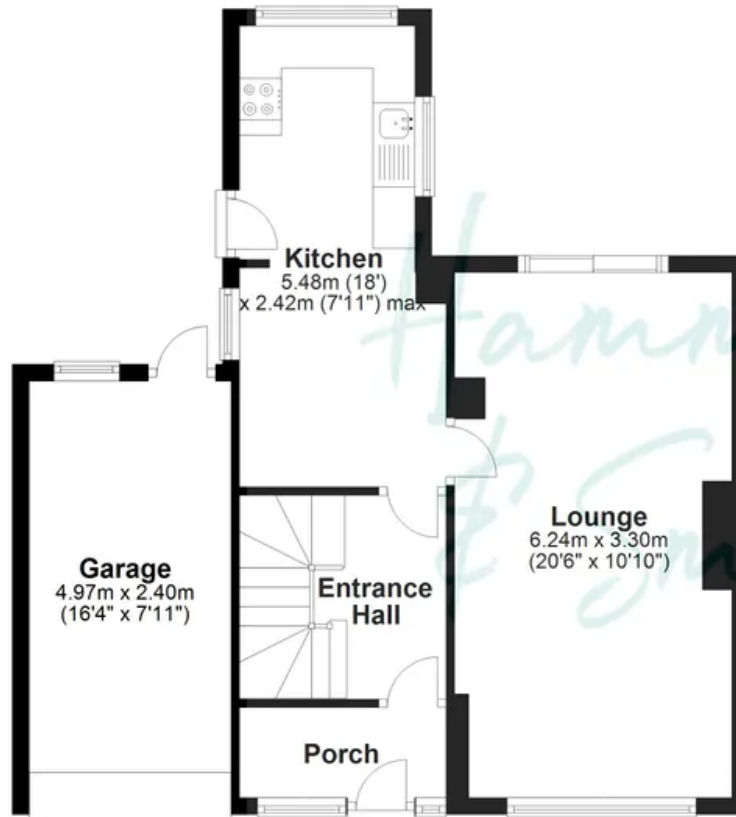




AI

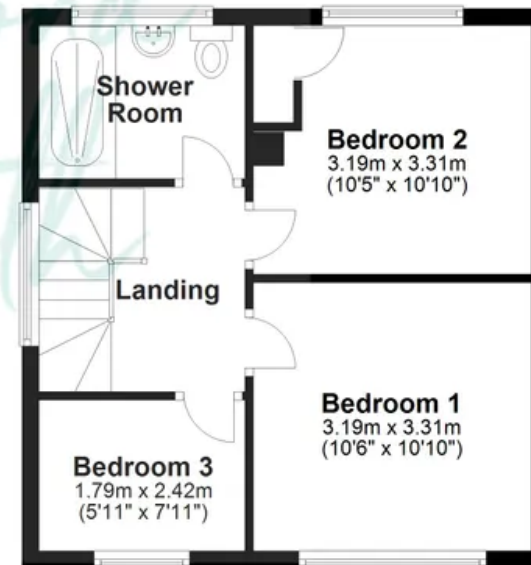
### Ground Floor

Approx. 42.7 sq. metres (459.3 sq. feet)



### First Floor

Approx. 36.6 sq. metres (393.8 sq. feet)



Total area: approx. 79.3 sq. metres (853.1 sq. feet)

Floorplans are provided for guidance only. They are not to scale & must not form any part of a legal contract or be reproduced  
Plan produced using PlanUp.

**Hammond & Smith**

01992 919 007

[hello@hammondandsmith.co.uk](mailto:hello@hammondandsmith.co.uk)

