



# 31 Bridge Hill, Epping

Guide Price £675,000



nd



## 31 Bridge Hill

Epping, Epping

A delightful three bedroom semi-detached home sitting in Bridge Hill, Epping. Walking distance to the local station and with all the buzz of the high street close by, this is a popular spot to be.

Council Tax band: E

Tenure: Freehold

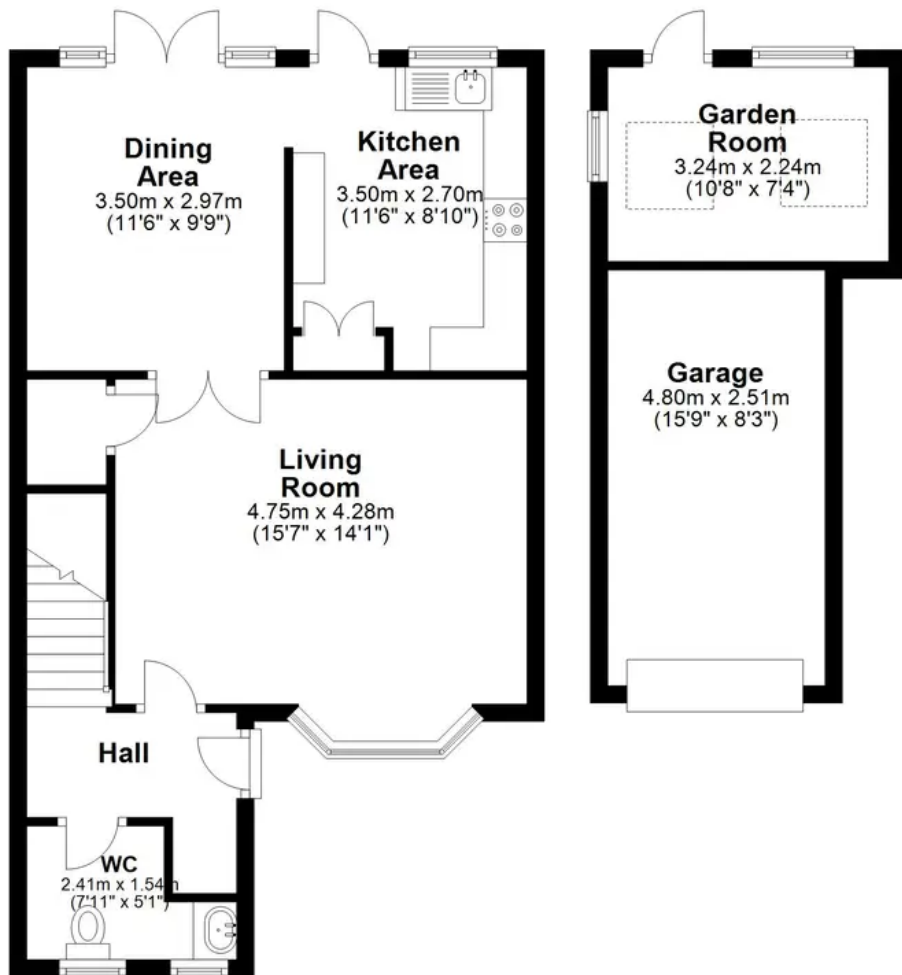
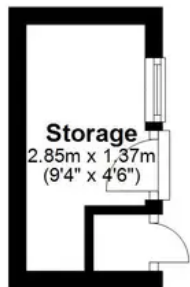
- GARAGE
- PARKING FOR MULTIPLE CARS
- OUTDOOR OFFICE ROOM
- SHORT WALK TO EPPING CENTRAL LINE STATION
- CLOSE TO IVY CHIMNEYS PRIMARY SCHOOL
- DOWNSTAIRS WC





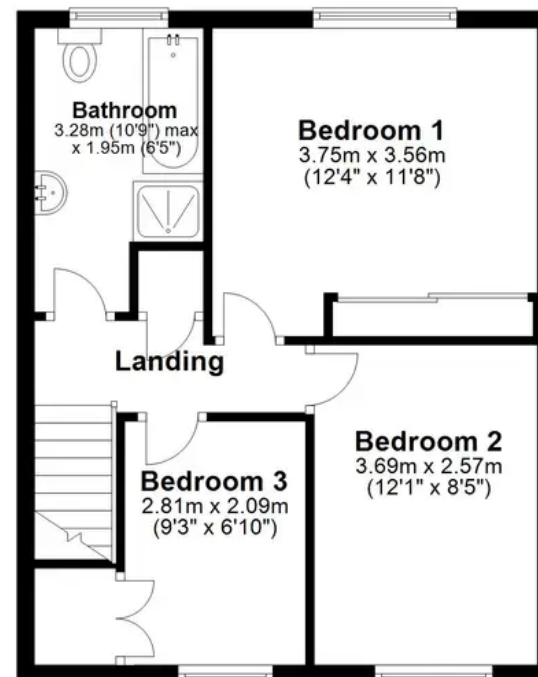
## Ground Floor

Main area: approx. 50.1 sq. metres (539.4 sq. feet)  
Plus outbuildings, approx. 23.5 sq. metres (252.5 sq. feet)



## First Floor

Approx. 42.7 sq. metres (459.2 sq. feet)



Main area: Approx. 92.8 sq. metres (998.6 sq. feet)

Plus outbuildings, approx. 23.5 sq. metres (252.5 sq. feet)