

16 James Street

Epping, Epping

Council Tax band: D

Tenure: Freehold

- CHAIN FREE
- TWO BATHROOMS
- GOOD SIZE GARDEN
- SIDE ACCESS
- EXTENDED TO THE REAR
- CLOSE TO OPEN FIELDS
- OFF ROAD PARKING



Entrance

Lounge

13' 1" x 9' 10" (4.00m x 3.00m)

Study

7' 10" x 12' 2" (2.40m x 3.70m)

Shower Room

5' 7" x 5' 11" (1.70m x 1.80m)

Dining Room

10' 10" x 8' 10" (3.30m x 2.70m)

Kitchen

16' 5" x 8' 10" (5.00m x 2.70m)

Landing

Bedroom One

16' 9" x 9' 2" (5.10m x 2.80m)

Bedroom Two

10' 6" x 9' 2" (3.20m x 2.80m)

Bedroom Three

12' 6" x 9' 2" (3.80m x 2.80m)

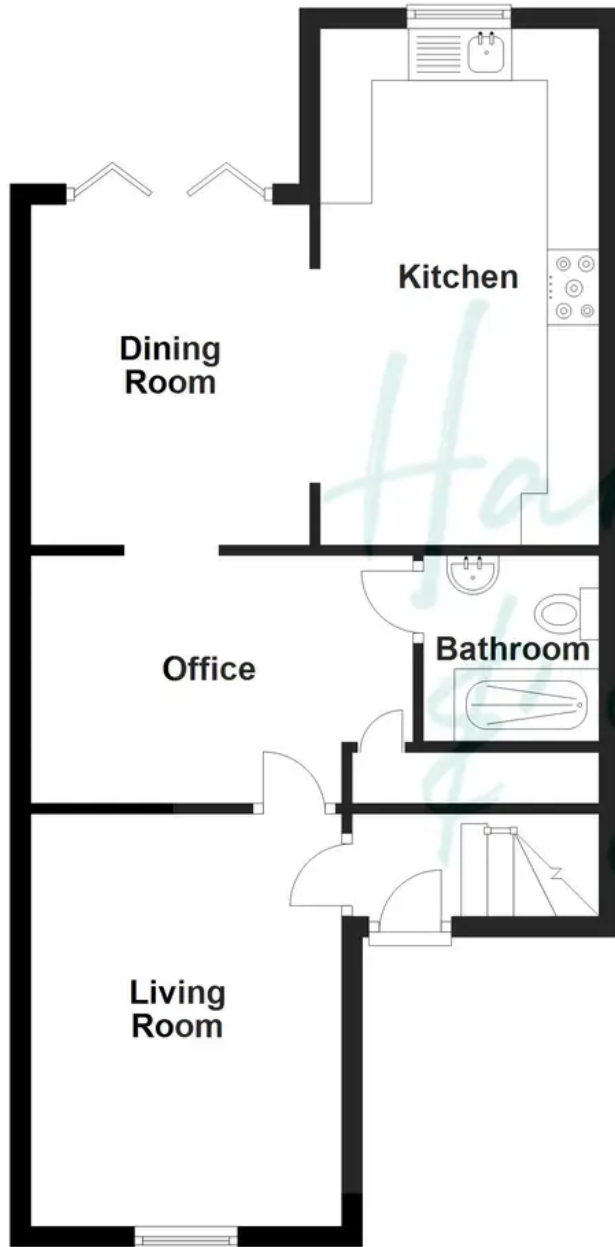
Bathroom

5' 7" x 6' 7" (1.70m x 2.00m)





Ground Floor



First Floor



Floorplans are provided for guidance only. They are not to scale & must not form any part of a legal contract or be reproduced
Plan produced using PlanUp.