

27 Hemnall Street

Epping, Epping

- OFF ROAD PARKING
- PRIME TOWN CENTRE LOCATION
- POTENTIAL TO EXTEND
- DOWNSTAIRS WC
- MODERN DECOR THROUGHOUT
- OUTDOOR UTILITY ROOM
- SIDE ACCESS



Bursting with style, colour and happiness, this is a wonderful three bedroom home. Beautifully renovated throughout, we absolutely love this one!

Some homes have the it-factor - that unique, noteworthy quality that makes it extra special. This home is definitely one of them. The current owners have done a fabulous job in creating a slick modern home with an interior design that's quite simply seamless. Like a kid in a sweet shop, you want to explore this beauty.

Welcomed by a white washed exterior and superbly curated front planting, there's a gravelled driveway and handy side access. Once inside, a sense of light and space floods the home with pops of colour that both excite and intrigue. If Andy Warhol did interiors this would be it. Spanning the length of the home, the open plan living space provides room to lounge, entertain and dine. An art-lovers home, it's full of joy and impeccable finishing, like something you'd see across the pages of Livingetc. The galley-style kitchen is bathed in sunlight from the skylight and bi-folds onto the rear garden. White gloss units provide plenty of storage, and integrated appliances are there to help cook your first meal in your new home. Completing the ground floor is a handy WC. Upstairs, there's two double bedrooms, a good sized single along with a light-filled family bathroom.

Outside, the rear garden is beautifully landscaped with tropical planting, patio and lawn, plus includes plenty of handy storage. Whether it's summer cocktails with friends or an evening lounging with a good book in hand, this is the spot to be.

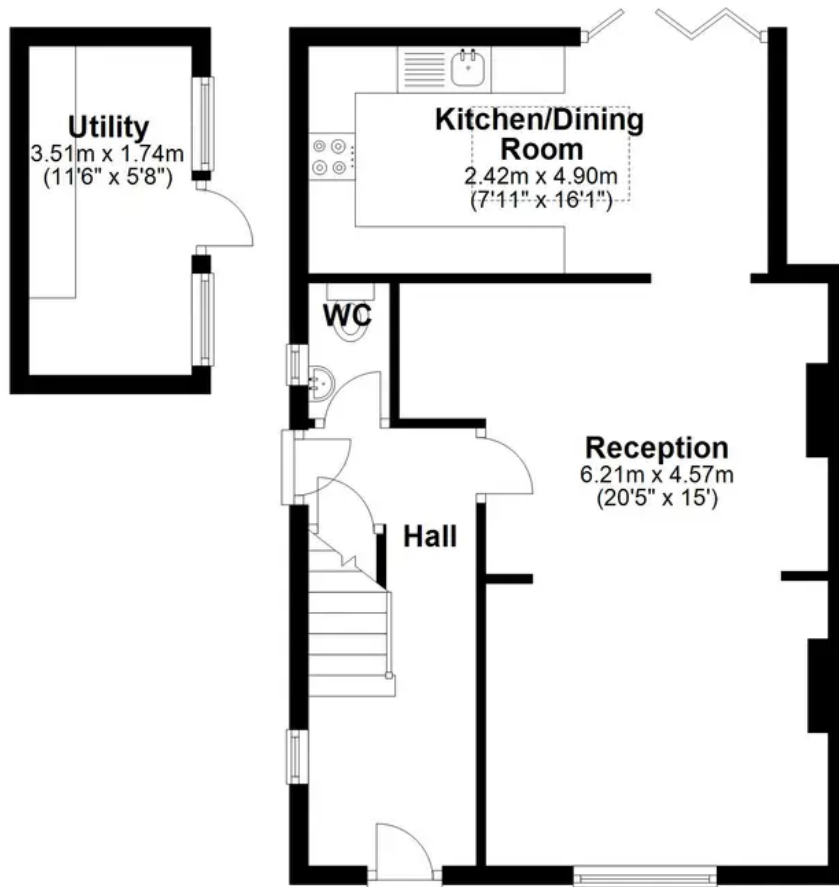
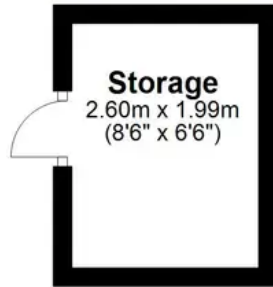
CM16s charms need little introduction but if you're new to the area, Hemnall Street is perfectly placed in Epping, mere moments from the fabulous High Street. With plenty of restaurants, cafes, shops and food halls, along with beautiful forest walks nearby - there is so much to see, do and enjoy here. Not forgetting the Central Line in location, if you're looking for a great place to love, live and call home, then look no further.





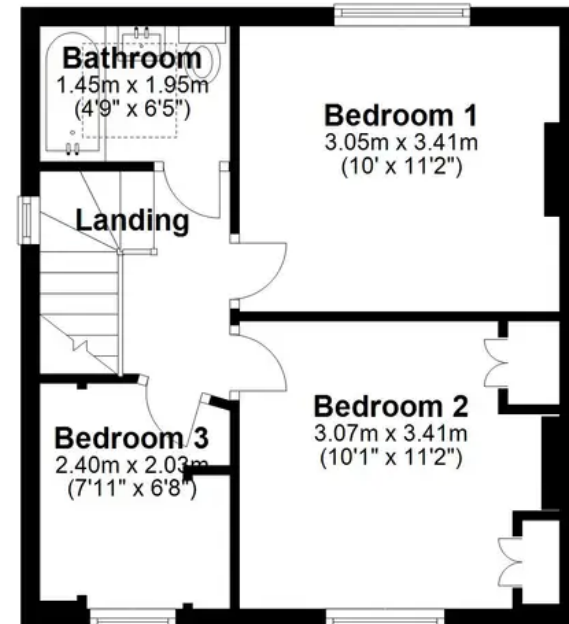
Ground Floor

Main area: approx. 47.9 sq. metres (515.8 sq. feet)
Plus outbuildings, approx. 11.3 sq. metres (121.3 sq. feet)



First Floor

Approx. 34.3 sq. metres (369.3 sq. feet)



Main area: Approx. 82.2 sq. metres (885.1 sq. feet)

Plus outbuildings, approx. 11.3 sq. metres (121.3 sq. feet)