



Garnon Mead, Coopersale, CM16

£270,000 Guide Price

Hammond
& Smith

Property Description

A spacious one bedroom maisonette with its own front garden, located in the leafy spot of Garnon Mead, Coopersale.

Looking for your very first home, ground floor living or perhaps an investment purchase? Then stop and look here. This property offers plenty of potential for you to add your own style and finesse and it's a great place to call home.

Stepping inside you'll find a sunny conservatory - a super spot to sit, read a book and watch the world go by. From here, enter you're spacious open-plan lounge, kitchen /diner. Equipped with fitted kitchen and integrated oven and hob you're all set here to unpack your pots and pans. The good sized double bedroom provides neutral décor and completing this home you'll find the shower room.

What's more, if gardening is your cup of tea the front garden is a real gem for you to create your own little oasis.

Garnon Mead is quite simply a perfect location. Sitting in the village of Coopersale, from here you are moments from fantastic forest walks or maybe a quick glass of your favourite tippie at the delightful Garnon Bushes. With a very special community feel, a parade of convenience shops and a short drive or walk into Epping, Coopersale is a wonderful spot to call home.

EPC Rating: C



Key Features

- ✓ GROUND FLOOR
- ✓ OPEN PLAN KITCHEN/LIVING AREA
- ✓ PRIVATE GARDEN
- ✓ DOUBLE BEDROOM
- ✓ CLOSE TO FOREST
- ✓ CONSERVATORY
- ✓ DOUBLE GLAZING & GAS CENTRAL HEATING



Rooms

Front Garden

Front Door

Conservatory

9' 7" x 11' 4" (2.92m x 3.46m)

Kitchen/Living Area

24' 10" x 14' 10" (7.58m x 4.53m)

Bedroom One

11' 4" x 9' 12" (3.46m x 3.04m)

Shower Room

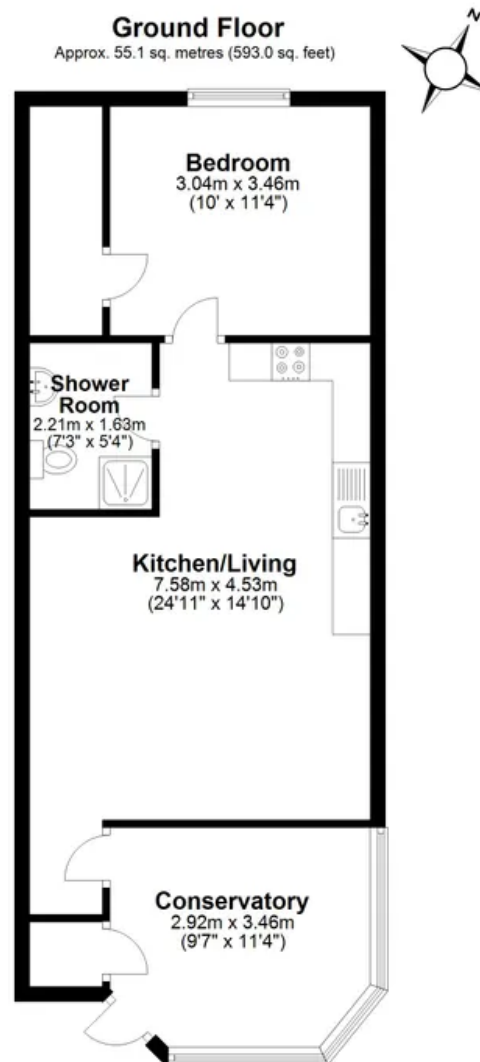
7' 3" x 5' 4" (2.21m x 1.63m)





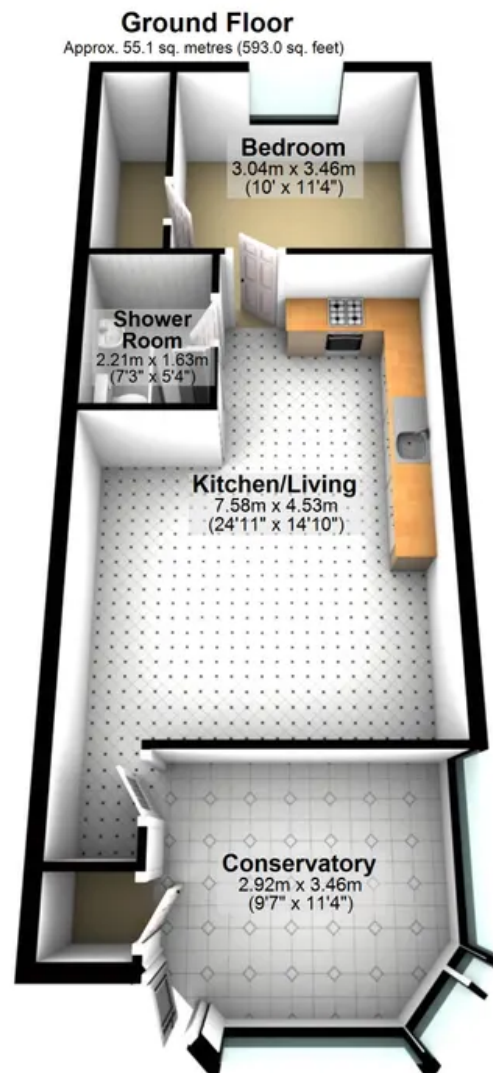


All



Total area: approx. 55.1 sq. metres (593.0 sq. feet)

All



Total area: approx. 55.1 sq. metres (593.0 sq. feet)

Hammond & Smith

01992 919 007

hello@hammondandsmith.co.uk

