

# 30 Bury Road

Epping, Epping

Council Tax band: E

Tenure: Freehold

- POTENTIAL TO EXTEND
- HIGHLY DESIRABLE LOCATION
- OFF ROAD PARKING
- MODERN INTEGRATED KITCHEN
- SHORT WALK TO EPPING FOREST
- TWO MODERN BATHROOMS
- GOOD SIZE REAR GARDEN
- GAS CENTRAL HEATING



## Entrance Hall

## Lounge

13' 4" x 11' 2" (4.06m x 3.40m)

## Dining Room

13' 5" x 11' 2" (4.09m x 3.40m)

## Kitchen

13' 7" x 11' 2" (4.14m x 3.40m)

## Tv Room/ Bedroom 4

13' 2" x 11' 2" (4.01m x 3.40m)

## Cloakroom/ Utility

6' 5" x 5' 6" (1.96m x 1.68m)

## First Floor

## Bedroom One

14' 9" x 9' 7" (4.50m x 2.92m)

## En-suite Shower Room

## Bedroom Two

14' 9" x 7' 9" (4.50m x 2.36m)

## Bedroom Three

12' 2" x 7' 2" (3.71m x 2.18m)

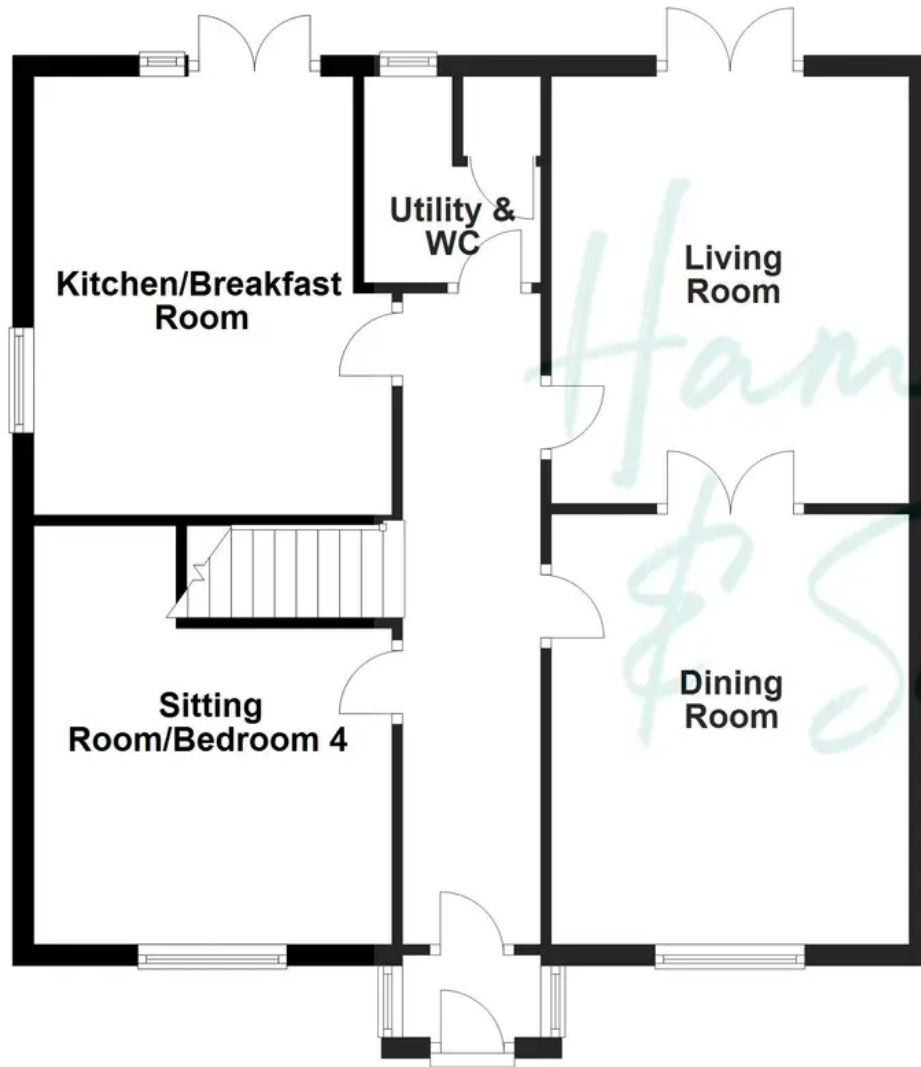
## Bathroom

7' 10" x 5' 8" (2.39m x 1.73m)





### Ground Floor



### First Floor

