

15 Rayfield

Epping, Epping

A lovingly developed, fully refurbished and extended mid terrace four bedroom family home. Located in the heart of Epping and available winter 2022, this property sits in a great spot!

Tenure: Freehold

- FULLY REFURBISHED FAMILY HOME
- OFF ROAD PARKING
- INTERGRATED KITCHEN
- MASTER BEDROOM WITH EN-SUITE
- DOUBLE GLAZED THROUGHOUT
- MODERN BATHROOM
- CLOSE TO SCHOOLS
- SHORT WALK TO SHOPS



Entrance Hall

.

Wc

.

Lounge/ Diner

.

Kitchen Area

.

First Floor

.

Bedroom Two

.

Bedroom Three

.

Bedroom Four

.

Family Bathroom

.

Second Floor

.

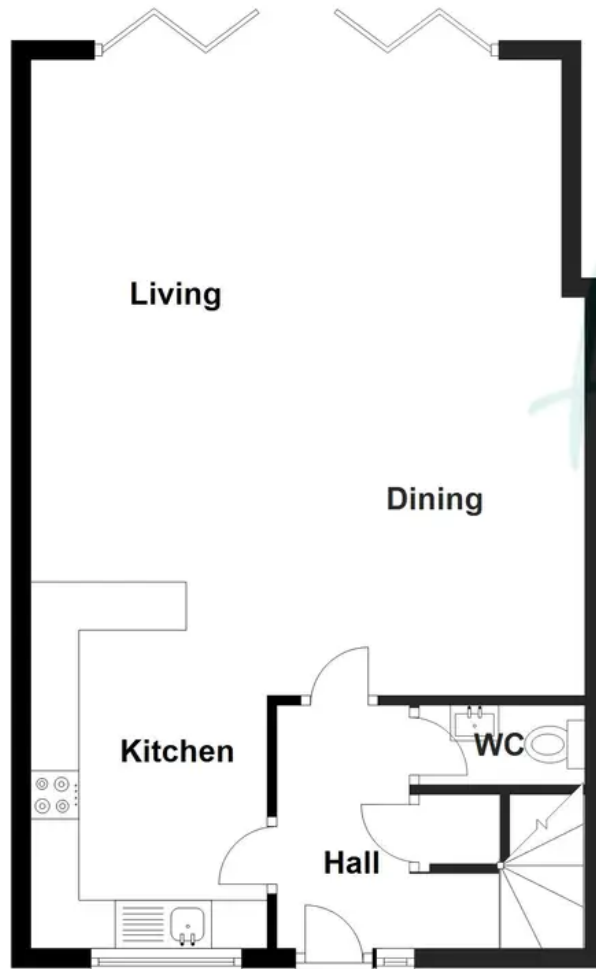
Master Bedroom

En-suite

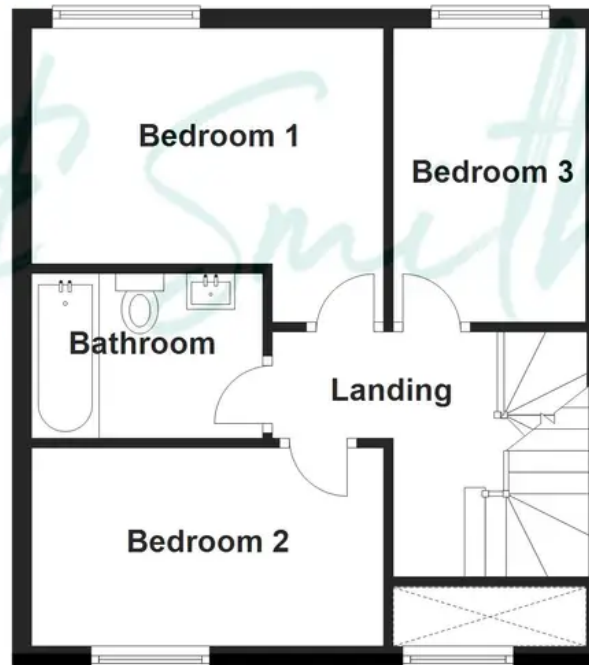




Ground Floor



First Floor



Second Floor

