

# 29 Buckingham Road

Epping, Epping

An exquisite 6 bed detached family home, complimented with the addition of a separate home gym and office space based just a stones throw from Epping High Street.

Tenure: Freehold

- DETACHED GYM AND OFFICE SPACE
- WALKING DISTANCE TO STATION/HIGH STREET
- BI-FOLDING DOORS
- LANDSCAPED REAR GARDEN
- THREE EN-SUITES AND A FAMILY BATHROOM
- DRIVEWAY PARKING



**Entrance Hall**

**Living Room**

32' 1" x 12' 7" (9.79m x 3.83m)

**Wc**

**Kitchen/ Dining Room**

32' 1" x 11' 12" (9.79m x 3.65m)

**Utility Room**

7' 3" x 5' 9" (2.21m x 1.75m)

**First Floor**

**Bedroom One**

13' 3" x 10' 6" (4.04m x 3.21m)

**Dressing Room**

7' 10" x 9' 4" (2.38m x 2.84m)

**En-suite Bathroom**

5' 7" x 12' 2" (1.69m x 3.72m)

**Bedroom Two**

14' 10" x 9' 11" (4.52m x 3.01m)

**En-suite Shower Room**

3' 12" x 9' 11" (1.21m x 3.01m)

**Top Floor**

**Bedroom Three**

13' 3" x 10' 6" (4.04m x 3.21m)

**Shower Room**

5' 6" x 5' 9" (1.68m x 1.74m)

**Bedroom Four**

12' 7" x 10' 3" (3.84m x 3.13m)

**Bedroom Five**

9' 6" x 10' 11" (2.89m x 3.32m)

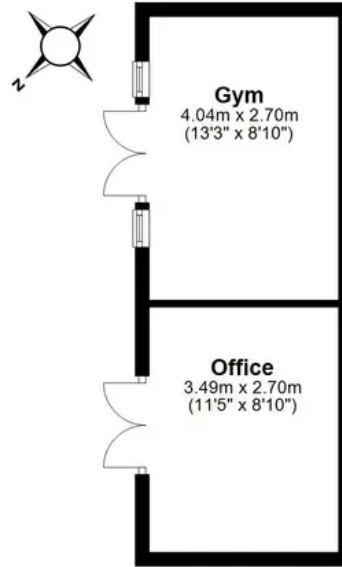
**Bedroom Six**

6' 5" x 10' 2" (1.95m x 3.12m)

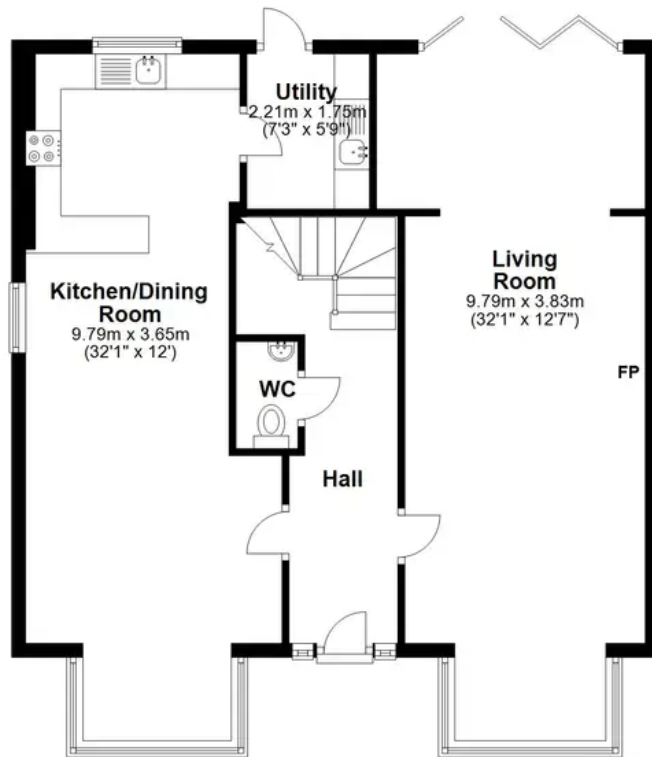
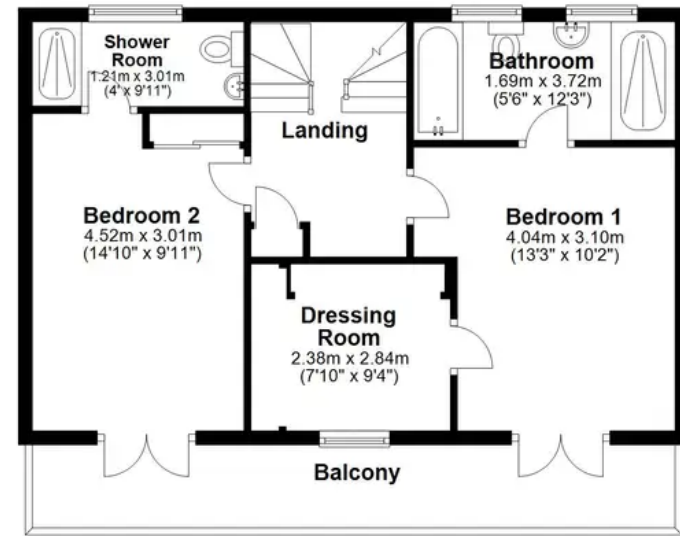




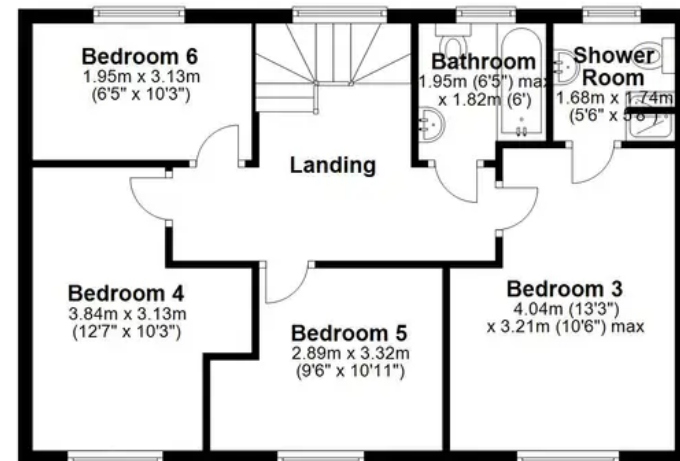
**Ground Floor**  
 Approx. 97.6 sq. metres (1050.7 sq. feet)



**First Floor**  
 Approx. 50.8 sq. metres (546.9 sq. feet)



**Second Floor**  
 Approx. 55.2 sq. metres (594.4 sq. feet)



Total area: approx. 203.7 sq. metres (2192.1 sq. feet)