



Woodside, Thornwood, CM16

£850,000 In Excess of

*Hammond
& Smith*

Property Description

A breathtakingly beautiful four bedroom family home located in the hamlet of Thornwood. This historic home with a modern twist is one you will not want to miss.

" We love living here, your right by the forest and get the feeling of rural living but you have the convenience of the shops and Epping station just up the road."

Arriving at this period home the large gated driveway sets the scene, a property of exquisite elegance and charm. With its red brick and sash windows it is picture postcard perfection! Heading inside past meets present with seamless white walls and a fresh modern decor. To your right sits the living room, a quietly stunning space where you can relax in comfort with a book or cosy up in front of the TV to watch your favourite box set. The stylishly sleek interior continues into the kitchen/diner, which is simply exquisite. With large bifold doors and picture windows, under floor heating, air conditioning and access to the utility room / WC this room is a real showstopper. The kitchen itself provides a fabulous island unit with sink and breakfast bar, a large pantry, along with a double oven and gas hob. Completing the ground floor you will also find an office - the perfect addition for those working from home.

Upstairs you will find four double bedrooms with the beautiful master providing an en-suite with walk in shower, vaulted ceiling, air conditioning and walk-in wardrobe. The design and decor of the family bathroom pairs beautifully with the rest of the home; its chic, sleek and sophisticated with plenty of contemporary design touches.

Outside the rear garden provides a blank canvas for you to add your own



mark. If you enjoy entertaining, this garden provides the perfect base for you to get you started.

Thornwood is positioned in a great spot just outside Epping, with easy access to the M11/M25 and just a 6-minute drive to the London Underground Central Line. This spectacular property truly is a place of wonder and delight offering all the ingredients for a terrific family home.

Key Features

- ✓ LARGE GARDEN
- ✓ GATED DRIVEWAY
- ✓ OPEN PLAN LIVING AREA
- ✓ STYLISH FITTED KITCHEN
- ✓ DETACHED PERIOD HOME
- ✓ FOUR DOUBLE BEDROOMS
- ✓ IMPRESSIVE LARGE MASTER SUITE
- ✓ OUTBUILDING TO REAR



Rooms

Entrance Hall

Lounge

Study

Kitchen/Diner/Family Room

WC/UTILITY

First Floor

Master Bedroom

Walk in Wardrobe

EN-SUITE TO MASTER BEDROOM

Bedroom Two

BEDROOM THREE

BEDROOM FOUR

FAMILY BATHROOM

External Areas

Garden

Secure Gated

4 Parking Spaces









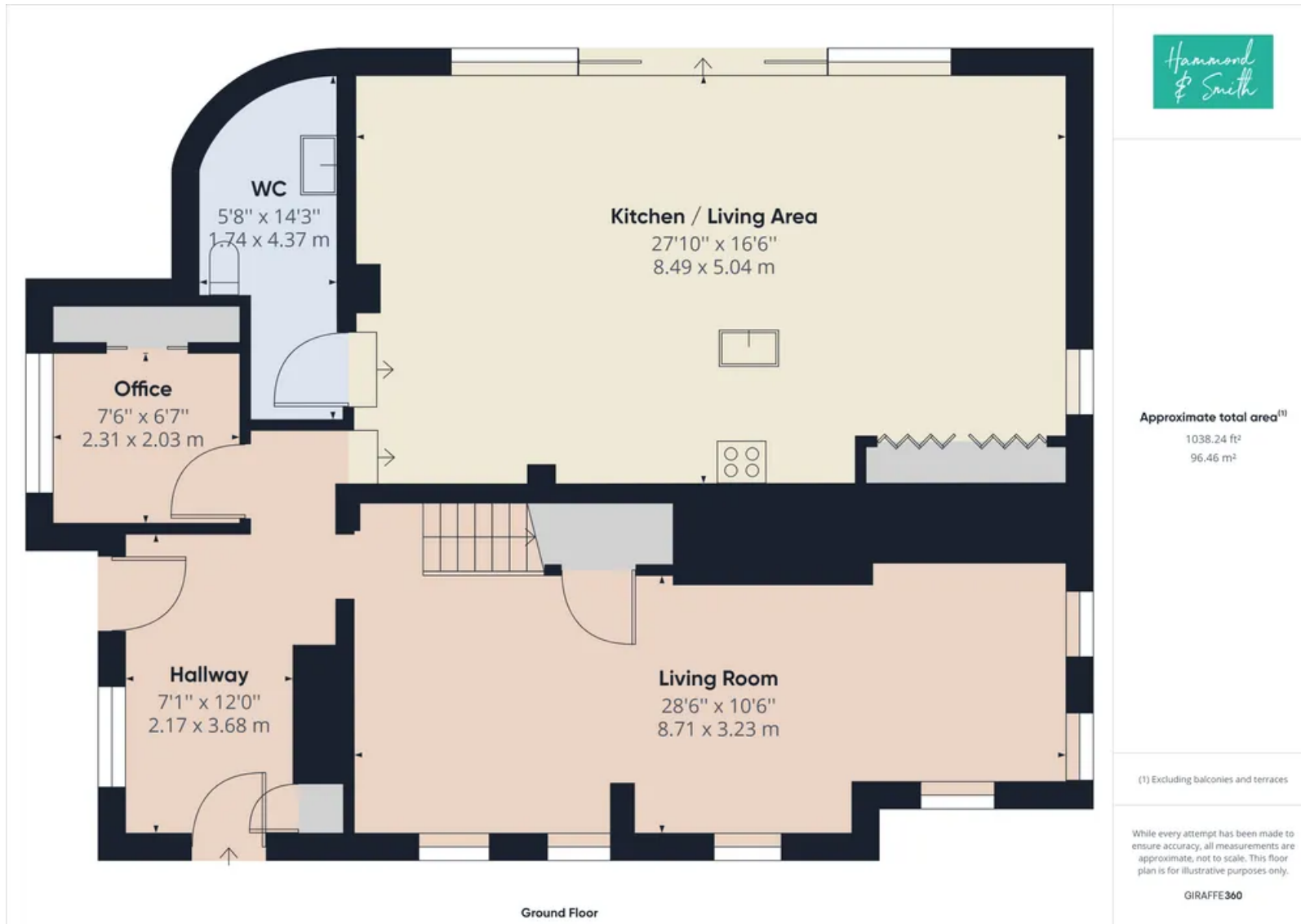
NO ONE
IS YOU
AND THAT
IS YOUR
POWER

Hammond
to all

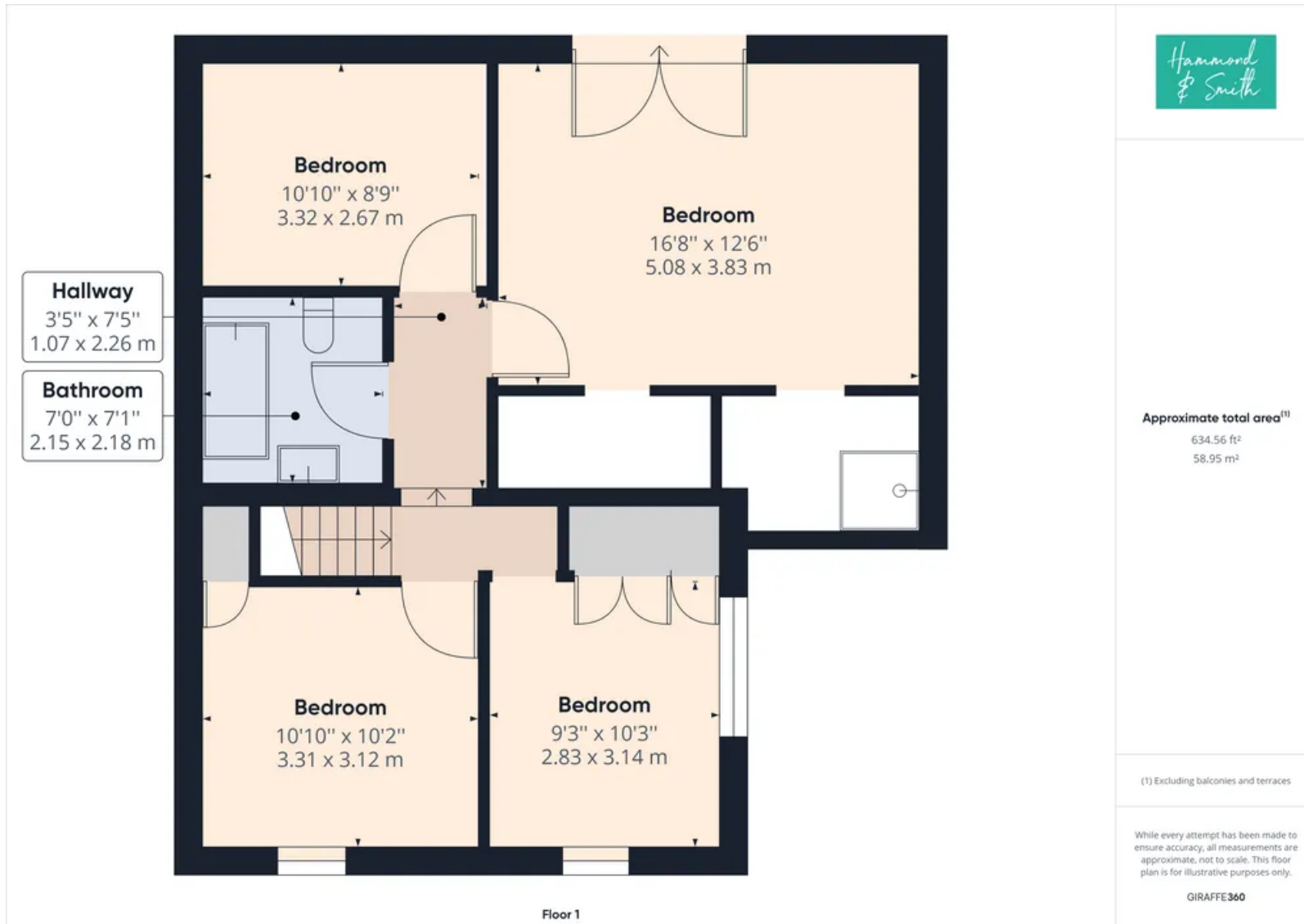


Hammond
& Smith

Ground Floor

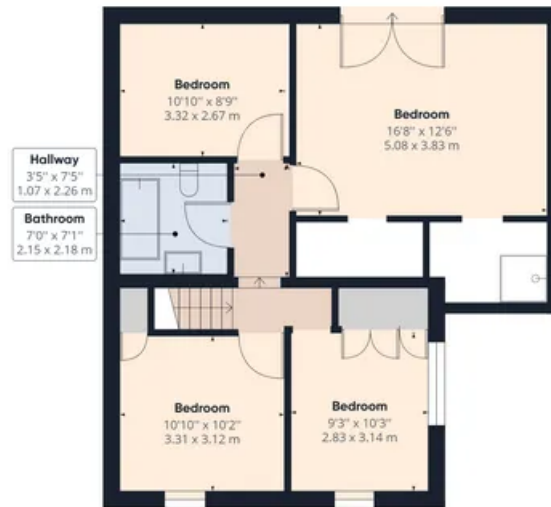


First Floor





Ground Floor Building 1



Floor 1 Building 1



Approximate total area⁽¹⁾

1672.79 ft²

155.41 m²

(1) Excluding balconies and terraces

While every attempt has been made to ensure accuracy, all measurements are approximate, not to scale. This floor plan is for illustrative purposes only.

GIRAFFE360

Hammond & Smith

01992 919 007

hello@hammondandsmith.co.uk

