

LG NeON[®]H

The LG NeON[®]H is one of the most powerful and versatile modules on the market today. The LG NeON[®]H is equipped with N-type cells and half-cut technology to increase power and efficiency. The LG NeON[®]H includes a 25-year product and 90.6% performance warranty for higher performance and reliability.

390W | 385W
380W | 375W | 370W

FEATURES

90.6%
in year 25

Enhanced Performance Warranty

LG NeON[®]H comes with an enhanced performance warranty. After 25 years of use, the LG NeON[®]H is guaranteed to provide at least 90.6% of initial performance.

25
YEARS
WARRANTY

Industry-Leading Product Warranty

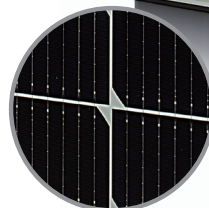
LG offers an industry-leading 25 year product warranty on the NeON[®]H.



Reliable Quality

LG NeON[®]H offers reliable and proven quality through rigorous testing*.

* LG is subject to rigorous quality verification through PVEL PQP test. The PVEL PQP includes test sequences examining both the reliability and performance characteristics of PV modules.



120_{cell}

About LG Electronics

LG is transforming today's solar landscape, offering high-efficiency solar panels for customers who demand high performance, reliability and consistently strong energy yield from a brand they can trust. LG's modules feature high power outputs, outstanding durability, appealing aesthetics and high-efficiency technology.



Electrical Properties (STC*)

| Model | | LG390N1C-E6 | LG385N1C-E6 | LG380N1C-E6 | LG375N1C-E6 | LG370N1C-E6 |
|-----------------------------------|-----|-------------|-------------|-------------|-------------|-------------|
| Maximum Power (Pmax) | [W] | 390 | 385 | 380 | 375 | 370 |
| MPP Voltage (Vmpp) | [V] | 35.8 | 35.5 | 35.1 | 34.8 | 34.4 |
| MPP Current (Impp) | [A] | 10.92 | 10.88 | 10.85 | 10.80 | 10.76 |
| Open Circuit Voltage (Voc, ± 5%) | [V] | 42.4 | 42.0 | 41.7 | 41.3 | 40.9 |
| Short Circuit Current (Isc, ± 5%) | [A] | 11.49 | 11.44 | 11.39 | 11.35 | 11.30 |
| Module Efficiency | [%] | 21.2 | 20.9 | 20.6 | 20.4 | 20.1 |
| Power Tolerance | | | | 0 ~ +3 | | |

* STC (Standard Test Condition) : Irradiance 1,000W/m², Cell temperature 25°C, AM 1.5, Measure tolerance of Pmax : ±3%

Electrical Properties (NMOT)

| Model | | LG390N1C-E6 | LG385N1C-E6 | LG380N1C-E6 | LG375N1C-E6 | LG370N1C-E6 |
|-----------------------------|-----|-------------|-------------|-------------|-------------|-------------|
| Maximum Power (Pmax) | [W] | 294 | 291 | 287 | 283 | 279 |
| MPP Voltage (Vmpp) | [V] | 33.6 | 33.4 | 33.0 | 32.7 | 32.4 |
| MPP Current (Impp) | [A] | 8.75 | 8.72 | 8.69 | 8.65 | 8.62 |
| Open Circuit Voltage (Voc) | [V] | 39.9 | 39.5 | 39.2 | 38.8 | 38.5 |
| Short Circuit Current (Isc) | [A] | 9.25 | 9.21 | 9.17 | 9.14 | 9.10 |

General Data

| | |
|-------------------------------------|--------------------------------|
| Cell Properties (Material / Type) | Monocrystalline / N-type |
| Cell Maker | LG |
| Cell Configuration | 120 Cells (6 x 20) |
| Number of Busbars | 9 EA |
| Module Dimensions (L x W x H) | 1,768 x 1,042 x 40 mm |
| Weight | 18.5 kg |
| Glass (Material) | Tempered Glass with AR coating |
| Backsheet (Color) | White |
| Frame (Material) | Anodized Aluminium |
| Junction Box (Protection Degree) | IP 68 with 3 Bypass Diodes |
| Cables (Length)(Included Connector) | 1,200 mm x 2 EA |
| Connector (Type / Maker) | MC4 / Stäubli |

Certifications and Warranty

| | |
|-------------------------------|---|
| Certifications | IEC 61215-1/-1-1 / 2 : 2016, IEC 61730-1/2 : 2016, UL 61730-1 : 2017, UL 61730-2 : 2017 |
| | ISO 9001, ISO 14001 |
| | OHSAS 18001 |
| Salt Mist Corrosion Test | IEC 61701 : 2011 Severity 6 |
| Ammonia Corrosion Test | IEC 62716 : 2013 |
| Module Fire Performance | Type 1 (UL 61730) |
| Fire Rating | Class C (UL 790) |
| Solar Module Product Warranty | 25 Years |
| Solar Module Output Warranty | Linear Warranty* |

* 1) First years : 98.5%, 2) After 1st year : -0.33%/year, 3) 90.6% for 25 years

Operating Conditions

| | | |
|-------------------------------|------|--------------------------|
| Operating Temperature | [°C] | -40 ~ +85 |
| Maximum System Voltage | [V] | 1,000 (IEC) / 1,000 (UL) |
| Maximum Series Fuse Rating | [A] | 20 |
| Mechanical Test Load* (Front) | [Pa] | 5,400 |
| Mechanical Test Load* (Rear) | [Pa] | 4,000 |

* Based on IEC 61215-2 : 2016 (Test Load = Design Load x Safety Factor(1.5))

※ Mechanical Test Loads 6,000 Pa / 5,400 Pa based on IEC 61215 : 2005

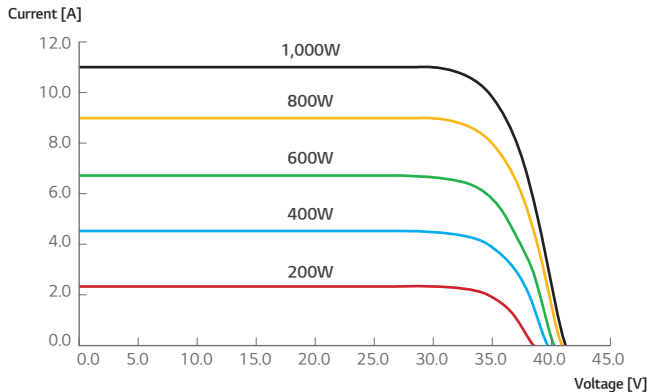
Temperature Characteristics

| | | |
|-------|--------|--------|
| NMOT* | [°C] | 42 ± 3 |
| Pmax | [%/°C] | -0.33 |
| Voc | [%/°C] | -0.26 |
| Isc | [%/°C] | 0.04 |

* NMOT (Nominal Module Operating Temperature)

: Irradiance 800W/m², Ambient temperature 20°C, Wind speed 1m/s, Spectrum AM 1.5

I-V Curves



Dimensions (mm/inch)

