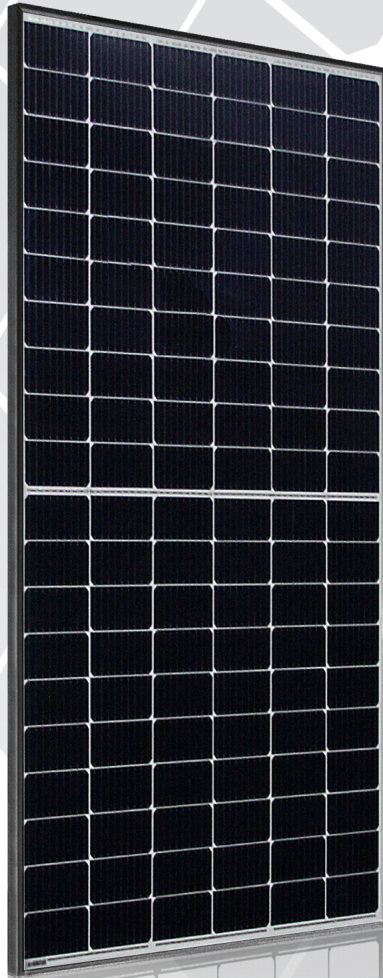




X-HALF CUT Monocrystalline

360 - 365 - 370 - 375 - 380 Wp



Efficiency up to 20.54%



120 Half-cut cells 9 Busbar



High Voltage 1500 Vdc



High resistance to snow/wind loads



Only positive tolerance



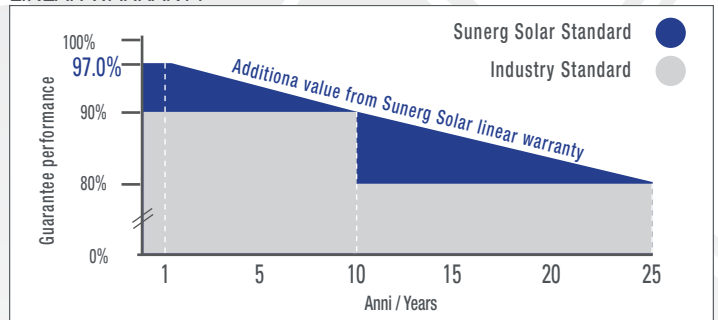
Product Warranty



Linear Warranty

X-HALF CUT is one of a wide range of SUNERG's product. It is manufactured according to IEC 61215, IEC 61730 and CE standards. The innovative 9 busbar half-cells guarantee high power per unit, reduce the risk of micro-crack, mismatch and shadow loss, so increasing the reliability of the module.

LINEAR WARRANTY



Look Warranty terms

CORRESPOND TO

IEC 61215 | IEC 61730 | PV CYCLE | CE |

UNI EN ISO 9001:2008

UNI EN ISO 14001:2004

UNI EN BS OHSAS 18001:2007

| Quality management system

| Standards for environmental management system

| International standards for occupational health and safety

ELECTRICAL DATA (STC)

		XMHC120360BW+H	XMHC120365BW+H	XMHC120370BW+H	XMHC120375BW+H	XMHC120380BW+H
Open circuit Voltage	(Voc)	40.90 V	41.10 V	41.30 V	41.50 V	41.70 V
Voltage a Pmax.	(Vmp)	33.70 V	33.90 V	34.10 V	34.30 V	34.50 V
Short-circuit current	(Isc)	11.20 A	11.28 A	11.37 A	11.46 A	11.55 A
Current at Pmax.	(Imp)	10.69 A	10.77 A	10.86 A	10.95 A	11.04 A
Peak Power (Pmax) Tolerance 0/+5Wp		360 Wp	365 Wp	370 Wp	375 Wp	380 Wp
Module Efficiency		19.46%	19.73%	20.00%	20.27%	20.54%
Maximum voltage		1500 V DC	1500 V DC	1500 V DC	1500 V DC	1500 V DC
Maximum series fuse rating		20A	20A	20A	20A	20A
Operating Temperature		-40°C - +85°C	-40°C - +85°C	-40°C - +85°C	-40°C - +85°C	-40°C - +85°C

Tolerance electric measurement ±3%

*** STC (Standard test conditions)**

 Irradiance 1000 w/m², temperature 25°C, AM= 1.5

TEMPERATURE COEFFICIENT

NMOT	41°C±3°C
Pmax Temperature Coefficient	-0.36%/ °C
Voc Temperature Coefficient	-0.28%/ °C
Isc Temperature Coefficient	0.05% / °C

MECHANICAL CHARACTERISTIC

Maximum Load (front/back)	5400 Pa / 2400 Pa
Dimensions (mm)	1765 x 1048 x 35
Weight (Kg)	20
Solar cells type	Mono 83x166 mm
No. solar cells	120 [2x(10x6)]

PACKING CONFIGURATION

Module per Pallet	31 pcs.
Modules per container 40'	871 pcs.

GENERAL INFORMATION

Frame	Anodized aluminum alloy
Junction Box	IP68
Output Cable	4.0mm ² , Landscape: N 1100mm, P 1100mm / Portrait: N 150mm, P 300mm
Connector	MC4 compatible

