



SERVICES

Powered with **GKOS**

## Real-Time Water Monitoring

### REAL-TIME TESTING

Un-biased Results

1

Solution

8+

Water Parameters

Unbiased full-service remote monitoring of water composition for tank batteries, storage tanks, ponds, and hydraulic fracturing sites.

*ELECTRA* provides real-time analysis of oilfield water composition, resulting in data-driven decisions to optimize fluid designs. Remote monitoring eliminates any delays associated with traditional sample collection schedules and lab testing turn-around times. This reduces chemical expenses, improves water treatment efficiencies, and creates KPI's for water quality.

#### ***GK Remote Monitoring Capabilities include:***

- Total Dissolved Solids (TDS)
- Conductivity
- pH
- ORP
- Chlorides
- Total Suspended Solids (TSS)
- Dissolved Oxygen
- Corrosion Rate

#### **MONITOR**

Measure water composition real-time. Track changes that influence corrosion, scaling, and chemical incompatibility.

#### **MANAGE**

Reduce personnel requirements for sample collection and testing.

#### **VERIFY**

Unbiased data for water KPI's and eliminate potential conflicts of interest related to validations performed by the suppliers or service providers.

# ANALYTICS

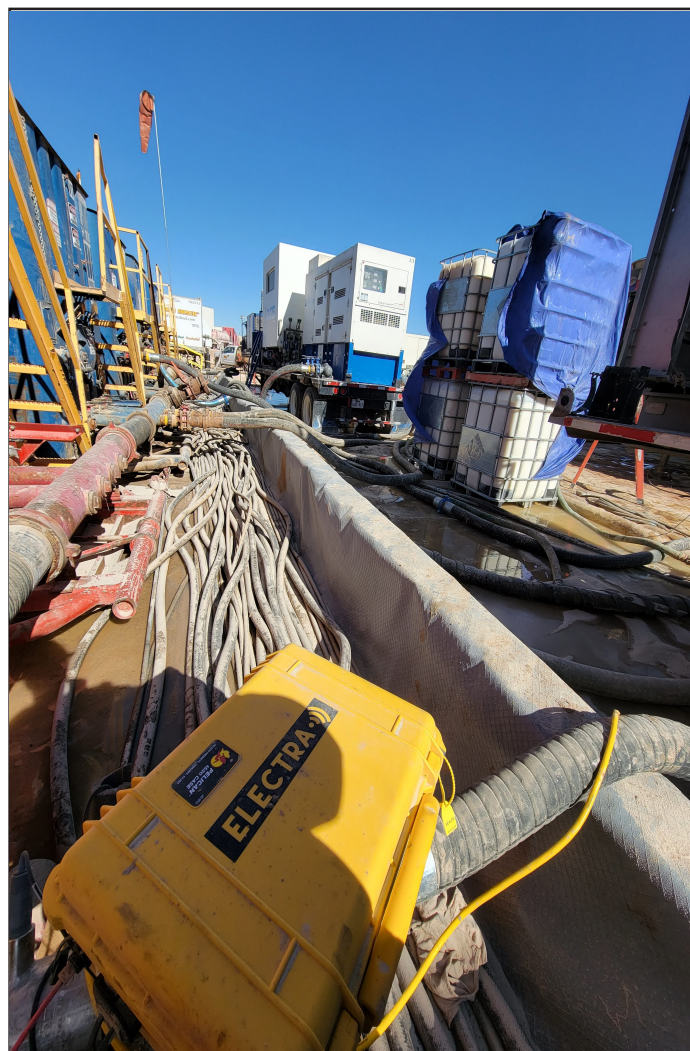
## DATA. ON-DEMAND. 24/7.

Ensure effective frac chemical performance and track changes in fluid parameters.

Make informed decisions with **ELECTRA**.

### **Centralized Data**

- Failure Tracking
- Predictive analysis
- Automated Reporting
- Online Access
- Actionable Data



### **TRACK**

Alarms for out of range parameters keep you up-to-date with process changes. Pro-actively manage water and effectiveness of water treatment programs.

### **OPTIMIZE**

Optimize chemical usage by diagnosing chemical performance issues in real-time. Establish performance criteria and identify trends. Complete chemical testing capabilities and a knowledgeable team support all completion and production chemical needs.

### **ANALYZE**

Access all your water and chemical test data in a searchable database for detailed comparative analysis. Access historical data and evaluate the effects of various water types, chemicals, etc.