

we are

Foundation We Are

/ social design
/ exhibitions
/ makerspace
/ talks
/ shop

Foundation We Are was established in 2018 with the goal to enable and facilitate unexpected collaborations between the creative sector and experts on societal transitions. With the mission to promote and practise interdisciplinary design, the foundation develops cross-practice incubators, exhibitions, events and educational programs.

For this reason, our headquarters have always functioned as an open space, for socially engaged designers and societal experts to meet and collaborate.

In January 2023, Foundation We Are moved to its new 600 m² headquarters in Strijp-S, in what used to be the home of Yksi Expo. A place we are happy to take on as our new home, where we've been eagerly building up and preparing to open our doors once more.

In this new space we created The Village which is a new community space for socially engaged creatives and we are searching for people who would like to join us.

We have different studio spaces available for starting or more experienced social designers, creative professionals who want to work on current challenges or researchers who want to connect with a creative community and collaborate with designers.

So if you are looking for a space in the middle of Strijp-S and want to join a growing community we have the following spaces available.

Located at
Torenallee 22-04
5617 BD
Strijp-S
Eindhoven

To explore the possibilities together, reach out to us at info@foundationweare.org



we are



desk

you can rent an individual working place



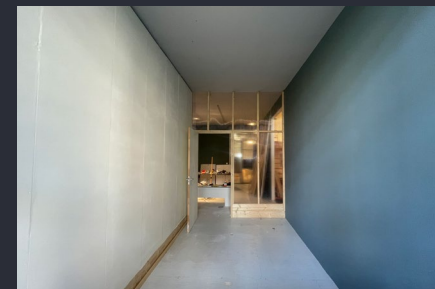
house

Your personal greenhouse where you can grow your ideas ;) It is 2,5x2,5m and is €200,- excl. VAT a month .



cabin

The cabin available is 3x2,5m and is €285,- excl. VAT per month.



space

Your own office space where you can take the next step in your design career. The office spaces are 4,8x2,4m and are €400,- excl. VAT per month.



Besides your individual spaces you can use a lot of common facilities of approximately 300m². We have three meeting areas, a photo studio, an exhibition space, a printing corner including cutting plotter, A0 Plotter and regular printers. We also have a space that can be used for workshops, presentations, catwalks or whatever you can imagine the space to be.

If you are interested send us a message or email us via info@foundationweare.org

we are

event space

Event space for presentations, screenings and workshops, for groups of up to 50 people. Including presentation equipment and technical support. Available per day part of 4 hours in the morning, afternoon and evening.

Costs: €500,- per day part, excl. VAT;

Available on request:

- Coffee / Tea / Snack: €4,50 p.p. excl VAT
- Beer / Wine / Snacks: €4,00 per consumption excl. VAT
- Lunch / Dinner: provided by Stories (ask for the options)

exhibition space rental

Expo space for exhibition, 70 m². Including lighting and presentation furniture. The exhibition would be open during the opening hours of Foundation We Are. Extending those hours is possible on request. Upon request and for an additional charge, the exhibition area can be extended to 120 m².

Available for rent for longer periods, charged per week or per month.

Costs: € 550,- per week, or €1250,- per month excl. VAT;

Available on request, for the opening, closing of the exhibition, screenings or other events:

- Coffee / Tea / Snack: € 4,50 p.p. excl VAT
- Beer / Wine / Snacks: € 4,00 per consumption excl. VAT
- Lunch / Dinner: provided by Stories (ask for the options)

