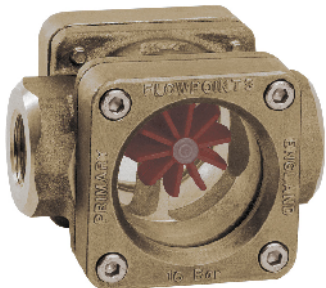


**Product Information**

**FR-015..025GR**

**Flow Indicator**  
**FR-...GR**



- Rotor on both sides directly behind natural glass
- Installation location as desired

**Characteristics**

Mechanical flow indicator, for fluid media, with twin rotor for quantitative flow display. The rotor turns in proportion to the flow. Robust construction in red bronze/brass

**Technical data**

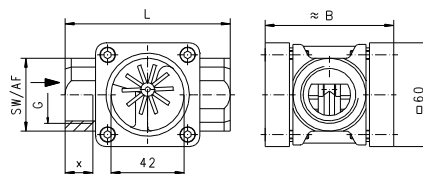
<b>Nominal width</b>	DN 15..25	
<b>Process connection</b>	female thread G 1/2..G 1	
<b>Display range</b>	2.5..65 l/min	for details see table "Ranges"
<b>Q<sub>max.</sub></b>	to 65 l/min	
<b>Pressure resistance</b>	PN 16 bar	
<b>Medium temperature</b>	0..+100 °C	
<b>Ambient temperature</b>	0..+100 °C	
<b>Materials medium-contact</b>	Rg 5, CW614N, soda lime glass, POM Klingersil C4400	
<b>Medium</b>	water (oils have a tendency to a higher running-up value)	
<b>Weight</b>	see table "Dimensions and weights"	
<b>Installation location</b>	as desired, except for inwards flow from above	

**Ranges**

G	Types	Running-up amount for rotor l/min H <sub>2</sub> O	Q <sub>max.</sub> recommended
G 1/2	FR-015GR	2.5	25
G 3/4	FR-020GR	3.0	45
G 1	FR-025GR	5.0	65

**Dimensions and weights**

G	Types	L	B	SW	X	Weight kg
G 1/2	FR-015GR	85	68	38	14	1.20
G 3/4	FR-020GR					1.10
G 1	FR-025GR	95	74	42	16	1.25



**Ordering code**

FR -  1.  2.  3.  
 G  R

1. Nominal width	
015	DN 15 - G 1/2
020	DN 20 - G 3/4
025	DN 25 - G 1
2. Process connection	
G	female thread
3. Connection material	
R	red bronze