



49 Cheyne Place

SW3, LONDON



49 CHEYNE PLACE

SW3, London

Cheyne Place is located in the heart of Chelsea, a beautifully low built wide house with exceptional living space spread over three floors.

It comprises a wonderful master bedroom with own dressing room and en-suite bathroom. In addition seven double bedrooms, three en-suite, two further bathrooms, a study, a guest cloakroom, two bright reception rooms and a fully fitted kitchen and dining room.

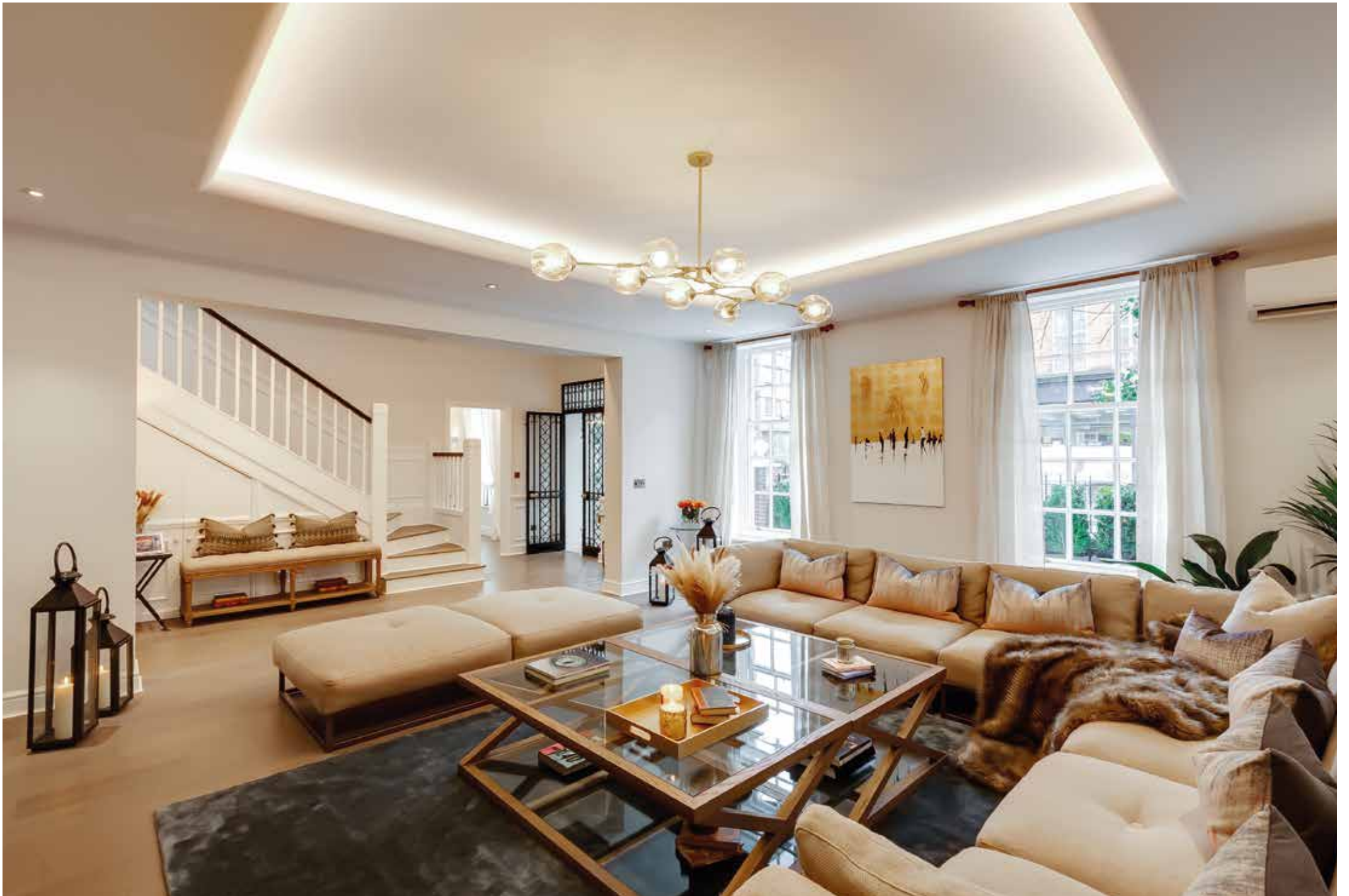
The house is presented in excellent order throughout and benefits from a patio garden, roof terrace and private parking.

The world-famous King's Road up to Sloane Square and fashionable Brompton Road, all with intimate garden squares and designer shops, and the access to beautiful Hyde Park give Chelsea a unique atmosphere in which many people wish to live in. Especially during the spring and summer time the Chelsea Farmers' Market and the annual Chelsea Flower Show exude colour and a special flair around the city.

49 Cheyne Place has exclusive access to the stunning Burton Court Private park. It's within a few minutes walk from the house.

The park contains three tennis courts and a tennis academy. The court also often hosts cricket matches and artistic fairs.

































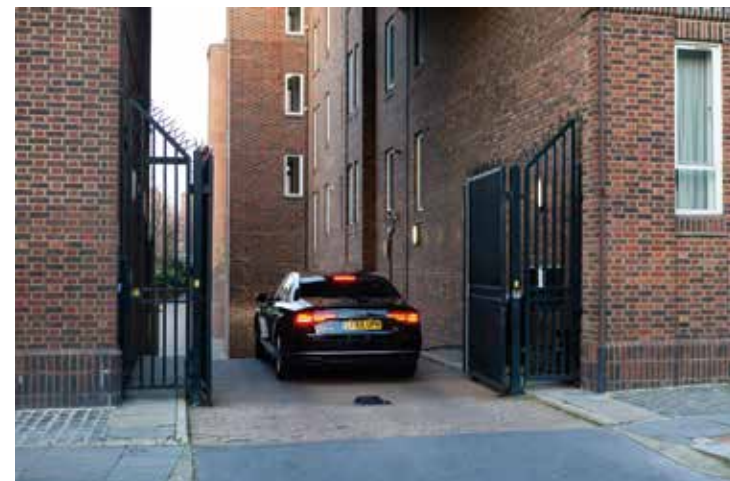
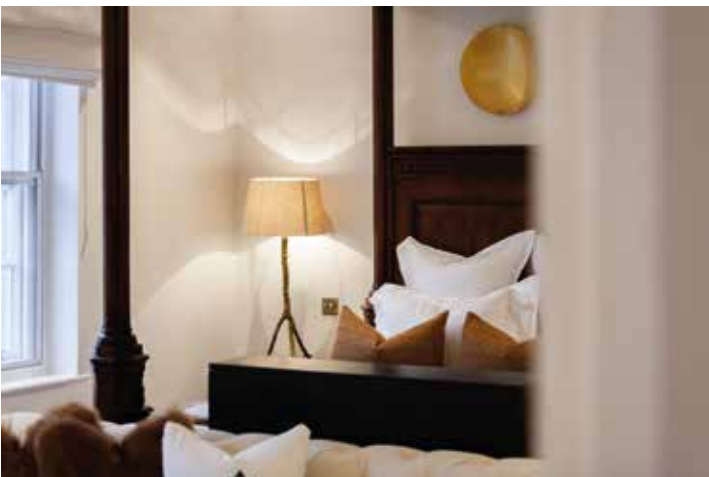
BURTON COURT

Burton Court is private property owned by the Royal Hospital Chelsea, which is used to generate funds for the running costs and maintenance of the Royal Hospital.

At present, the comprehensive pass to Burton Court allows our members access to the following facilities:

- Tennis
- Personal Tennis Coaching
- Children's Tennis Academy
- General Walking
- Dog Walking
- Access to the cricket nets



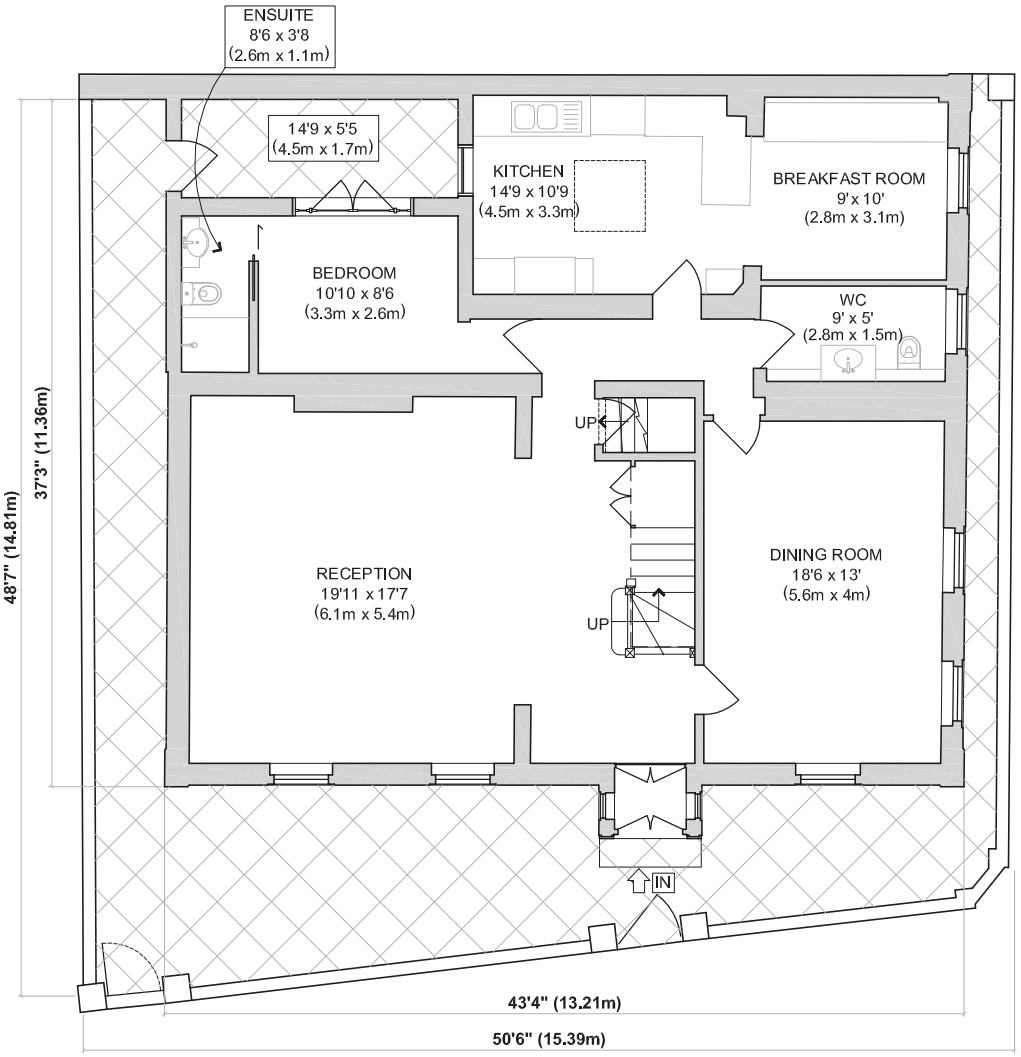


SUMMARY OF ACCOMMODATION

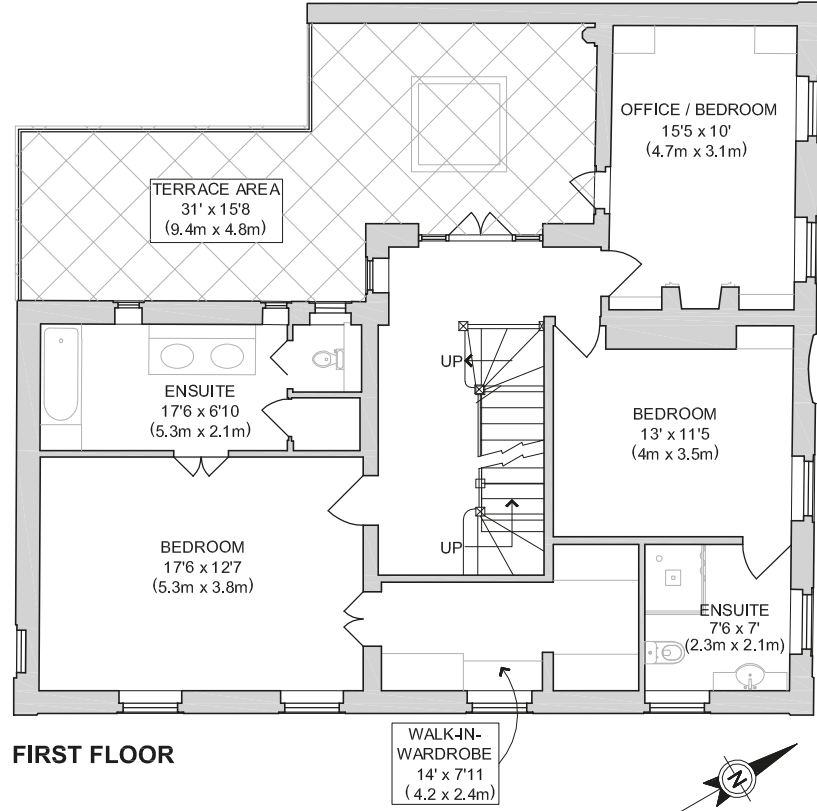
(Frontage over 50' (15.4m) Wide plot)

8 bedrooms | (4 en-suite) | 2 bathrooms | Living room | Dining room | Breakfast room | kitchen | Cloak room
Courtyard | Laundry room | Plant room | First floor large roof terrace | Office / study | Side Courtyard
Front garden area | Private secure parking X 2.

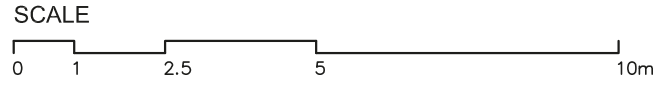
49 Cheyne Place, SW3



GROUND FLOOR



FIRST FLOOR

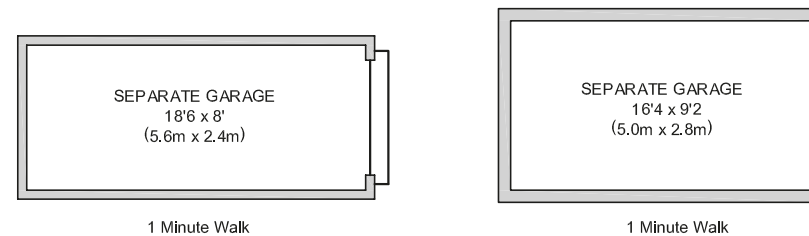
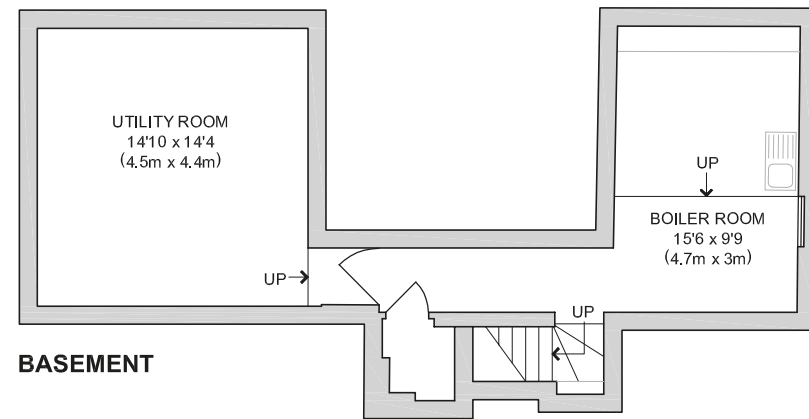
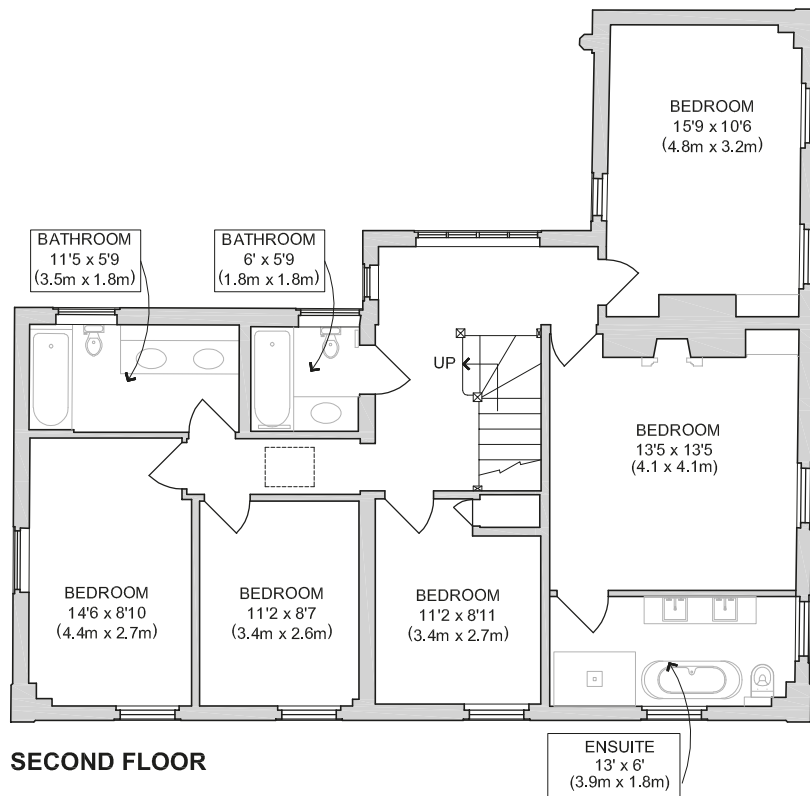


TOTAL (INCLUDING GARAGES): 418 sqm / 4498 sqft

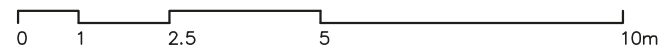
Patio GF: Front/side garden, side courtyard, rear courtyard 65.66 sqm / 707 sqft

Terrace 1st Floor: 30.91 sqm / 333 sqft (TOTAL EXTENDED 97sqm / 1040sqft)

TOTAL INCLUDING GARAGES AND EXTERNAL AREAS: (515 sqm 5538 sqft)



SCALE



All measurements are approximate and are for guidance purposes only